

PENNSYLVANIA

PENNSYLVANIA is not only in the vanguard in the coal industry of the country, but it tops the list of states both from the point of view of production and from that of consumption. It not only dominates the anthracite field to such an overwhelming extent that the scattered deposits in other parts of the country are, generally speaking, unknown except to the coal interests and consumers adjacent to such isolated operations, but it also far outranks the other states of the Union in the output of bituminous coal. To put it graphically, one ton out of every three tons of bituminous coal produced in the United States during the course of the year comes from the coal fields of Pennsylvania, which, while not as large in area as those of certain other important coal producing states, contain some of the best known beds of the country.

The bituminous coal fields of Pennsylvania are estimated to include an area of approximately 14,200 square miles in the western part of the state. Stratigraphically the coal-bearing rocks, all of which belong to the Pennsylvania series and reach a maximum thickness of approximately 2,600 feet in the southwest corner of the state, "lie in the form of canoe-shaped troughs extending northeast and southwest. There are six or more of these troughs and they lie at successively lower levels in going toward the Ohio river from either the east or the west, the whole tending to form a major shallow trough, whose axis runs roughly from Pittsburgh, Penn., to Huntington, W. Va. Around the rim of the major trough occur the outcrops of the lower measures, in the center the lower measures are deeply buried, and the exposed rocks belong to the upper measures."

The lowest of the coal-bearing formations of importance is the Pottsville, which contains, in the western part of the state, the Sharon and Mercer coals, "which have been worked only in restricted areas." Above the Pottsville lie the Allegheny ("Lower Productive Coal Measures") and Monongahela ("Upper Productive Coal Measures") formations. These are among the major fields of the state. Above the Upper Freeport bed of the Allegheny formation lies the Conemaugh or "Lower Barren Measures." This contains six or more beds, "which, however, are workable only in very restricted areas, their best development being found in the Berlin basin in Somerset county." The famous Pittsburgh

seam lies just above the Conemaugh and above the Pittsburgh occur the Redstone, Sewickley, Uniontown and Waynesburg coals.

The Allegheny formation varies in thickness from 250 to 350 feet and contains at least seven horizons of workable coal. From bottom to top these are known as the Brookville, Clarion, Lower Kittanning, Middle Kittanning, Upper Kittanning and Lower Freeport coals. While these beds do not have the continuity that marks certain formations in other states, the United States Geological Survey declares that "it is clear that the corresponding geologic horizons mark times of conditions generally favorable for coal formation and that no coal of wide extent is found at other levels. As a rule the coal beds are not characterized by details of section, roof or floor, by which they can be clearly recognized, except over limited parts of the field."

The Brookville coal is workable in spots over a large part of the marginal belt of the coal measures. It finds its greatest commercial development in Jefferson, Clearfield, Center, Cambria and Somerset counties. While the Clarion coal reaches workable thicknesses in about the same belt, "the two are seldom of workable thickness in the same section." As a general thing both the Brookville and Clarion coals occur in their purest state in the thinner veins. Although the Lower Kittanning seldom exceeds a thickness of four feet, it is considered the "most persistent, uniform and reliable" of the Allegheny formation. It has been found in workable thickness and purity in eleven counties. Except for cannel pockets at various points in the Upper Kittanning, neither that nor the Middle Kittanning are of great commercial importance. The Lower Freeport coal finds its greatest development in the well-known Mosbannon (Clearfield), Reynoldsville-Punxsutawney and Barnesboro-Patton basins in Clearfield, Jefferson, Indiana and Cambria counties. The Upper Freeport is described by the United States Geological Survey as "a variable and complex bed, extending in gross workable thickness over most of its area, although over a considerable part of this territory it is too much broken up and too impure for profitable mining. It appears to be entirely absent in some localities." As a whole about 40 per cent. of the bituminous output of Pennsylvania comes from the Allegheny formation.

The Pittsburgh bed is confined to the southwestern

COAL MEN OF AMERICA

part of the state. Over large areas it has a thickness of nine feet and seldom runs under four. It is considered by the United States Geological Survey as the most uniform in quality and thickness and, for a given area, the most valuable of the Pennsylvania bituminous coal fields. Although its quality does not measure up to some of the other coals of the Allegheny formation to the east and although the Pittsburgh varies in quality from east to west, "on the whole," says the Survey, "the Pittsburgh coal, on account of its thickness, its regularity, its high grade and its adaptability for the production of coke and illuminating gas has long been the most famous bituminous coal bed in America."

The first official record of Pennsylvania bituminous production appears in the United States Census for 1840, when the state was credited with an output of 464,826 tons. While that seems ridiculously small in the light of present Pennsylvania tonnages it nevertheless represented 42.1 per cent. of the total bituminous output reported for that year. The 1840 production, however, both as an actuality and upon a percentage basis gives strong evidence that mining operations were well under way some years before that date. Perhaps no more striking illustration of the magnificent growth of the industry could be found than the statement that the 1916 production of bituminous coal in Pennsylvania alone, representing 33.8 per cent. of the total bituminous output for the year, was more than 150 times the total production of the country in 1840. Except for the Census figures of 1860 (2,690,786 tons) and 1870 (7,798,518 tons) official figures are lacking until 1871. Despite the irregularities in activities in the iron and steel industries, which, both directly and as coke consumers, are among the largest purchasers of Pennsylvania bituminous coal, the growth of the output of the state, as shown in the following tabulation, has been remarkably persistent, steady and sound:

Year.	Ton.	Year.	Ton.
1871.....	9,040,565	1894.....	39,912,463
1872.....	11,695,040	1895.....	50,217,228
1873.....	13,098,829	1896.....	49,557,453
1874.....	12,320,000	1897.....	54,417,974
1875.....	11,760,000	1898.....	65,165,133
1876.....	12,880,000	1899.....	74,150,175
1877.....	14,000,000	1900.....	79,842,326
1878.....	15,120,000	1901.....	82,305,946
1879.....	16,240,000	1902.....	98,574,367
1880.....	18,425,163	1903.....	103,117,178
1881.....	22,400,000	1904.....	97,938,287
1882.....	24,640,000	1905.....	118,413,637
1883.....	26,880,000	1906.....	129,293,206
1884.....	28,000,000	1907.....	150,143,177
1885.....	26,000,000	1908.....	117,179,527
1886.....	27,094,501	1909.....	137,966,791
1887.....	31,516,856	1910.....	150,521,526
1888.....	33,796,727	1911.....	144,561,257
1889.....	36,174,089	1912.....	161,865,488
1890.....	42,302,173	1913.....	173,781,217
1891.....	42,788,490	1914.....	147,983,294
1892.....	46,694,576	1915.....	157,955,137
1893.....	44,070,724	1916.....	170,295,424

Under normal conditions the product of the Pennsylvania bituminous mines is shipped from coast to coast. Distribution is made to nearly 40 states via all-rail routes. Pennsylvania contributes between 33 and 40 per cent. of the total bituminous tonnage moved to the Northwest over the Great Lakes routes. Canada draws upon the Keystone mines for nearly 4,000,000 tons, while tidewater shipments in 1915 totaled close to 14,000,000 tons. Approximately 38 per cent. of the total output of the year just mentioned was used for industrial and domestic purposes within the state itself. This tonnage, 59,993,642 tons, represented 91.53 per cent. of the total bituminous consumption of the state. Of the tonnage named the major part, 32,498,370 tons, was used in making coke at the mines. Shipments of coal to points within the state totaled 21,214,848 tons, while the local trade absorbed 3,231,909 tons. Operations at the mines accounted for the remaining 3,048,515 tons. Railroad consumption totaled 34,175,299 tons, or 21.6 per cent. of the output. Of this tonnage 30,294,892 tons were shipped all-rail, while 3,435,693 tons, used by railroads operating in the Northwest, were included in the lake cargo shipments of 9,619,701 tons. Shipments all-rail to Canada were 3,866,406 tons, while tidewater took 13,960,000 tons.

All-rail shipments to interstate points during 1915 amounted to 40,220,496 tons, or approximately 26 per cent. of the total output. In detail this tonnage was divided as follows:

Used in Pennsylvania:	Tons.
Used at mines for steam and heat.....	3,048,515
Used at mines for making coke.....	32,498,370
Sold to local trade, not shipped.....	3,231,909
Shipped to Pennsylvania points.....	21,214,848
Total used in Pennsylvania.....	59,993,642
Shipped to other States:	
Arkansas	86
California	5,324
Colorado	96
Delaware	951,419
District of Columbia and Maryland.....	1,514,354
Idaho	33
Illinois	1,677,186
Indiana	855,259
Iowa	66,973
Kansas	1,333
Kentucky	131,101
Louisiana	478,011
Michigan	1,948,235
Minnesota	120,244
Mississippi	45,075
Missouri	294,820
Nebraska	24,963
New England	6,587,890
New Jersey	3,489,656
New Mexico	29
New York	14,430,879
North and South Carolina.....	305
North Dakota	380
Ohio	7,197,013
Oklahoma	96

COAL MEN OF AMERICA

Oregon	126
Tennessee	30,613
Texas	239
Virginia	51,064
West Virginia	175,000
Wisconsin	142,694
<hr/>	
Total shipped to other States, all rail.....	40,220,496
Shipped to Great Lakes for cargo.....	*9,619,701
Shipped to tidewater.....	13,960,000
Exported by rail.....	3,866,406
Used by railroads (shipped rail).....	30,294,892
<hr/>	
Total production	157,955,137

*Includes 3,435,693 tons used for railroad fuel in the Northwest.

The total quantity used for railroad fuel was 34,175,299 tons, or 21.6 per cent of the total production.

The great steel industry of the state and the many other industrial enterprises which have located within its borders primarily because of the accessibility of the bituminous coal deposits operate to give Pennsylvania the largest square mile consumption of any state in the Union. In 1915 this was 1,968 tons, or 16 times the average for the country as a whole. Upon a per capita basis the influence of anthracite naturally plays a large part. The per capita consumption of anthracite, 2.78 tons, is two tons greater than the average for the country as a whole and is exceeded only by that of the state of New Jersey. Its per capita bituminous consumption figure, 1.67 tons, is, however, below the country average, 2.04 tons, notwithstanding the fact that Pennsylvania as a whole consumes more bituminous coal than any other state in the Union. Its combined per capita consumption of bituminous and anthracite, 4.45 tons, shows up well in comparison with the country average of 2.82 tons.

As indicated in a preceding paragraph Pennsylvania looks to its own mines for the major share of the bituminous coal consumed within the state. In 1915 out of a total bituminous consumption of 65,540,997 tons, state mines furnished 59,993,642 tons. West Virginia came next with shipments of 4,945,295 tons. Third honors went to Maryland, which shipped 505,860 tons. Including Kentucky coal exported through Pennsylvania to Canada the Blue Grass shipments to the Keystone state totaled 79,125 tons. Ohio, the only other state to ship to Pennsylvania, contributed 17,075 tons. Anthracite consumption reached 23,292,584 tons, or 26.17 per cent. of the total anthracite production of the state.

Anthracite and Pennsylvania are

Anthracite. synonymous in coal trade history; so much so in fact that, in speaking of the anthracite industry, unless special qualification is made, reference is solely to the Pennsylvania fields, the far western deposits being so limited in production that

they are not generally taken into account in anthracite production statistics. The Pennsylvania anthracite fields underlie about 480 square miles in Susquehanna, Lackawanna, Luzerne, Carbon, Schuylkill, Columbia, Northumberland, Dauphin and Sullivan counties. With the exception of the Sullivan county (Bernice field) deposits the exact classifications of which has been a bone of contention, the anthracite fields have been divided into three trade regions and classified into four basins.

The Wyoming trade region covers the Northern basin in Lackawanna, Susquehanna, Wayne and Luzerne counties and includes the Carbondale, Scranton, Pittston, Wilkes-Barre, Plymouth and Kingston districts. The Lehigh region, or Eastern Middle basin, lies in Luzerne, Carbon and Schuylkill counties, and includes the Green Mountain, Black Creek, Hazelton, Beaver Meadow and Panther Creek districts. The Southern and Western Middle basins are in the Schuylkill region of Schuylkill, Columbia, Dauphin and Northumberland counties and include the East Schuylkill, Western Schuylkill, Lorberrry and Lykens Valley districts in the Southern basin and the East Mahoney, West Mahoney and Shamokin districts in the Western Middle basin.

Early experiments in the use of anthracite began prior to the Revolutionary war. Obadiah Gore, a blacksmith, by the use of his bellows succeeded where others had failed in the burning of the "black stones" of the Wyoming Valley. In 1807 a shipment of 55 tons was made to Columbia and a few years later 22 tons were sent from Carbondale to Philadelphia. The first recorded use in ordinary open grates was in 1808. Statistics, as compiled by the Bureau of Anthracite Coal Statistics, date back to 1820, when 365 gross tons were mined from the Lehigh region. Two years later production was reported from the Schuylkill region, while the Wyoming region, which has furnished over 50 per cent. of the total shipments, did not enter the ranks until 1829. The Bureau figures, which are exclusive of coal sold locally or used at the mines and do not include movement from the Bernice field, show the following:

Year.	Gross Tons			Total.
	Schuylkill.	Lehigh.	Wyoming.	
1807.....	55	55
1820.....	365	365
1821.....	1,073	1,073
1822.....	1,480	2,240	3,720
1823.....	1,128	5,823	6,951
1824.....	1,567	9,541	11,108
1825.....	6,500	28,393	34,893
1826.....	16,767	31,280	48,047
1827.....	31,360	32,074	63,434
1828.....	47,284	30,232	77,516
1829.....	79,973	25,110	7,000	112,083
1830.....	89,984	41,750	43,000	174,734
1831.....	81,854	40,966	54,000	176,820
1832.....	209,271	70,000	84,000	363,271
1833.....	252,971	123,001	111,777	487,749

COAL MEN OF AMERICA

1834.....	226,692	106,244	43,700	376,636	1902.....	8,471,391	3,470,736	19,258,763	31,200,890
1835.....	339,508	131,250	90,000	560,758	1903.....	16,474,790	7,164,783	35,723,258	59,362,831
1836.....	432,045	148,211	103,861	684,117	1904.....	16,379,293	7,107,220	34,006,009	57,492,522
1837.....	530,152	223,902	115,387	869,441	1905.....	17,703,099	7,849,205	35,857,897	61,410,201
1838.....	446,875	213,615	78,207	738,697	1906.....	16,011,285	7,046,617	32,640,693	55,698,595
1839.....	475,077	221,025	122,300	818,402	1907.....	20,141,288	8,320,653	38,638,452	67,109,393
1840.....	490,596	225,313	148,470	864,379	1908.....	18,006,464	7,786,255	38,872,295	64,665,014
1841.....	624,466	143,037	192,270	959,773	1909.....	16,864,147	7,532,271	37,573,467	61,969,885
1842.....	583,273	272,540	252,599	1,108,412	1910.....	17,845,020	8,627,539	38,433,227	64,905,786
1843.....	710,200	267,793	285,605	1,263,598	1911.....	19,375,369	9,775,018	40,803,912	69,954,299
1844.....	887,937	377,002	365,911	1,630,850	1912.....	18,013,406	8,571,861	37,025,311	63,610,578
1845.....	1,131,724	429,453	451,836	2,013,013	1913.....	19,338,870	9,347,583	40,388,175	69,069,628
1846.....	1,308,500	517,116	518,389	2,344,005	1914.....	18,416,586	10,272,308	41,258,463	69,947,357
1847.....	1,665,735	633,507	583,067	2,882,309	1915.....	18,043,709	10,190,421	39,945,344	68,179,474
1848.....	1,733,721	670,321	685,196	3,089,238	1916.....	19,677,476	9,437,545	37,945,334	67,060,355
1849.....	1,728,500	781,556	732,910	3,242,966					
1850.....	1,840,620	690,456	827,823	3,358,899					
1851.....	2,328,525	964,224	1,156,167	4,448,916					
1852.....	2,636,835	1,072,136	1,284,500	4,993,471					
1853.....	2,665,110	1,054,309	1,475,732	5,195,151					
1854.....	3,191,670	1,207,186	1,603,478	6,002,334					
1855.....	3,552,943	1,284,113	1,771,511	6,608,567					
1856.....	3,603,029	1,351,970	1,972,581	6,927,580					
1857.....	3,373,797	1,318,541	1,952,603	6,644,941					
1858.....	3,273,245	1,380,030	2,186,094	6,839,369					
1859.....	3,448,708	1,628,311	2,731,236	7,808,255					
1860.....	3,749,632	1,821,674	2,941,817	8,513,123					
1861.....	3,160,747	1,738,377	3,055,140	7,954,264					
1862.....	3,372,583	1,351,054	3,145,770	7,869,407					
1863.....	3,911,683	1,894,713	3,759,610	9,566,006					
1864.....	4,161,970	2,054,669	3,960,836	10,177,475					
1865.....	4,356,959	2,040,913	3,254,519	9,652,391					
1866.....	5,787,902	2,179,364	4,736,616	12,703,882					
1867.....	5,161,671	2,502,054	5,325,000	12,988,725					
1868.....	5,330,737	2,502,582	5,968,146	13,801,465					
1869.....	5,775,138	1,949,673	6,141,369	13,866,180					
1870.....	4,968,157	3,239,374	7,974,660	16,182,191					
1871.....	6,552,772	2,235,707	6,911,242	15,699,721					
1872.....	6,694,890	3,873,339	9,101,549	19,699,778					
1873.....	7,212,601	3,705,596	10,309,755	21,227,952					
1874.....	6,866,877	3,773,836	9,504,408	20,145,121					
1875.....	6,281,712	2,834,605	10,596,155	19,712,472					
1876.....	6,221,934	3,854,919	8,424,158	18,501,011					
1877.....	8,195,042	4,332,760	8,300,377	20,828,179					
1878.....	6,282,226	3,237,449	8,085,587	17,605,262					
1879.....	8,960,829	4,595,567	12,586,293	26,142,689					
1880.....	7,554,742	4,463,221	11,419,279	23,437,242					
1881.....	9,253,958	5,294,676	13,951,383	28,500,017					
1882.....	9,459,288	5,689,437	13,971,371	29,120,096					
1883.....	10,074,726	6,113,809	15,604,492	31,793,027					
1884.....	9,478,314	5,562,226	15,677,753	30,718,293					
1885.....	9,488,426	5,898,634	16,236,470	31,623,530					
1886.....	9,381,407	5,723,129	17,031,826	32,136,362					
1887.....	10,609,028	4,347,061	19,684,929	34,641,018					
1888.....	10,654,116	5,639,236	21,852,366	38,145,718					
1889.....	10,486,185	6,294,073	19,036,835	35,817,093					
1890.....	10,867,822	6,329,658	19,417,979	36,615,459					
1891.....	12,741,258	6,381,838	21,325,240	40,448,336					
1892.....	12,626,784	6,451,076	22,815,480	41,893,340					
1893.....	12,357,444	6,892,352	23,839,741	43,089,537					
1894.....	12,035,005	6,705,434	22,650,761	41,391,200					
1895.....	14,269,932	7,298,124	24,943,421	46,511,477					
1896.....	13,097,571	6,490,441	23,589,473	43,177,485					
1897.....	12,181,061	6,249,540	23,207,263	41,637,864					
1898.....	12,078,875	6,253,109	23,567,767	41,899,751					
1899.....	14,199,009	6,887,909	26,578,286	47,665,204					
1900.....	13,502,732	6,918,627	24,686,125	45,107,484					
1901.....	16,019,591	7,211,974	30,337,036	53,568,601					

Speaking of anthracite preparation and distribution the United States Geological Survey says:

"Anthracite is shipped to nearly every state in the Union and to many foreign countries. The major portion is consumed in the territory near Pennsylvania, including Canada. In the larger eastern cities its use has become a necessity, but farther west and south anthracite is more of a luxury than a necessity and in the states most remote from the East the quantity consumed is small. The output of the anthracite mines is carefully crushed, cleaned and divided into sizes by a process and at a cost that render it little less than a manufactured product. There are ten of these sizes, each with its price and special use. Two major divisions are recognized, however, the prepared or domestic sizes, including broken, egg, stove and chestnut, which range from four inches down to three-fourths of an inch and the steam coal, including pea, buckwheat, buckwheat No. 2 (rice) and buckwheat No. 3 (barley), which range from three-fourths of an inch to one-sixteenth of an inch. The domestic sizes are in greatest demand and consequently bring the highest price. Attention in preparation is therefore directed to obtaining the largest possible proportion of those sizes and the finer coal resulting from the crushing is a by-product. It is not possible, however, to increase the proportion of domestic sizes beyond 60 to 65 per cent. of the coal shipped, or 50 to 55 per cent. of the total product."

Although the foregoing quotation is an accurate reflection of anthracite conditions as they have existed for a number of years past the Survey itself recognizes that certain changes have been taking place with respect to the relative importance and uses of the larger junior sizes. For example pea has come into much wider favor as a domestic fuel and has gained the sobriquet in large eastern cities of "the poor man's anthracite." No. 1 buckwheat has also been making headway in certain classes of strictly domestic trade, while the smaller sizes enter into active competition with bituminous coals in the hotel, large apartment and office building trade in the East. With the exception of No. 1 buckwheat, which is frequently prepared at the yards or docks, sizes smaller than pea are not shipped as a rule to the

COAL MEN OF AMERICA

West, as there is no market for them, but the yard screenings and dust are in high favor with zinc plants and malt houses.

Incomplete data gathered by the United States Geological Survey indicate that in 1915 not less than 50,000,000 net tons of anthracite was used in heating households, apartments, hotels, offices, schools and other buildings, while the bituminous coal consumption for domestic and small steam trade totaled only 71,000,000 tons. Although 74.4 per cent. of the anthracite shipments for the year went to the New England and Middle Atlantic states, tonnage distributed to other states covered a wide area, the figures showing that only four states—Arizona, Nevada, New Mexico and Utah—failed to call upon the Pennsylvania anthracite mines for a portion of their fuel supply.

In detail the distribution figures for the year named showed the following:

	Net Tons	
	Shipped by way of Great Lakes.	Shipped by rail only. Total.
Middle Atlantic States:		
Pennsylvania—		
Used at mines for steam and heat.....		9,996,544
Sold to local trade, not shipped		2,092,086
Shipped to Pennsylvania points	11,203,954	11,203,954
		23,292,584
New York	20,789,494	20,789,494
New Jersey	8,375,000	8,375,000
	40,368,448	52,457,078
*New England States.....	8,267,000	13,767,000
South Atlantic and Southern States:		
Alabama	8,100	8,100
Arkansas	800	800
Delaware	210,000	210,000
District of Columbia and Maryland		
Florida	1,470,000	1,470,000
Georgia	25,000	25,000
Kentucky	50,000	50,000
Kentucky	20,000	20,000
Louisiana	15,000	15,000
Mississippi	2,000	2,000
North and So. Carolina	124,000	124,000
Oklahoma	500	500
Tennessee	9,000	9,000
Texas	22,000	22,000
Virginia	170,000	170,000
West Virginia	35,000	35,000
	2,161,400	2,161,400
North Central States:		
Illinois	807,000	2,485,000
Indiana	600,000	600,000
Iowa	310,000	310,000
Kansas	25,000	25,000
Michigan	45,000	793,800

Minnesota	1,600,000	70,000	1,670,000
Missouri		371,300	371,300
Nebraska	30,000	497,300	527,300
North Dakota	310,000	50,000	360,000
Ohio		600,000	600,000
South Dakota	150,000	30,000	180,000
Wisconsin	1,680,000	50,000	1,730,000

4,622,000	5,882,400	10,504,400
Western States:		
California	500	500
Colorado	600	600
Idaho	200	200
Montana	5,000	5,000
Oregon	200	200
Washington	1,900	1,900
Wyoming	200	200
	8,600	8,600

Total distributed in United States for purposes other than railroad fuel.....	78,898,478
Used for railroad fuel.....	6,200,000

Total distributed in U. S.....	85,098,894
Exported to Canada.....	3,852,894
Exported to other countries.....	112,361

Total exported	3,965,255
Total distribution, 1915.....	89,063,733
Total production, 1915.....	88,995,061

*Included in New England's final total is 5,500,000 net tons shipped by way of tidewater, the only group of states receiving coal in that way.

Although the figures given have been used in the summarization of the fuel consumption in various states appearing elsewhere in this volume the statistics actually represent distribution. This distinction, especially in regard to anthracite, is important because of the large storage piles accumulated in times past. Thus during the year under review the anthracite interests reported that storage stocks had been increased from 5,000,000 to 10,000,000 gross tons. The result is that the figures for certain states, particularly New York, New Jersey, Pennsylvania, and the New England group, represent receipts rather than consumption. Likewise it is possible, even probable, that coal consigned to storage plants in certain states may have been subsequently re-shipped to other states. Considered in relation to the total tonnages, however, the variations produced by the two factors mentioned are too small to seriously affect the substantial accuracy and comparative value of the statistics given.

Review of the coal industry of Pennsylvania would be lacking if no mention were made of trade features at Philadelphia and Pittsburgh. While accurate figures upon the bituminous consumption at the first-named city are not available the anthracite consumption for 1915 was 4,476,002 net tons, or 1,184,002 tons more than was burned within the entire state of Illinois. Figured in another way Philadelphia consumed more than double the amount of anthracite used in the city

COAL MEN OF AMERICA

of Chicago. Philadelphia also takes high rank as a clearing port for water shipments of bituminous coal. During the year nearly 8,400,000 tons were loaded in the vessels at the port. More than 75 per cent. of this tonnage was carried to coastwise or Delaware Bay points. Anthracite shipments from the port aggregated 2,502,602 net tons; of this, 2,406,756 tons went to coastwise, principally New England, points and 95,846 tons were exported.

Pittsburgh shares with Chicago the honor of being

the largest coal consuming market in the country. In 1915 its consumption was placed at 17,144,015 tons. The district received 7,190,952 tons by rail and 9,953,063 tons via the Monongahela river locks. In addition to the consumption within the Pittsburgh district itself 22,658,596 tons moved by rail and 2,351,255 tons by water through Pittsburgh to points west and 13,376,616 tons by rail to points east. In other words the movement to and through Pittsburgh, rail and water, for the year totaled 55,530,482 tons.

COAL MEN OF AMERICA



HOWARD W. PERRIN, Philadelphia, Pennsylvania, Manager Anthracite Sales M. A. Hanna & Co., was born in Wyoming County, Pennsylvania, September 4, 1867, and has been in the coal business twenty-six years. He was formerly with Williams & Peters, James Boyd & Co. and Susquehanna Coal Co. He has served as President of the Coal Club of Philadelphia, President of the United States Golf Association, and has been identified prominently with many business interests.

COAL MEN OF AMERICA



SAMUEL DEXTER WARRINER, Philadelphia.

Samuel Dexter Warriner, Philadelphia, Pennsylvania, President of the Lehigh Coal & Navigation Company, the oldest of the anthracite mining companies, is one of the younger generation who is taking a prominent leadership in the anthracite branch of the coal industry. Coming up through the operating department he has acquired a thorough knowledge of the practical problems in connection with the production of coal as well as showing a happy faculty for the wise handling of labor and general executive ability.

Mr. Warriner was born February 24, 1867, in Lancaster, Pennsylvania. He was graduated from Amherst College in 1888 with the degree of A. B. and from Lehigh University in 1890 as Mining Engineer with degrees of B. S. and E. M.

He took service with the Liberty Iron Company as Engineer in 1890, then with the Lehigh Valley Coal Company as Assistant Superintendent and Mechanical Engineer 1890-1897. General Superintendent of the Calumet and Hecla Mining Company from 1897 to 1901. General Superintendent, General Manager and Vice President of the Lehigh Valley Coal Company from 1901 to 1912.

On July 1, 1912, he was made President of the Lehigh Coal & Navigation Company and has been a leading member of the Committee of Anthracite Operators in the wage conference with representatives of the United Mine Workers of America.

Mr. Warriner was appointed in 1903 as a member of the Anthracite Conciliation Board and has served continuously since then. In 1909 he was elected Trustee of Lehigh University, which position he still holds.

THE LEHIGH COAL & NAVIGATION COMPANY

437 Chestnut Street, Philadelphia, Pa.

A CENTURY OF "OLD COMPANY'S LEHIGH"

Considering the extent of its property, the quality of its product, the thoroughness of its mining methods and the policies adopted to conserve the supply still underground, The Lehigh Coal & Navigation Co. today occupies a unique and interesting place in the history of anthracite production in Northeastern Pennsylvania. The early history of the company, the efforts of its pioneers to make and reach a market for the wealth of fuel which they knew to be of so high a value to civilization, reads like a romance. And it is paralleled in interest by the record of the broad economic policy of the company's management in recent years.

The mines of The Lehigh Coal & Navigation Co. extend on either side of the Panther Creek in Carbon and Northeastern Schuylkill counties, Pennsylvania. At its upper end this anthracite territory approaches the Lehigh River; to which fact is attributable, doubtless, its opening during the earliest period of anthracite development.

Discovery of coal in this region is generally accredited to Phillip Ginter, a backwoodsman, who later in the 18th century, settled near Mauch Chunk. Ginter's story is that one day in the year 1791, as he was returning after a day spent in the quest of game, he stumbled over what seemed to him to be a stone.

He had heard of "stone coal over in Wyoming," and was impressed with the idea that this "black stone" might have fuel value. He took it with him to his cabin, and the next day carried it to Col. Jacob Weiss, who lived at what was then known as Fort Allen. Keenly alive to the value of Ginter's find, should it prove to be coal, Colonel Weiss took the specimen to Philadelphia and submitted it to John Nicholson and Michael Hillegas.

Ascertaining by examination that this was the purest of anthracite, Hillegas, Weiss and Cist formed the Lehigh Coal Mine Co. in 1792, and took up 8,000 to 10,000 acres of unlocated land, including the Mauch Chunk Mountain.

This was the beginning of the "Old Company," and from that day to the present the coal which has come from these mines—Old Company's Lehigh—has been justly famed because of its purity and its high fuel and energy value.

Owing to the difficulties of transporting the coal to any considerable settlement, the mines remained neglected until the year 1806. In that year, William Turnbull constructed an "ark"—a rough timber boat—to convey two or three hundred bushels of anthracite to Philadelphia. Some of this was sold to the manager of the Philadelphia Water Works for use in the power-plant, which then stood on the site of the present City Hall. But because of inexperience in handling anthracite, this fuel "seemed to extinguish the fire," and it was rejected as worthless.

The mines still languished until after the War of 1812, and it was not until Josiah White, Erskine Hazard and G. F. A. Hauto interested themselves in Lehigh lands, that the true development of the region began.

It was mainly the rare business sagacity and engineering skill of Mr. White that overcame the tremendous difficulties of the Lehigh Navigation, and that found the path by which the product of the mines could be brought to market.

In 1818, these three anthracite pioneers obtained control of the lands of the Lehigh Coal Mine Co. In the same year, they were granted, by act of legislature, the right to improve the navigation of the Lehigh River.

It is a rather interesting fact that the famous "bear trap" dam, now adopted by United States Government engineers for improvement of the Ohio River, was invented by Josiah White in the early work of Lehigh improvement. As is well known, the "bear trap" is hinged at the bottom and is lowered to permit the passage of navigation, being raised, when desired, by the force of the water itself. Mr. White had dams of this type built in secret and met the questions of the curious with the answer that he was building a "bear trap." French engineers afterwards condemned the dam as valueless; yet today enormous "bear traps" are being built by the government on the Ohio to pass the tremendous fleets that carry the tonnage of the Pittsburgh district.

When, by the raising of these "bear traps" on the Lehigh, the dam became full, and the water had run over it long enough for the river below the dam to acquire the depth of the ordinary flow of the river, the sluice-gates were let down, and the boats, which were lying in the pools above, passed down with the artificial flood. About twelve of these dams and sluices were made in 1819.

In these early days the coal was brought to market in what were termed "arks"—square timber boxes from sixteen to eighteen feet wide and from twenty to twenty-five feet long. These boats made but one trip. When they

reached Philadelphia, and had been unloaded, they were broken up and the timber sold, the spikes, hinges and other hardware being returned to Mauch Chunk, a distance of eighty miles, by wagon. For two or three years the hands employed on these rude boats made the return trip to the mines afoot. Later, rough wagons were placed on the road by tavern-keepers, to carry them at low prices. Boats of this sort were used until the end of the year 1831, when the Delaware Division of the Pennsylvania Canal was partly finished. In the last year of this period 40,966 tons were thus floated down, requiring so many boats that, if placed in one line, they would have extended more than thirteen miles.

The interests of the two Lehigh companies were amalgamated April 21, 1820, under the name Lehigh Navigation & Coal Co. and with this date began, the actual development of this rich property along broad lines. By an act of Assembly passed Feb. 13, 1822, The Lehigh Coal & Navigation Co. was incorporated, and the property of the prior associations, and the privileges created by the act of 1818, were vested in the new company.

The canal between Mauch Chunk and the Delaware as it now exists was begun in 1827. A large part of the company's product is still carried to market on this water route. The canal has seventy-five locks—fifty on the Lehigh division and twenty-five on the Delaware division. The entire route is 106 miles. The traffic is lowered from a maximum elevation of 531 feet above tide level.

Today, when anthracite is regarded as a necessity throughout the most populous section of the United States, it is interesting to recall this early period when the anthracite pioneers were compelled to fight their way to market and then to educate that market in the use of their product. As late as 1825 The Lehigh Coal & Navigation Co. found it advisable to print in pamphlet form a series of testimonials to the effect that anthracite could be burned, and that it was really a valuable fuel.

Today its market is bounded only within the territory which it can reach and supply. And among all of the anthracite mined, "Old Company's Lehigh" is recognized as pre-eminent for purity and high fuel value.

THE LEHIGH COAL & NAVIGATION CO. PROPERTY OF TODAY.

The superiority and economy of "Old Company's Lehigh" is owing to its high percentage of fixed carbon. As is well known, the heat efficiency of coal depends upon the fixed carbon it contains. "Old Company's Lehigh" contains from 4 to 6 per cent more than is found in other anthracite. It contains 14,000 B.T.U. and when burned leaves a residue of but 12 per cent of ash. It is because of the density and hardness of "Old Company's Lehigh" that the percentage of refuse is so low. Unlike a free-burning coal, it does not split up under the action of heat; and as it contains less sulphur and iron, it does not clinker as do other anthracites.

Of this purest of all anthracite, The Lehigh Coal & Navigation Co. has more than 500,000,000 tons still under the ground. The company owns in fee anthracite coal lands in Carbon and Schuylkill counties, Pennsylvania, comprising 8,631 acres. Upon this property are located well-equipped and modern collieries, with a productive capacity in excess of 4,000,000 tons per annum. The property includes the Nesquehoning, Lansford, Coaldale, Greenwood, Rahn and Tamaqua Collieries; Coaldale, Greenwood and Hauto Washeries. The company employs in these approximately 10,000 men.

The company owns the Lehigh and New England Railroad, the main line of which extends from Hauto, Pennsylvania, to Campbell Hall, New York, a distance of 126 miles, with principal branches to Palmerton, Slatington, Catasauqua, Bethlehem, Martins Creek, Bangor, Pennsylvania, and Sussex, New Jersey. The total main track mileage operated is 297.11, sidings and yards 84.10; total mileage owned, including sidings and yards, 283.87. This railroad connects with all the important trunk lines in the East, and is able to reach and distribute anthracite, cement, slate and other commodities originating on its line over a wide area.

The company also has a large holding in the stock of the Lehigh & Hudson River Railway Co., whose line extends from Easton, Pennsylvania, to Maybrook, New York.

The company owns and operates the Lehigh Canal, extending from Coalport, above Mauch Chunk, to Easton, a distance of 46 miles, and leases and operates the Delaware Division Canal, extending from Easton to Bristol, a distance of 60 miles.

COAL MEN OF AMERICA



JOHN J. TIERNEY, Philadelphia, Pennsylvania, Vice President and General Sales Manager Crozier-Pocahontas Co., Philadelphia, was born in Newcastle, Pennsylvania, and has been in the coal business forty-six years, his first work being with the Philadelphia & Reading Coal & Iron Co. For several years he was President of the Smokeless Coal Operators' Association of West Virginia, and is now Treasurer of the National Coal Association. Mr. Tierney is President of the Powhatan Coal & Coke Co., Sharon Coal & Coke Co. and Tierney Coal Co., Vice President of the Page Coal & Coke Co. and Tierney Mining Co., and sole owner of the J. J. Tierney Coke Agency of Bluefield, West Virginia. Since 1881 he has been a member of the American Institute of Mining Engineers and is a member of the Engineers' Club and the Manufacturers' Club of Philadelphia.

COAL MEN OF AMERICA



DANIEL B. WENTZ, Philadelphia, Pennsylvania, President Royal Colliery Co., Midvalley Coal Co., Stonega Coke & Coal Co., Virginia Coal & Iron Co. and Wentz Corp., was born in Jeddo, Pennsylvania, September 4, 1872, and has been in the coal business twenty-two years. He is also interested in the Maryd Coal Co., Upper Lehigh Coal Co. and J. S. Wentz Co. He is a member of the various coal associations of Pennsylvania, is well known throughout the trade, and has taken a prominent part in war work.

COAL MEN OF AMERICA



WILLARD HALL BRADFORD, Philadelphia, Pennsylvania, President W. H. Bradford & Co., Inc., Commercial Trust Building, Philadelphia, Pennsylvania, was born in Dover, Delaware, May 11, 1868, and has been in the coal business for twenty-six years. He is also interested in the Victor Coal Mining Co. and Clarion Coal Mining Co., and was formerly with the Altoona Coal & Coke Co., Columbia Coal Mining Co., and Spring Coal Mining Co. He is well known in eastern coal circles.



H. R. REUTLINGER, Philadelphia, Pennsylvania, Vice President W. H. Bradford & Co., was born in Cincinnati, Ohio, September 15, 1888, and has been in the coal business nine years. He is President of the Clarion Coal Mining Co. and Secretary and Treasurer Victor Coal Mining Co. He was formerly with the Davis Colliery Co., Elkins, West Virginia.



RAYMOND HAVEMEYER, New York City, Treasurer W. H. Bradford & Co., was born at East Orange, New Jersey, June 23, 1884, and has been interested in the coal business four years. He is also a Director of the Victor Coal Mining Co. and the Clarion Coal Mining Co. Mr. Havemeyer was formerly connected with the Phoenix Fuel Co.



LLOYD G. McCRUM, Somerset, Pennsylvania, General Manager W. H. Bradford & Co., Philadelphia, President Victor Coal Mining Co. and Vice President and General Manager Clarion Coal Mining Co., was born in Uniontown, Pennsylvania, August 7, 1877, and has been in the coal business for six years. He is a Lieutenant Colonel in the service.

WESTON DODSON & Co.,
INCORPORATED,
Bethlehem, Pennsylvania.

One of the old established and highly regarded anthracite producing companies is that of Weston Dodson & Co., Inc., of Bethlehem, Pennsylvania.

This business was born in the days of the Civil War and early in its history was in the hands of three brothers, of whom Weston Dodson was the senior and salesman. For the sixty years since it so established the spirit, which this generation inherited from the previous generation that it has been one of their most valued assets.

There are today among the firm's customers, concerns whose presidents were office boys half a century ago and some of these concerns for fifty years have bought from Weston Dodson & Co. because in the truest word the previous generation were gentlemen and salesmen and who made it their business "to live by the side of the road and be a friend to man."

The past year was one of sadness for those connected with the company because it marked the passing of the last of the three brothers who founded the business, and yet the unfailing kindness and courtesy of the late Charles M. Dodson sets a standard for his successors to emulate.

The business has grown as the firm has been true to principle and during the recent war nineteen of their young men, one of them a grandson of the founder, were wearing the khaki in nine different branches of the military service. The sales organization has been built up from young college men whose loyalty and devotion have been a very help in troublesome times. Loyalty to the house, of which they are all a part, is what they strive for.

The history of the house is the history of an idea rather than of any individual. With every employe interested in every transaction and every customer admitted to a front plane of equality in service the organization has gained not like a mushroom but like the proverbial sturdy oak. Troublous times have not brought the big opportunities which have made many people wealthy over night and yet the growth of the idea has brought with it a satisfaction in no sense fleeting.

The annual meeting of the sales employes brings upwards of eighty persons to the main office in Bethlehem from offices in six cities all over the land and each one comes imbued with the idea that if in these troublous times one must be engaged in coal it is well to be part of the company to which they all owe allegiance.

With the backing of employes, customers and miners they are looking confidently to the future and voice this confidence in two mottoes emblazoned on their coat of arms: "Our customers are always right." and "We do co-operate."

COAL MEN OF AMERICA



EMMETT R. TATNALL, Haverford, Pennsylvania, President Franklin Coal & Coke Co., Treasurer Franklin Fuel Co. and Vice President Preston County Power Co., Philadelphia, Pennsylvania, was born in Philadelphia September 6, 1884, and has been in the coal business six years. He was previously with the Keystone Coal & Coke Co.



HOLLIE W. BISHOP, Philadelphia, Pennsylvania, Vice President and Testing Engineer Franklin Coal & Coke Co., Commercial Trust Building, Philadelphia, Pennsylvania, was born in Roxano, Delaware, February 20, 1872, and has been in the coal business for nine years. He was formerly with the Keystone Coal & Coke Co.



CHESTER H. DUNGAN, New York City, Vice President Franklin Coal & Coke Co., was born in Philadelphia, Pennsylvania, in April, 1882, and has been interested in the coal business eighteen years. Mr. Dungan was formerly with the Clearfield Bituminous Coal Corp., Empire Coal Mining Co. and Keystone Coal & Coke Corp. as New York Manager.



GEORGE H. HECK, Philadelphia, Pennsylvania, Secretary-Treasurer of the Franklin Coal & Coke Co., Commercial Trust Building, Philadelphia, Pennsylvania, was born in Philadelphia July 4, 1889, and has been in the coal business twelve years. He is also President of the Franklin Fuel Co., Secretary Preston County Power Co., and Treasurer Schuylkill Coal Co. and was formerly with the Keystone Coal & Coke Co.

COAL MEN OF AMERICA



HENRY H. LINEAWEAVER, Philadelphia, Pennsylvania, President of H. H. Lineaweaver & Co., was born in Millers-town, Pennsylvania, December 22, 1872, and has been in the coal business twenty-three years. He is also President of H. H. Smith & Co. and the Shipman Coal Co. He was formerly with Nutting & Lineaweaver, Henry H. Lineaweaver and Smith, Lineaweaver & Co. He has many friends in the coal trade and is highly respected.



HARRY C. HEURY, Philadelphia, Pennsylvania, Treasurer H. H. Lineaweaver & Co., Inc., Philadelphia, Pennsylvania, was born in Lieweliyn, Pennsylvania, September 8, 1868, and has been in the coal business for twenty-six years. He is also interested in the Big Branch Coal Co., Girard Mammoth Coal Co., Algoma Coal & Coke Co., and Quinimont Coal Co.



JOHN E. SHEETS, Philadelphia, Pennsylvania, Secretary H. H. Lineaweaver & Co., was born in Washington, District of Columbia, December 24, 1869, and has been in the coal business twenty-nine years. He is also Secretary of H. H. Smith & Co. and of the Lebanon Stone Co. He was formerly with the Coal Traffic Department of the Philadelphia & Reading Railroad Co., Geo. B. Newton & Co., and Madelra, Hill & Co.



CHARLES ERNEST WILCOX, Philadelphia, Pennsylvania, A Director and Assistant to the President H. H. Lineaweaver & Co., was born in Baltimore, Maryland, October 26, 1878, and has been in the coal business fourteen years, and is a man well known throughout the coal industry of the country.

Madeira, Hill & Company North American Building Philadelphia, Pennsylvania

The headquarters of the Company is in Philadelphia, with other offices in New York (143 Liberty Street), Hartford, Connecticut, Frackville, Pennsylvania, Philipsburg, Pennsylvania, and Fairmont, West Virginia.

The Company controls mines producing the best grades of anthracite coal with operations located in the Wyoming, Lehigh and Schuylkill regions, also in the Lykens Valley field. Its activities also extend into the bituminous field with a large number of mines in the Clearfield region, Fairmont region of West Virginia, and on the Conemaugh Division of the Pennsylvania Railroad.

The product of these mines is distributed largely in the New England, Middle, and Central States.

The officers of Madeira, Hill & Co. are:

Percy C. Madeira, President.

Robert C. Hill, Vice President.

Louis C. Madeira, Vice President.

Jesse W. Powell, Treasurer.

John Gilbert, Secretary.

John Edmonds, Sales Manager, Anthracite Dept.

Harlow C. Voorhees, Sales Manager, Bituminous Dept.

Maryland Coal & Coke Company
Stephen Girard Building
Philadelphia, Pennsylvania

The Maryland Coal & Coke Co. of Philadelphia is one of the substantial and favorably known producing companies in Pennsylvania. This company owns and operates four mines in the Clearfield District of Pennsylvania, having a capacity of some nine hundred tons a day. They also have two subsidiary companies, the Maryland New River Coal Co., and the Maryland Coal Mining Co., which operate the Boone, Smokeless and Bachman mines in the New River District, Fayette County, West Virginia, which has a capacity of 15,000 tons a month.

The Maryland Coal & Coke Co. also acts as exclusive selling agent for the Smith and Hamill mines of the Hamill Coal & Coke Co., located at Blaine, West Virginia, on the Western Maryland Railroad, and for the Guion mine of the Guion Coal Co. in the Clearfield District of Pennsylvania. They also do a general wholesale jobbing business, especially in smokeless fuel of West Virginia, New River and Pocahontas coals, together with coal from the Central Pennsylvania District. The annual tonnage of the company is approximately 750,000 tons.

This company has its headquarters in the Stephen Girard Building, Philadelphia, Pennsylvania, and have branch offices at 17 Battery Place, New York City; 441 Calvert Building, Baltimore, Maryland; Warwick Hotel Annex, Newport News, Virginia; and Altoona Trust Building, Altoona, Pennsylvania.

The officers of the company are: George P. Spates President, Medford J. Brown Vice President and Treasurer, and Frank A. Taylor Secretary.

COAL MEN OF AMERICA



WALTER P. BROWN, Philadelphia, Pennsylvania. President Charles D. Norton Coal Co., Philadelphia, was born in Philadelphia and has been in the coal business more than thirty years. This business was established in 1838. Mr. Brown is a brother-in-law of the late Charles D. Norton, who was the head of the Charles D. Norton Co. for many years.



JOSEPH BARTON GIVIN, Philadelphia, Pennsylvania, Secretary-Treasurer Chas. D. Norton Coal Co., Philadelphia, was born in Philadelphia November 29, 1888, and has been in the coal business fifteen years. He is also Secretary-Treasurer of the Schuylkill Coal Exchange and was formerly Secretary of the Chas. D. Norton Co. His entire business experience has been with this organization.

Chas. D. Norton Coal Company

217-221 Stephen Girard Building
Philadelphia, Pennsylvania

This well-known company is one of the pioneer coal firms of Pennsylvania, having been established originally in 1838, under the firm name of Roberts, Walton & Co., the firm being composed of Asa Packer, Joseph B. Van Dusen, Joseph Walton and William H. Roberts. Mr. Walton and Mr. Roberts retired from the firm about 1843, and Asa Packer retired in the year 1846, at the time the Lehigh Valley Railroad was incorporated, and he became its first President.

Joseph B. Van Dusen associated with him Charles F. Norton in 1848 under the firm name of Van Dusen, Norton & Co., and continued until 1860, when Mr. Van Dusen retired and Mr. Audenried, the father of the present Judge of the Common Pleas Court of Philadelphia County, joined with Mr. Norton under the title of Audenried, Norton & Co. Some years later, after the death of both Mr. Audenried and Mr. Norton, the business was continued by Charles D. Norton,

son of Charles F. Norton, under the firm name of Gorrell, Norton & Co., and later was changed to Charles D. Norton & Co.

In 1903 the company was incorporated as the Charles D. Norton Company, and continued until the death of Mr. Norton in July, 1916. The present corporation, Charles D. Norton Coal Company, has for its officers Walter P. Brown as President, a brother-in-law of the late Charles D. Norton, and Joseph B. Givin as Secretary and Treasurer, both of whom were associated with the Charles D. Norton Co. for many years.

The company is sole mine agents and shippers of Bituminous and Anthracite into all regions of the United States and Canada, specializing on Bituminous coal from Georges Creek, Western Maryland, West Virginia and Pennsylvania Bituminous fields, and Anthracite from mines located on Philadelphia & Reading, Pennsylvania and Lehigh & New England Railroads.

COAL MEN OF AMERICA



JAMES PIERPOINT, Philadelphia, Pennsylvania, President James Pierpoint & Sons Co., was born in England June 12, 1852, and has been in the coal business eleven years. He is President of the Locust Colliery Co. and interested in the Chesterton Coal Co.



THOMAS R. PIERPOINT, Philadelphia, Pennsylvania, Treasurer of James Pierpoint & Sons Co., was born in Bellefonte, Pennsylvania, November 4, 1885, and has been in the coal business seven years. He is also Secretary and Treasurer of the Locust Colliery Co.



ROBERT WILLIAM PIERPOINT, Philadelphia, Penn., Secretary and Sales Manager James Pierpoint & Sons Co., was born in Pittsburgh, Pennsylvania, July 17, 1890, and has been in the coal business seven years. He is a member of the Executive Board of the Philadelphia Wholesale Coal Trade Association.

THORNE, NEALE & CO., INC.,
Franklin Bank Building,
Philadelphia, Pa.

Thorne, Neale & Co., Inc., are a well-known wholesale coal company with general offices in Philadelphia, Pennsylvania, that operate a number of large producing mines and have a considerable tonnage of both anthracite and bituminous coal.

Their principal anthracite mines are: Buck Run, near Minersville; New Castle, at New Castle; Forty Fort and Harry E, at Forty Fort; Mount Lookout, at Wyoming; North West, at Carbondale; Sterrick Creek, near Dunmore; Lackawanna, near Olyphant; Washeries: at Locust Dale; and Edgerton, near Carbondale, all in Pennsylvania.

Among their bituminous mines are: Sonman Shaft, B Vein; Sonman Slope, E Vein, near Portage; Pine Hill, near Meyersdale, all in Pennsylvania.

The officers of the company are all well and favorably known in the coal trade, and are as follows: President, S. B. Thorne; Vice Presidents, James B. Neale, Charles E. Fernberg; Secretary, James H. Collier; Treasurer, Laurence T. Bliss.

The company's general offices are located in the Franklin Bank Building, Philadelphia. Charles E. Fernberg is the General Sales Agent; G. R. Gabell, in charge of Bituminous Sales; David C. Davis, in charge of Anthracite Sales, and have offices in the following cities: New York, Charles F. Randolph, Manager; Baltimore, J. Frank Foster, Manager; Chicago, George E. Medin, Manager; Boston, Earl F. Larrabee, Manager; Buffalo, Clarence F. Westfall, Manager; Mauch Chunk, Walter T. Stedman, Manager; Scranton, L. B. Cornell, Manager.

COAL MEN OF AMERICA



STANLEY M. MARTIN, Philadelphia, Pennsylvania.

President Beccaria Coal & Coke Co., was born in Philadelphia August 22, 1878, and has been in the coal business fifteen years. He was formerly with the Merchants' Coal Co. and the Quemahoning Coal Co.

**BECCARIA COAL & COKE COMPANY,
1206 Pennsylvania Building,
Philadelphia.**

This company operates mines at Beccaria, Clearfield County, Pennsylvania, mining a very high grade bituminous coal from the Moshannon vein. The shipping point is Smoke Run, Clearfield County, Pennsylvania. The mines are located on the lines of the Pennsylvania Railroad, and the output is sold into Eastern and Atlantic Seaboard territory.

Stanley M. Martin is President of the company, Howard R. Knecht of Bethlehem, Pennsylvania, is Treasurer, and Horace Boyd of Bethlehem is General Superintendent.

Blair-Parke Coal & Coke Co. Real Estate Trust Building Philadelphia

The Blair-Parke Coal & Coke Co. received its charter in Pennsylvania February 18, 1909, and produces a high grade of Bituminous and Gas coal, principally the latter. The output of their mines is sold largely in the East to steel mills, railroads, public service plants, cement plants, brick works and for by-product purposes.

The officers of the company are: C. H. Diffenderfer President and Treasurer, Harry B. Clark Vice President, and Edgar G. Carlisle Secretary.

COAL MEN OF AMERICA



HARRY KENNEDY CORTRIGHT, Philadelphia, Penn., President Cortright Coal Co., was born in Mauch Chunk, Pennsylvania, July 14, 1882, and has been in the coal business for thirteen years. He is also Vice President of the Beaver Run Coal Co. and the Boucher-Cortright Coal Co., a Director of the Winifrede Coal Co. of West Virginia, Vice President of the Philadelphia Wholesale Coal Trade Association, and a Director of the American Coal Trade Association. He was formerly with N. D. Cortright & Son and W. A. Marshall & Co. Mr. Cortright is a well known man in the community as well as in the trade, has a wide circle of friends, and comes from a family that has long been prominent in the coal business.

CORTRIGHT COAL COMPANY, Pennsylvania Building, Philadelphia.

The name "Cortright" is one of the oldest and most favorably known in the Pennsylvania coal trade. Harry K. Cortright is President of the Cortright Coal Co. and is the third generation of this family in the coal business. His grandfather, Nathan Dodson Cortright, was the Superintendent of the second coal company founded in the East, and when he died in 1902, at the age of 87, he was the oldest coal man in the United States.

The Cortright Coal Co. started as a partnership about ten years ago, consisting of F. B. and H. K. Cortright. Mr. F. B. Cortright died several years ago at the age of 37, and after his death the company was incorporated with H. K. Cortright as President and H. B. Cornog as Vice President. Mr. Cortright has a wide personal acquaintance in coal trade circles and is one of the best known and most popular of the younger members in the trade.

Pardee Brothers & Co., Inc. 447 Drexel Building Philadelphia, Pennsylvania

One of the largest and best known among the independent Anthracite producing companies is that of Pardee Brothers & Co., Inc., with general offices at Philadelphia. They operate Anthracite mines in Luzerne County, Pennsylvania, located on the Lehigh Valley Railroad, with an approximate output of 600,000 tons annually. These mines have been in operation since 1895 and produce a high grade of Anthracite for domestic use.

The officers of the company are: Ario Pardee President and Treasurer, C. Pardee Vice President, Theodore B. Fryer Secretary and Sales Manager and Jno. W. Crooks General Manager.

COAL MEN OF AMERICA



JOSEPH BALL VAN DUSEN, JR., Philadelphia, Penn.
Of Van Dusen, Bro. & Co., was born in Philadelphia July 11, 1861, and has been in the coal business thirty-eight years, succeeding his father, Joseph B. Van Dusen.



SAMUEL BALL VAN DUSEN, Philadelphia, Pennsylvania.
Of Van Dusen, Bro. & Co., was born in Philadelphia January 10, 1860, and has been in the coal business forty years. He is associated with his brother, Joseph B. Van Dusen.

The Westmoreland Coal Company

224 South Third Street
Philadelphia, Pennsylvania

This well-known coal producing company was chartered in 1854 and since beginning operation its coal has been largely used by the railroads, gas companies and the largest iron and steel mills of New England and the Middle States, and its character is established as having no superior in gas-producing qualities and in freedom from sulphur and other impurities.

The capital stock of the Westmoreland Coal Company is \$6,000,000 and the annual output at present is 3,000,000 tons. The company's mines are located at Irwin, Biddle Station, Export, Rillton and Yukon, Pennsylvania, all located in the famous Irwin Gas Coal Basin on the Pennsylvania Railroad in Westmoreland County, Pennsylvania, about twenty miles east of Pittsburgh.

The points of shipment are Philadelphia, Baltimore, Maryland, and South Amboy, New Jersey.

The financial status of the company is com-

mendable for the reason that in every year the stockholders have received a dividend since the company was incorporated.

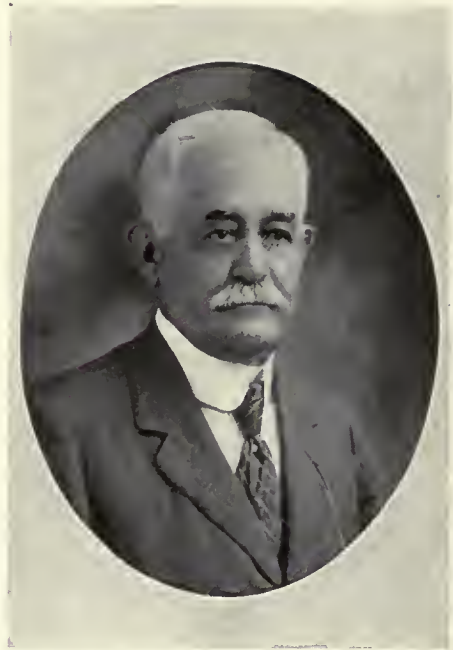
The Westmoreland Coal Co., through private ownership, controls the Penn Gas Coal Co. and the Manor Gas Coal Co., which mine and ship coal similar to the Westmoreland in character, as their mines are located in the same basin.

The officers of the Westmoreland Coal Co. are: S. Pemberton Hutchinson, President; H. C. Adams, Vice President; George McCall, Treasurer; Carroll B. Nichols, General Sales Agent; Herman Roll, Secretary and Assistant Treasurer; and Howard R. Yearsley, Assistant Secretary. The Board of Directors are: William D. Winsor, William Carpender, Lewis A. Riley, Edw. Lowber Welsh, S. Pemberton Hutchinson, C. S. W. Packard, Louis R. Page, John Hampton Barnes, Wilson Catherwood.

COAL MEN OF AMERICA



W. D. ALTHOUSE, Philadelphia, Pennsylvania.
Of W. D. Althouse & Co., Widener Building, Philadelphia, Pennsylvania, was born in Berks County, Pennsylvania, March 4, 1865, and has been in the coal business for twenty-eight years. Mr. Althouse started with the Philadelphia & Reading Coal & Iron Co. in 1890, afterwards going into business for himself, and is one of the substantial and well known coalmen in Philadelphia.



THOMAS W. AYERS, Philadelphia, Pennsylvania.
Of Ayers & Bro., was born in Philadelphia, April 1, 1848, and has been in the coal business for fifty-three years. He was formerly with Day, Huddell & Co. Mr. Ayers is one of the most highly respected members of the Philadelphia coal trade and has received many honors at their hands. He served as Imperial Modoc of the Order KoKoal.



H. C. BARR, Philadelphia, Pennsylvania.
Sales Manager J. S. Wentz Co., Upper Lehigh Coal Co., Midvalley Coal Co., and Maryd Coal Co., with offices in the Land Title Building, Philadelphia, was born in Bristol, Virginia, October 12, 1876, and has been in the coal business eighteen years. He was formerly with the Virginia Coal & Iron Co., Stonega Coke & Coal Co., and Royal Colliery Co., and has a wide acquaintance in the trade.



SAMUEL B. CHOWELL, Philadelphia, Pennsylvania.
Vice President Geo. B. Newton Coal Co. and subsidiary companies, Philadelphia, was born March 3, 1868, in Philadelphia, and most of his business career has been passed in the coal business in his native city, until 1904 as Manager of Sales for Geo. B. Newton & Co., then as President of Robert Henderson & Co. until 1912, and from 1912 to 1916 as President of the Geo. B. Newton Coal Co. Mr. Crowell has been President of the Pennsylvania Retail Coal Merchants Association, Vice President International Retail Coal Merchants Association, Vice President of the Philadelphia Coal Exchange, and Resident Vice President of the National Retail Coal Merchants Association. He has been prominent in the retail coal trade.

COAL MEN OF AMERICA

**EMPIRE COAL MINING COMPANY,
418 Stephen Girard Building,
Philadelphia, Pennsylvania.**

A large and important coal producing company in the East is that of the Empire Coal Mining Co., which sells both anthracite and bituminous coal, under the trade name of "Empire." They operate one mine at Barnesboro, Cambria County, Pennsylvania, and three mines at Clymer, Indiana County, Pennsylvania, with a total capacity of 3,000 tons daily. This tonnage is sold exclusively at tidewater, New York, and New England points.

The company was organized in 1895 and maintains selling offices at 1 Broadway, New York City, Worcester, Massachusetts, Syracuse, New York, Clearfield and Reading, Pennsylvania, in addition to their Philadelphia headquarters.

The officers of the company are: Wm. A. Webb President, G. W. Shillingford Secretary and Treasurer, and A. Rankin Manager of the New York office.



FREDERICK W. FOEDISCH, Philadelphia, Pennsylvania, Proprietor of F. W. Foedisch & Co. of Philadelphia, Pennsylvania, was born in Philadelphia, May 13, 1881, and has been in the coal business for twenty-three years. He is also Treasurer of the Indian Ridge Coal Co. and was formerly with the Davis Coal & Coke Co., Penn Collieries Co., and Hite & Rafetto.



M. REA GANO, Philadelphia, Pennsylvania, President and Chairman Board of Directors Gano, Moore & Co., Inc., Philadelphia, and South American Shipping Co., American Steamship Corp. of Brazil, and American Steamship Corp. of North America, was born in Newport, Ohio, April 15, 1883, and has been in the coal business sixteen years, exporting coal to Brazil, Chile, Argentine, Uruguay, Sweden, Spain and Portugal, and importing ores, coffee and nitrate from South America.



L. MINFORD HUMMICHOUSE, Philadelphia, Pennsylvania, Manager coal department of Ernest Law & Co., Harrison Building, Philadelphia, Pennsylvania, was born at Baltimore, Maryland, November 25, 1885, and has been in the coal business for fifteen years. He started with the Davis Coal & Coke Co., afterwards going with C. W. Hendley & Co., and assumed his present position in 1907.

COAL MEN OF AMERICA



HENRY C. PEARSON, Philadelphia, Pennsylvania,
Sales Agent Estate of A. S. Van Wickle, Philadelphia, Pennsylvania, was born in Philadelphia November 16, 1865, and has been in the coal business for thirty-one years, having formerly been with Geo. W. Bush & Sons Co., Smith & McKee and A. S. Van Wickle.



HOWARD D. PFEIFFER, Philadelphia, Pennsylvania,
President Howard D. Pfeiffer & Co., was born in Camden, New Jersey, September 27, 1881, and has been in the coal business eleven years. He is Secretary and General Manager of the Chaffee Coal Co. and President of the Dollie Coal Co. He was formerly with the George W. Bailey Co.

**LOGAN COAL COMPANY,
502 Harrison Building,
Philadelphia, Pennsylvania.**

One of the important producers of steam and forge coal is the Logan Coal Co. of Philadelphia, who operate eight mines in Cambria County, Pennsylvania, located on the Pennsylvania Railroad. These mines were in operation from 1900 to 1905, and have a railroad rating as to capacity of approximately a million tons annually.

The Logan Coal Co. maintains branch sales offices in New York, Boston and Chicago, in addition to their general office at Philadelphia, and have a wide market for their output in New England and the Northern United States.

The officers of the company are Wm. J. Faux President and General Manager and Guy L. Wheaton Secretary and Treasurer, both of whom are well known in the coal trade.

**MILLER COAL COMPANY,
503 Stock Exchange Building,
Philadelphia, Pennsylvania.**

This company operates a mine at Portage, Cambria County, Pennsylvania, producing 1,200 tons daily of bituminous coal from the original Wilmore Basin, Miller Seam. The output is a high-grade power plant coal. The mine is located on the Pennsylvania Railroad.

The Treasurer and General Manager of the company is H. R. Burt, who is well known in trade circles, and has been in the coal business for the past twelve years.

COAL MEN OF AMERICA



CHARLES K. SCULL, Philadelphia, Pennsylvania. Formerly one of the most widely known retail coal merchants in the United States, now retired, was born in Philadelphia November 27, 1853, and has been in the coal business forty-four years. He was formerly with the Philadelphia & Reading Coal & Iron Co. and later President of the Piedmont Cumberland Coal Co. Mr. Scull has held numerous positions of honor in the coal associations of Pennsylvania and has been an active retail coalman in Philadelphia for more than thirty years. He was active and prominent in the Order of KoKoal for ten years, and has been Secretary of the Philadelphia Coal Exchange since its incorporation in 1895.



THOMAS F. SLATTERY, Philadelphia, Pennsylvania. Owner of Slattery Bros., has been in the coal business sixteen years. He operates an anthracite mine in the Schuylkill district.



WALTER S. SMALLEY, Philadelphia, Pennsylvania. Individual Operator and Jobber, was born in Clayton, New Jersey, December 13, 1871, and has been in the coal business since 1888. He has interests in mining operations at St. Clair, Shamokin and Mlnooka, Pennsylvania. He was formerly with the Charles Warner Co. of Wilmington, Delaware, and the Mount Hope Coal Co. Mr. Smalley is a well-known coalman.



J. C. STAUFFER, Philadelphia, Pennsylvania. Manager Philadelphia branch B. Nicoll & Co., was born in Altoona, Pennsylvania, in 1876, and has been in the coal business twenty-one years. He was formerly connected with the Lloydell Coal Co., Majestic Coal Co., Allport Coal Co., Flenner, Henderson & Stauffer, and Frugalite Coal & Coke Co.

COAL MEN OF AMERICA



FRANK BAYARD STEWART, Philadelphia, Pennsylvania, President Winifrede Coal Co., Winifrede Railroad Co., and Belmont Coal Co., in West Virginia, with sales office in Cincinnati, Ohio, was born in Philadelphia in 1875, and has been in the coal business twenty-one years.



JOSEPH WARNER SWAIN, Philadelphia, Pennsylvania, Of Swain Bros., was born in Bristol, Pennsylvania, June 25, 1849, and has been in the coal business forty-eight years. This business was established by Edward and Joseph W. Swain in 1871.



ALFRED TURNER, Philadelphia, Pennsylvania, Only member of the firm of Colin & Turner, was born at West Hartlepool, England, July 25, 1863, and has been in the coal business ten years. He supplies only bunker coal to steamers, representing some of the largest shipping companies in the United Kingdom, and the British Admiralty since 1915.

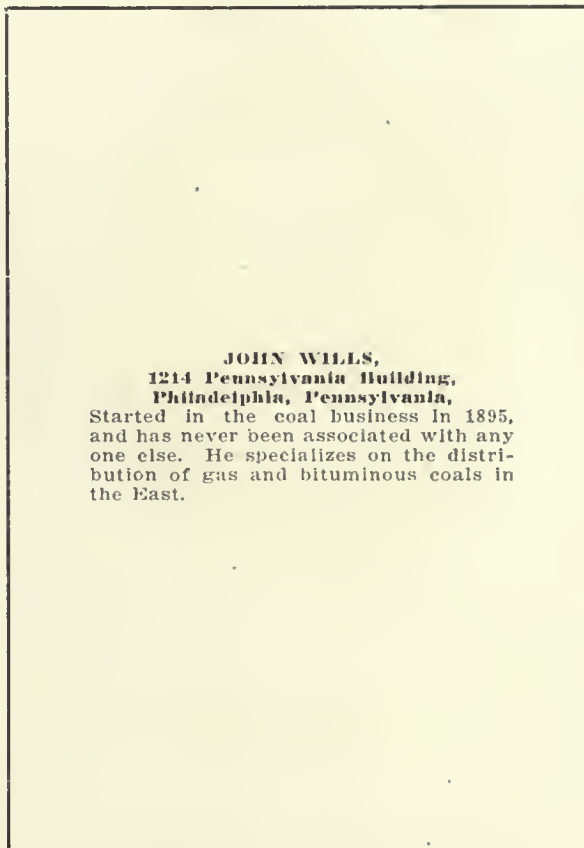


SAMUEL O. WALKER, Philadelphia, Pennsylvania, President and General Manager Coalmont Moshannon Coal Co., was born in Philadelphia July 8, 1864, and has been in the coal business eleven years.

COAL MEN OF AMERICA



FRANK HINES WIGTON, Philadelphia, Pennsylvania, President The Morrisdale Coal Co., The Morrisdale Coal Mining Co. and the Cunard Coal Co., was born in Huntingdon County, Pennsylvania, March 17, 1857, and has been in the coal business over forty years. He is a Director in the Miller Coal Co. and was formerly with R. B. Wigton and R. B. Wigton & Sons. Mr. Wigton is a pioneer coal operator, coming from a family of coal and iron operators whose activities demand more than usual mention.



JOHN WILLS,
1214 Pennsylvania Building,
Philadelphia, Pennsylvania,
Started in the coal business in 1895,
and has never been associated with any
one else. He specializes on the distri-
bution of gas and bituminous coals in
the East.



A. A. ZANE, Philadelphia, Pennsylvania, Of A. A. Zane & Co., was born in Philadelphia February 5, 1874, and has been in the coal business twenty-one years. He was formerly with J. H. Weaver & Co. and F. W. Foedisch & Co.



WALTER G. ROGEIS, Pittsburgh, Pennsylvania, Vice President and General Manager Fairview Mining Co., was born in Rogers, Ohio, May 3, 1881, and has been in the coal business fifteen years. He is the owner of several tracts of coal land. He was formerly with the Pittsburgh Coal Co., Monongahela River Consolidated Coal & Coke Co., Moreland Coke Co., Penobscot Coal Co. and Pryor Coal Co.

COAL MEN OF AMERICA



JOHN HENRY JONES, Pittsburgh, Pennsylvania, President Bertha Coal Co., Pittsburgh, was born in Greenock, Pennsylvania, October 7, 1866, and has been in the coal business forty-one years. He is well known throughout the trade, having recently organized thirteen different companies having a capital in excess of \$4,700,000 and a capacity of four million tons per annum.

COAL MEN OF AMERICA



JAMES EDWARD STEWART, Pittsburgh, Pennsylvania, Vice President Bertha Coal Co., was born in Shelburn, Indiana, December 25, 1876, and has been in the coal business over a quarter of a century. He is President of the Johnetta Brick & Coal Co.



D. C. EATON, Pittsburgh, Pennsylvania, Treasurer Bertha Coal Co., was born in Graysville, Ohio, November 7, 1865, and has been in the coal business twenty-seven years.



VICTOR T. REED, Pittsburgh, Pennsylvania, Secretary Bertha Coal Co., was born at Guelph, Canada, November 7, 1878, and has been in the coal business several years.



ISAAC T. JENKINS, Pittsburgh, Pennsylvania, With the Bertha Coal Co., Pittsburgh.

COAL MEN OF AMERICA



THURSTON WRIGHT, Pittsburgh, Pennsylvania,
President Penn Smokeless Coal Co. and the Wright-Gibson Co., was born in St. Louis, Missouri, January 29, 1879, and has been in the coal business seventeen years. He was formerly with the United Coal Co. and Merchants Coal Co. and later Receiver for both companies.



JOHN GIBSON, JR., Pittsburgh, Pennsylvania,
General Manager and Treasurer Penn Smokeless Coal Co., was born in Calvert County, Maryland, December 6, 1879, and has been in the coal business fourteen years. He was formerly with the United Coal Co., Canadian Collieries, and Arctic Coal Co. of Norway.

THE WRIGHT-GIBSON CO.

COAL AND COKE

PENN SMOKELESS COAL CO.

Miners and Shippers

QUEMAHONING SMOKELESS COAL

General Offices: UNION BANK BUILDING, PITTSBURGH, PA.



HIGH GRADE

LOW VOLIATILE

LOW SULPHUR

No Clinkers—Fusing Point 2700°

For By-Product—Smithing—Steam

MINES: JEROME AND BOSWELL, SOMMESET COUNTY, PA., Myersdale Freight Rate, B. & O. R.R.

COAL MEN OF AMERICA



EUGENE S. REILLY, Pittsburgh, Pennsylvania. President Reilly-Peabody Fuel Co., American Connellsville Coal & Coke Co., Georges Creek Coal Mining Co., and the American Gas Coal Co., was born in Pittsburgh December 14, 1873, and has been in the coal business eleven years.

FRANK E. PEAHODY, Pittsburgh, Pennsylvania, Treasurer and General Manager Reilly-Peabody Fuel Co., American Connellsville Coal & Coke Co., Quality Coal & Coke Co., Georges Creek Coal Mining Co., and American Gas Coal Co., was born in Columbus, Ohio, May 8, 1887, and has been in the coal and Connellsville coke business twelve years. He was formerly connected with the Producers Coke Co., American Steel Co. and the Peabody Coal & Coke Co. Mr. Peabody is developing a large tract of Fairmont gas coal.

THE REILLY-PEAHODY COMPANY.

The Reilly-Peabody Fuel Co., a Pennsylvania corporation, started business the latter part of the year 1917, having control of the operations and output of the American Connellsville Coal & Coke Company's American Works Nos. 1, 2 and 3, located in the famous Connellsville coke region.

The operations of the Reilly-Peabody Fuel Co. have developed a coal and coke sales agency, controlling and distributing the output of other large producers in addition to their own operations. The Reilly-Peabody Fuel Co. has since acquired control of and is now operating the Quality Coal & Coke Co., with mines in Huntingdon County, Pennsylvania, The Georges Creek Coal Mining Co., operating at Lonaconing, Maryland, and the American Gas Coal Co., a West Virginia corporation.

The operations of The Georges Creek Coal Mining Co. at Lonaconing are being developed under the ordinary mining methods and also under the new "day-light mining" or stripping process.

The West Virginia acreage has just been acquired and comprises some 300 acres of splendid by-product coking and gas coals.

The officers of the Reilly-Peabody Fuel Co. since its incorporation have been: Eugene S. Reilly, president; L. P. Monahan, Vice President; F. E. Peabody, Treasurer; L. A. Quinlivan, Secretary.



LAURENCE A. QUINLIVAN, Pittsburgh, Pennsylvania, Secretary Reilly-Peabody Fuel Co., was born in Latrobe, Pennsylvania, in 1888, and has been in the coal business six years. He is also interested in the American Connellsville Coal & Coke Co., American Gas Coal Co., and Georges Creek Coal Mining Co. He is a Director of the National Coal Jobbers' Association.

COAL MEN OF AMERICA



GEORGE S. BATON, Pittsburgh, Pennsylvania. President Greensburg-Connellsville Coal & Coke Co., was born in Philadelphia, and has been in the coal business twenty-four years. He is also Consulting Mining Engineer of Baton & Elliott. He is President of the Board of Examiners, Pennsylvania State Mine Inspectors.



WILLIAM ALBERT PERRY, Pittsburgh, Pennsylvania, General Manager Greensburg-Connellsville Coal & Coke Co., was born in New England, Ohio, September 14, 1881, and has been in the coal business nineteen years. He was formerly with the Forsythe Coal Co., Mexican Coal & Coke Co., Les Esperansa, Mexico, the Republic Iron & Steel Co., United Coal Co., and W. J. Rainey Coke Co. He is a member of the American Society of Mining Engineers, and is a well known mine expert.



EDWARD JOHN FRAUENHEIM, JR., Pittsburgh, Penn., President and Treasurer Logansport Coal Co., was born in Pittsburgh, Pennsylvania, October 1, 1890, and has been in the coal business four years. The company turns out about 600 tons per day and is well and favorably known.



W. G. FRAUENHEIM, Pittsburgh, Pennsylvania, Vice President and Secretary Logansport Coal Co., was born at Pittsburgh, Pennsylvania, January 13, 1894, and has been in the coal business three years.

COAL MEN OF AMERICA



WILLIAM KELSEY FIELD, Pittsburgh, Pennsylvania, President Pittsburgh Coal Co., was born in Columbus, Ohio, in 1865, and has been in the coal business twenty-five years. He was formerly with the Sunday Creek Coal Co. and the St. Paul & Western Coal Co.



JOHN A. DONALDSON, Pittsburgh, Pennsylvania, Vice President Pittsburgh Coal Co., was born in Candor, Pennsylvania, in 1865, and has been in the operating end of the coal business thirty-five years. He was formerly with the Midland Coal Co. and the Monongahela River Consolidated Coal & Coke Co.



THOMAS F. ASHFORD, JR., Pittsburgh, Pennsylvania, President and General Manager Second Pool Coal Co., was born in Pittsburgh August 14, 1868, and has been in the coal business thirty years. He was formerly with T. M. Jenkins & Co. and the Flinn Coal Co. as Manager.



THOMAS F. ASHFORD, III., Pittsburgh, Pennsylvania, Secretary Second Pool Coal Co., Pittsburgh, was born August 10, 1892, in Pittsburgh and has been in the coal business nine years.

COAL MEN OF AMERICA

THOMAS BEADLING, Carnegie, Pa., Vice President and General Manager Verner Coal & Coke Co., was born in Pittsburgh, Pennsylvania, October 31, 1851, and has been in the coal business fifty-four years. Mr. Beadling is also interested in the Ferguson Coal & Coke Co. and Tasa Coal Co. He was formerly with Hartley & Marshall, Long Coal Co. and Beadling Bros.



HOWARD B. SALKELD, Pittsburgh, Pennsylvania, Assistant Secretary, Treasurer and Manager of Sales Verner Coal & Coke Co. and Assistant Secretary and Treasurer Wabash Coal Co., was born in Lloydsville near Altoona, Pennsylvania, September 1, 1880, and has been fifteen years in the coal business. He was previously connected with the Kirkbride Coal Co. He is also Secretary and Treasurer of the Ferguson Coal & Coke Co., Pittsburgh Block Coal Co. and the Tasa Coal Co.



IRA E. BIXLER, Pittsburgh, Pennsylvania, President Bixler Coal & Coke Co., was born in Bolivar, Ohio, May 23, 1881, and has been in the coal business fifteen years. He is also Vice President of the Bixler Coal Co., Columbus, Ohio, Vice President Dunn-Connellsville Coal & Coke Co., President of the Continental Steel & Supply Co. and President of the Enterprise Sand Co., all of Pittsburgh.

**POLAND COAL CO.,
1013 House Building,
Pittsburgh, Pennsylvania.**

This company was organized in 1912, being incorporated under the Pennsylvania laws. It specializes upon the distribution of bituminous coals only—gas, steam and by-product—to manufacturing plants.

The officers of the company are: Julian Kennedy, President; R. C. Crawford, Vice President and General Manager; J. O. Miller, Secretary and Treasurer; and George W. Forney, Sales Manager.

COAL MEN OF AMERICA



ALFRED R. HAMILTON, Pittsburgh, Pennsylvania, President A. R. Hamilton & Co., was born in Pittsburgh July 19, 1872, and has been in the coal business twenty years. He is also President of the North Pennsylvania Coal Co. and the B. S. Hammill Coal Co. and Vice President of the Barnes Coal Co. He was formerly with the Pittsburgh Coal Co. Mr. Hamilton holds several positions of honor in the various coal associations, is Chairman of the Committee on Production and an Executive Board Member of the National Coal Association, and is well known throughout the trade. He has many other business interests in the community.



BENJAMIN SAMUEL HAMMILL, Pittsburgh, Pennsylvania, Owner of the company bearing his name, President B. S. Hammill Co., Vice President B. S. Hammill Coal Co. and President B. S. Hammill, Inc., was born of American parents at Preston, Ontario, Canada, October 4, 1865, and has been in the coal business nineteen years. He was formerly with the Henderson Coal Co., Marine Coal Co., Monongahela River Consolidated Coal & Coke Co., Pittsburgh Terminal Railroad & Coal Co. and C. Jutte & Co.



GEORGE T. KIRKBRIDE, Pittsburgh, Pennsylvania, Manager Langeloth Coal Co., was born in Carnegie, Pennsylvania, in 1861, and has been in the coal business thirteen years. He was previously connected with the Kirkbride Coal Co.



R. C. MASTEN, Pittsburgh, Pennsylvania, President Masten Coal Co., was born in Rochester, Pennsylvania, August 31, 1880, and has been in the coal business seven years. He operates in the Pittsburgh seam, with a yearly output of 100,000 tons.

COAL MEN OF AMERICA



WILLIAM HAHMAN, Altoona, Pennsylvania, General Manager Lilly Coal Co., Altoona, Pennsylvania, was born in Philadelphia, Pennsylvania, November 1, 1867, and has been in the coal business twenty-eight years. He is also interested in the Munster Coal Co., Clear Creek Coal Co. and Hahman & Richards.



LAWRENCE MARVIN RYAN, Altoona, Pennsylvania, Secretary and Treasurer Cambria & Moshannon Coal Co., Altoona, Pennsylvania, was born in Syracuse, New York, January 5, 1886, and has been in the coal business ten years. He is also General Manager of the Heverly Coal Co. Mr. Ryan was formerly connected as Manager of Sales with the Lilly Coal Co. and W. H. Hughes & Co.



EDWARD E. MCGILL, Erie, Pennsylvania, Proprietor of the Burnwell Coal Co., Erie, Pennsylvania, was born in Bayonne, New Jersey, November 6, 1884, and has been in the coal business for thirteen years, previously bookkeeper for the G. J. Gebhords Co., Erie. Mr. McGill purchased his company from A. K. & R. W. Britton October 25, 1915, who were also doing business as the Burnwell Coal Co.



EDWARD P. WITTMANN, Erie, Pennsylvania, President of Wittmann-Pfeffer Co. and General Manager of the Momeyer Coal Co., Erie, Pennsylvania, was born in Erie on March 3, 1874, and has been in the coal business for twenty-nine years, previously with the following firms: R. W. Russell, retail; Youghiogheny River Coal Co., The W. L. Scott Co., and the Pittsburgh & Erie Coal Co., wholesale. He has added, in recent years, building materials to the coal business.

COAL MEN OF AMERICA



JACOB U. KUHNS, Greensburg, Pennsylvania. President of the Mt. Pleasant Coke Co. and a Director of the Donohoe Coke Co. and the Mt. Hope Coke Co., Greensburg, Pennsylvania, was born in Greensburg in 1871, and has been in the coal business for seventeen years. He is a member of the Coke Producers' Association of the Connellsville District.



C. J. KLINE, Greensburg, Pennsylvania, Secretary and Treasurer of the Mt. Pleasant Coke Co., was born in Greensburg January 5, 1880, and has been in the coal business twenty years. He has held various positions with the present company since 1897.



WILLIAM RADFORD COYLE, Bethlehem, Pennsylvania, Vice President and General Sales Manager Weston Dodson & Co., was born in Washington, D. C., in 1878, and has been identified with the coal industry ten years. Before engaging in the coal business Mr. Coyle had experience as soldier, civil engineer, and lawyer. He has served as Vice President of the National Coal Jobbers' Association and as a Director of the New York Wholesale Coal Trade Association. He is now in the service with the United States Marines.



H. C. BURKET, Greensburg, Pennsylvania, President of the Atlantic Crushed Coke Co., and a Director of the Marlon Gas Coal Co. and the Acme Gas Coal Co., was born in Arch Springs, Pennsylvania, and has been in the coal business for thirty years. He was previously associated with the following firms: Manor Gas Coal Co., Alexandria Coke Co., Morgan, Moore & Bain Co., and United Coal & Coke Co. He is now a Director of the First National Bank of Greensburg and President of the Greensburg Storage & Transfer Co.

COAL MEN OF AMERICA



WALTER LESLIE MONTGOMERY, Harrisburg, Pennsylvania, known all over the states of Pennsylvania, New Jersey, Delaware, and Maryland for his extensive experience in the coal business. Mr. Montgomery is a charter member of the Harrisburg Reserves, Bank Director, President of the Harrisburg Coal Exchange, Vice President of the Pennsylvania Retail Coal Merchants Association, and a member of many organizations pertaining to the coal trade.

In fact there are few men in Pennsylvania so well versed in the coal trade as Mr. Montgomery, and his opinions on important questions carry with them the weight of study and experience. He has done much personally for the advancement of good in the coal merchandising not only in the state of Pennsylvania but throughout the eastern states.

Mr. Montgomery was born in Harrisburg, Pennsylvania, January 22, 1872, and comes from a family that has been prominent in the business and social life of the state for over a century. His administration of affairs has been the highest degree successful, and he is regarded as one of the most efficient men in business in the East, not only as the head of the coal firm, but with numerous other enterprises.



S. E. DICKEY, Johnstown, Pa.

President of the firm of S. E. Dickey & Co., Civil, Mining and Consulting Engineers, and President of the S. E. Dickey Coal Co., was born in Kittanning Township, Pennsylvania, March 30, 1880, and has been in the engineering business for the past sixteen years. His firm has been actively engaged in the mining and consulting engineering business for the last eight years, having offices at 809-811 Johnstown Trust Building, Johnstown, Pennsylvania, employing a large force of engineers and assistants, having charge of the engineering for a large number of coal companies, representing in all seventy-five operating mines. The S. E. Dickey Coal Co. is a subsidiary company of the engineering company and is to be the holding company for the purpose of operating, superintending and managing mines, properties and estates. Mr. Dickey has a very broad experience in the engineering and mining business, being reared in the heart of the bituminous coal district of Pennsylvania. He has been employed in all capacities in and about the mines. Starting at the age of twelve years he has been continuously engaged at this work except during the school periods. Each summer vacation was spent working at the mines or with an engineering corps.

COAL MEN OF AMERICA



H. F. GRAZIEM, Johnstown, Pennsylvania, Treasurer of the Grazier Coal & Coke Co., Johnstown, Pennsylvania, and Treasurer of the Grazier Coal Mining Co., was born in New Paris, Pennsylvania, December 27, 1877, and has been in the coal business for fourteen years.



TELFORD LEWIS, Johnstown, Pennsylvania, Vice President and General Manager of the Somerset Mining Co., Knickerbocker Smokeless Coal Co., Wilbur Coal Mining Co., Telford Coal Co. and Jasahill Coal Mining Co., and Secretary Knickerbocker Fuel Co., was born in Johnstown October 20, 1873, and has been active in the coal business for twenty years. He made his start in the coal industry as a mining engineer for the Cambria Steel Co. He is a Director of the Johnstown Coal Club and of the Somerset County Coal Operators Association.

WILLIAM J. KUNTZ, Johnstown, Pa., President of the Dixonville Coal Co., the Citizens Coal Co., the Operators Coal Mining Co. and a Director in the Conemaugh Smokeless Coal Co., Johnstown, Pennsylvania, was born in Johnstown May 3, 1864, and has been engaged actively in the operating end of the coal business for fifteen years.



WILLIAM T. PAYNE, Kingston, Pennsylvania, Vice President, Treasurer and General Manager of the East Boston Coal Co., Kingston, Pennsylvania, also President of the Raub Coal Co., and Vice President of the Evans Colliery Co., was born in Kingston April 20, 1871, and has been in the coal business for twenty-six years. His father, William G. Payne, has been connected with the anthracite trade since 1866 as wholesaler and operator. His grandfather, Edward Payne, of Minersville, Pennsylvania, began operating in the anthracite fields in 1841. The Payne family has been continuously in the mining business since that year.

COAL MEN OF AMERICA



JORN C. COSGROVE, Johnstown, Pennsylvania, President Cosgrove & Co., Johnstown, was born April 28, 1886, in Houtzdale, Pennsylvania, and has been in the coal business twelve years, since his graduation from the Pennsylvania State College. He is also President of the Marion & Pittsburgh Coal Co. of Johnston City, Illinois, Marion & Eastern Railroad of Marion, Illinois, Homer City Coal Co., Lenox Coal Co., Thermal Smokeless Coal Co., and Moxham Coal Co. of Johnstown, General Manager Ernest Coal Co., of Johnston City, and President Farmers Trust & Mortgage Co. of Johnstown. Mr. Cosgrove is a Director in several banking institutions and interested in other coal mining companies.



A. K. COSGROVE, Philadelphia, Pennsylvania, Treasurer Cosgrove & Co., Stephen Girard Building, Philadelphia, was born in Hastings, Pennsylvania, in 1889, and has been in the coal business eight years. He is also interested in the Ernest Coal Co., Homer City Coal Co., Lenox Coal Co., Thermal Smokeless Coal Co., and Grazier Coal Mining Co., and was formerly with A. W. Hillebrand and R. C. Lea & Co.



PAUL B. COSGROVE, Johnstown, Pennsylvania, Deceased, was a member of Cosgrove & Co., Johnstown, up to the time of his death December 22, 1917. He was born January 29, 1888, in Houtzdale, Pennsylvania, and service in the United States army and six years in the coal business constituted the active part of his life. At the time of his death Mr. Cosgrove was Secretary of the Marion & Pittsburgh Coal Co. of Marion, Illinois, Vice President of the Lenox Coal Co. of Hastings, Pennsylvania, Vice President of the Thermal Smokeless Coal Co. of Johnstown, Pennsylvania, and Treasurer of the Marion & Eastern Railroad Co. of Marion, Illinois.



H. J. MEEHAN, Johnstown, Pennsylvania, Member of the firm of Cosgrove & Co., Johnstown, was born July 21, 1878, in McIntyre, Lycoming County, Pennsylvania, and has been in the coal business twenty years. He is also President of the Ernest Coal Co. and General Manager of the Marion & Pittsburgh Coal Co. of Johnston City, Illinois, and General Manager of the Homer City Coal Co., Grazier Coal Mining Co., Millerton Coal Co., Thermal Smokeless Coal Co., Lenox Coal Co., Homer City Coal Co., Moxham Coal Co., all of Johnstown. Mr. Meehan has had a wide experience as superintendent of mines for leading coal, coke and steel interests.

COAL MEN OF AMERICA



MILTON W. LOWRY, Scranton, Pennsylvania, President Carbon Creek Coal Co. (mines at Shamokin), Scranton, was born in Elkdale, Susquehanna County, Pennsylvania, March 10, 1859, and has been in the coal business sixteen years. Mr. Lowry, a lawyer by profession, has always taken an active part in civic and educational matters and has held numerous positions of honor. He has served as President of the Select Council of the city of Scranton, as President of the Republican State League of Clubs of Pennsylvania, and is a member of the Executive Committee of the Board of Trustees of the Pennsylvania State College, from which he was graduated in 1884.



WILLIAM ARTHUR THOMAS, Scranton, Pennsylvania, Vice President and General Manager Carbon Creek Coal Co., Scranton, was born in Lynn, Pennsylvania, September 10, 1872, and has been in the coal business eleven years. He was formerly President of the Rocky Ridge Coal Co. of Robertsdale, Pennsylvania.



WILLIAM GARDNER PEARSON, Scranton, Pennsylvania, Director and Secretary Carbon Creek Coal Co., Scranton, was born in Scranton August 18, 1880, from old New England stock and has been in the coal business five years. He was formerly with the Pennsylvania Coal Co. Mr. Pearson is a member of the Masonic bodies and many social and civic organizations.



HARRY A. SMITH, Scranton, Pennsylvania, Sales Agent for the Delaware, Lackawanna & Western Coal Co., was born in Scranton January 16, 1878, and has been in the coal business twenty years. He was formerly with the Delaware, Lackawanna & Western Railroad Co.

COAL MEN OF AMERICA

MARCUS W. SAXMAN, Latrobe, Pa., President Saxman Coal & Coke Co., Latrobe, Treasurer of the Superior Fuel Co. and Operating Manager of the Bradenville Coal & Coke Co., was born in Latrobe December 24, 1867, and has been in the coal business thirty years. He is President of the Latrobe Electric Steel Co., Blairsville Iron Works, and Citizens National Bank of Latrobe, Treasurer of the Russellton Stone Co., Victor Stone Co., and Derry Glass Sand Co., and a Director of the Latrobe Tool Co., Latrobe Trust Co., and First National Bank of Russellton. He has been connected with the Latrobe-Connellsville Coal & Coke Co., the Greenwich Coal & Coke Co., the Cardiff Coal Co., Kelso Smokeless Coal Co., Unity Coal Co., and Kent Coal Co.



CHARLES CALVIN HOWMAN, Pittston, Pennsylvania, President Avoca Coal Co., Avoca, Pennsylvania, Vice President Roden Coal Co., Marvel, Alabama, Secretary-Treasurer and a Director Franklin Coal Co., Simpson, Pennsylvania, and a Director Raub Coal Co., Luzerne, Pennsylvania, was born in Troy, New York, March 14, 1852, and has been engaged in the mining and shipping of coal since 1876. He was Mayor of Pittston, and a member of Congress.

**OLIPHANT COAL & COKE CO.,
Third National Bank Building,
Uniontown, Pennsylvania.**

This company has two operations located near Fairchance, Fayette County, Pennsylvania, mining daily 500 tons of steam coal, and shipping to both Eastern and Western markets.

Frank R. Crow is President of the company.

**STANDARD FUEL CO.,
First National Bank Building,
Uniontown, Pennsylvania.**

This company, consisting of M. D. Brooke and D. H. McGee, are miners and shippers of high grade coking, gas and steam coals, having the exclusive agency for the coal of the Buckhannon River Coal Co. of Adrian, West Virginia, on the Coal & Coke Railway. They also ship from Pennsylvania bituminous fields, from mines located on the Baltimore & Ohio Railroad, Western Maryland Railway, Pittsburgh & Lake Erie Railway and Pennsylvania Railway.

COAL MEN OF AMERICA



ROBERT W. GILMORE, Uniontown. Born at Philadelphia, Pennsylvania, October 6, 1868, and lived there until August 1, 1900. For a number of years before leaving Philadelphia he held the position of Confidential Clerk and Cashier at the Edge Tool Works of Fayette R. Plumb, Inc., located at Frankford, Philadelphia. In August, 1900, he went to Fayette County, Pennsylvania, having taken over a large merchandise store, but sold out of that to engage in the coking business, following the latter business until July 1, 1917, when he sold all of his interests to engage actively in the mining of coal and the selling of coal and coke. During this time he incorporated, constructed and managed the following concerns: The Newcomer Coke Co., Banning-Connellsville Coke Co., and the Wineland-Gilmore Coal & Coke Co., also was one of the incorporators of the Producers Coke Co., a brokerage concern handling millions of tons of coal and coke each year. Since October 1, 1916, with his brother as partner, he has been engaged in the brokerage business under the name of General Fuel Co., Uniontown, Pennsylvania, buying and selling coal and coke, also operating his two mining propositions, Eleanor Coal Co. and Commercial Coal Co., located at Wyano, Westmoreland County, Pennsylvania.



WALTER J. GILMORE, Uniontown. Born and raised at Philadelphia, and up to September, 1900, was actively engaged with Fayette R. Plumb, manufacturer of edge tools, and for about another year engaged in selling coal with the local office of a coal mining and shipping company. In 1901 he went to Fayette County as an employe of the H. C. Frick Coke Co. In the early part of 1908 he took charge of the Midland Coal & Coke Co., Phillippi, West Virginia, as General Superintendent. In 1909 he returned to Fayette County and accepted a position with the Sunshine Coal & Coke Co. In 1911 Mr. Gilmore became associated with the Producers Coke Co., a coal and coke agency, as General Manager and later on became Secretary. In October, 1916, he left the above company to take an interest with his brother in the General Fuel Co., Uniontown, Pennsylvania, coal and coke wholesale jobbers, assuming active part of Sales Manager, in which duties he is now engaged.

COAL MEN OF AMERICA



SIDNEY A. CARSON, Greensburg, Pennsylvania, President Pennsylvania Fuel Co., Uniontown, Pennsylvania, was born in Pittsburgh, Pennsylvania, September 2, 1879, and has been in the coal business since 1895. He is also General Manager of the Southern Connellsville Coke Co. and the Northern Connellsville Coke Co., and Secretary and Treasurer of the Westmoreland Fuel Co. He was formerly with the H. C. Frick Coke Co. and J. K. Dimmick & Co.



GEORGE M. HOCHHEIMER, Uniontown, Pennsylvania, Treasurer and Sales Manager of the Pennsylvania Fuel Co., also Treasurer of the Faith Coal Co., Uniontown, Pennsylvania, was born in Uniontown October 1, 1879, and has been in the coal business for fifteen years. He was previously with the National Fuel Co.

Pennsylvania Fuel Co., First National Bank Building, Uniontown, Pennsylvania

As wholesalers this company handles 60,000 tons monthly of steam, gas, by-product coal and coke from Pennsylvania and West Virginia. They are the exclusive selling agents for:

The Northern Connellsville Coke Co., located at County Home Junction, Westmoreland County, Pennsylvania, on the Pennsylvania Railway.

The Southern Connellsville Coke Co., located at Cheat Haven, Fayette County, Pennsylvania, on the Baltimore & Ohio Railroad.

The Faith Coal Co., located at Davent, Fayette County, Pennsylvania, on the Pennsylvania Railway.

S. A. Carson is President and George M. Hochheimer Treasurer.

COAL MEN OF AMERICA



HARRY WHYEL, Uniontown, Pennsylvania, President Whyel Coal Co., a Director of the Consolidated Coke Co., Uniontown, and a Director of the Pioneer Coal & Coke Co., Pittsburgh, Pennsylvania, was born in Pittsburgh February 24, 1863, and has been engaged in the operating end of the coal business for thirty-three years, the first fifteen with the Frick Coke Co., and since that time for himself. He is President of the Coke Producers' Association of the Connellsville region. His father, Matthias Whyel, was one of the pioneers in coal mining in the Pittsburgh district.



GEORGE WHYEL, Uniontown, Pennsylvania, President of the Consolidated Coke Co. and Secretary and Treasurer of the Whyel Coke Co., Uniontown, Pennsylvania, and President of the Pioneer Coal & Coke Co., Pittsburgh, Pennsylvania, was born in Pittsburgh February 24, 1863, and has been engaged in coal operations for thirty-three years. At the age of twenty-one he became Superintendent for J. D. Boyd & Co., then devoted his whole time after 1890 to mining engineering until he became the owner of the Lynn Coal Co., which he sold in 1899, to become Superintendent for the Frick Coal Co. for six months. He built the Revere plant for W. J. Rainey, after which, in 1900, he went into the operating field for himself.



MORRIS CRAWFORD ROYD, Wilkes-Barre, Pennsylvania, Of Haddock, Payne & Boyd, Wilkes-Barre, Managers Alden Coal Mining Co., was born in Yonkers, New York, and has been in the coal business twenty-seven years. He was previously with Dickson & Eddy, A. S. Swords & Co., and the Riverside Coal Mining Co.



JAMES H. HUGHES, Wilkes-Barre, Pennsylvania, President of the Archbald Coal Co., Wilkes-Barre, Pennsylvania, was born in Carbondale, Pennsylvania, January 22, 1860, and has been engaged in the coal mining business for thirty-four years. He followed up his education in Pennsylvania at the University of Colorado, Boulder, and was Assistant Assayer with the Golden Smelting & Reduction Co. in 1881-1882. Then he returned to Pennsylvania, and has been with the Lehigh & Wilkes-Barre Coal Co., Keystone Coal Co., Dodge & Hughes, and Hughes, Moore & Sterling, mining engineers and agents for coal estates, consulting engineer for Anthracite Coal Co. of Pittsburgh, and General Manager of Archbald Coal Co. from 1910 to 1916.

COAL MEN OF AMERICA

PENNSYLVANIA—Allentown

CHARLES ANDROSE BAKER, senior member of Baker Bros., Allentown, Pennsylvania, was born in Harrisburg, Pennsylvania, October 19, 1861, and has been in the coal business fifteen years.

HARRY M. BAKER, Manager Baker Bros., Allentown, Pennsylvania, was born in Lancaster, Pennsylvania, November 5, 1863, and has been in the coal business fifteen years. Mr. Baker was formerly with C. R. Bachman Coal Co.

DE FOREST BAST of Allentown, Pennsylvania, was born in Freemansburg, Pennsylvania, October 27, 1861, and has been in the coal business thirty-two years. Mr. Bast served as President of the Allentown Retail Coal Association two years.

JOHN H. GLASSER, Allentown, Pennsylvania, salesman with Whitney & Kemmerer's Philadelphia office, was born in Allentown June 21, 1875, and has been in the coal business fifteen years. Mr. Glasser was formerly associated with the C. R. Bachman Coal Co. and the Pittsburgh-Buffalo Co.

FORRECT C. HAUSMAN, proprietor of the Auto Coal & Supply Co., Allentown, Pennsylvania, was born in Bethlehem, Pennsylvania, March 27, 1870, and has been in the coal business since April, 1915.

LLEWELLYN G. HEILMAN, retail coal merchant of Allentown, Pennsylvania, was born in Lowhill, Pennsylvania, May 13, 1873, and has been in the coal business five years.

J. H. KOEHLER of Koehler Bros., Allentown, Pennsylvania, was born in Allentown in 1863, and has been engaged in the coal business a quarter of a century.

W. A. KOEHLER of Koehler Bros., Allentown, Pennsylvania, was born in Allentown in 1868 and has been in the coal business a quarter of a century.

MILLARD A. KUDER, retail coal merchant of Allentown, Pennsylvania, was born at Trexlertown, Pennsylvania, November 12, 1862, and has been in the coal business fourteen years. He was formerly with the James F. Butz Co. He is President of the Retail Coal Merchants' Association of Allentown.

EDGAR J. LUMLEY, retail coal merchant of Allentown, Pennsylvania, was born in Allentown September 12, 1858, and has been in the coal business twenty-eight years.

WALLACE H. MARSTELLER, retail coal merchant of Allentown, Pennsylvania, was born in Alburts, Pennsylvania, January 4, 1861, and has been engaged in the coal business six years.

LEO A. STEM, Line Sales Agent of the Lehigh Valley Coal Sales Co., in Allentown, Pennsylvania, was born in Cherryville, Pennsylvania, October 25, 1861, and has been in the coal business since 1881, the entire time with his present company.

PENNSYLVANIA—Erie

JOSEPH W. GLOWACKI, President of the Erie Coal Co., Erie, Pennsylvania, was born in Erie, October 16, 1880, and has been in the coal business for twelve years.

JULIUS F. GLOWACKI, Treasurer of the Erie Coal Co., Erie, Pennsylvania, was born in Erie, August 13, 1876, and has been in the coal business for twelve years.

CHARLES J. GUELCHER of Guelcher Bros., Erie, Pennsylvania, was born in Erie in 1869, and has been in the coal business for twenty-five years. He was previously with R. J. Saftman for ten years and William F. Momeyer for eight years.

HENRY WILLIAM GUELCHER of Guelcher Bros., Erie, Pennsylvania, was born in Erie, April 22, 1872, and has been in the coal business for seven years.

MASON P. MIZENER, Manager Mizener Coal Co., Erie, Pennsylvania, was born in Erie, and has been in the coal business for twenty years.

MORTIMER H. MIZENER, Treasurer Mizener Coal Co., Erie, Pennsylvania, was born at Flushing, Long Island, New York, August 29, 1866, and has been in the coal business for twenty-five years.

CHARLES L. SIEGEL, Manager of the J. F. Siegel Coal Co., Erie, Pennsylvania, was born in Erie, August 24, 1875, and has been in the coal business for twenty years.

PENNSYLVANIA—Philadelphia

ALVA B. RATES of Fleming & Bates, Philadelphia, was born in Philadelphia August 30, 1877, and has been in the coal business for twenty-three years. He was formerly with the William M. Lloyd Co.

WALTER STILSON BLAISDELL, Secretary-Treasurer-Manager Punksutawney Coal Mining Co., Anita Coal Mining Co., and Williams Run Coal Co. of Philadelphia, Pennsylvania, was born in Macomb, Illinois, May 21, 1866, and has been in the coal business for eleven years.

P. H. BURGER of the firm of Weston Dodson & Co., Philadelphia, Pennsylvania, has been connected with this firm since 1914 as salesman, now holding the position of Philadelphia Sales Manager. Mr. Burger is an expert mechanical engineer.

JOSEPH H. CAMPBELL, Treasurer Duncan-Spangler Coal Co., Philadelphia, Pennsylvania, and Vice President Jos. H. Reilly Coal Co., was born in Philadelphia January 9, 1873, and has been in the coal business twenty-six years. He was formerly with Peale, Peacock & Kerr and the Blubaker Coal Co.

EDGAR CARLISLE, Secretary Blair-Parke Coal & Coke Co., Philadelphia, Pennsylvania, has been in the coal business for some years and is well known in the trade.

FLOYD F. CHADWICK of F. E. Chadwick & Co., 1111 Land Title Building, Philadelphia, Pennsylvania, was born in Maryland and has been in the coal business twenty-three years. He was formerly with the Davis Coal & Coke Co., B. Nicoll & Co., and before launching in business for himself Eastern Manager of the Davis Colliery Co.

H. BARTHAM CORNOG, Vice President Cortright Coal Co., Pennsylvania Building, Philadelphia, Pennsylvania, was born in Westown, Pennsylvania, in 1879, and has been in the coal business for nineteen years. He was formerly with the Hutchinson Coal Co.

JAMES BINGHAM CORYELL, President James B. Coryell & Co., 1524 Chestnut St., Philadelphia, Pennsylvania, was born in Williamsport, Pennsylvania, September 4, 1856, and has been in the coal business for twenty-six years. He is also interested in the Mason Coal & Chemical Co. of West Virginia, and was formerly with the Cambria Coal Mining Co., Short Line Coal Co., and Cook Coal & Coke Co., all of West Virginia.

JOHN J. COYLE, President Bell Union Coal & Mining Co., 16th and Parkway, Philadelphia, Pennsylvania, was born in Pottsville, Pennsylvania, November 10, 1863, and has been in the coal business for six years. He is also a Director in the Pennsylvania Colliery Co., President of the Pennsylvania Mutual Life Insurance Co., and was a member of the House of Representatives of Pennsylvania, 1895-1894, and a Member of the Pennsylvania Senate 1895-1898.

JOHN M. CREAN of Crean Bros., well-known retail coal merchants of Philadelphia, Pennsylvania, was born in Philadelphia in 1857 and has been in the coal business sixteen years.

MAUICE J. CREAN of Crean Bros., Philadelphia, Pennsylvania, was born in Philadelphia in 1867 and has been in the coal business sixteen years. Mr. Crean has served as a Director of the Philadelphia Coal Exchange.

CHARLES EDWIN FERNBERG, General Sales Agent and Assistant Treasurer Thorne, Neale & Co., Philadelphia, Pennsylvania, was born in Philadelphia September 28, 1862, and has been in the coal business thirty-one years. He was formerly with Geo. W. Bush & Sons Co., Weston Dodson & Co., and Estate A. S. Van Wickle.

THOMAS FISHER, General Manager of the Berwind-White Coal Mining Co., Philadelphia, Pennsylvania, was born at Huntingdon, Pennsylvania, August 6, 1867, and has been in the coal business thirty-six years. He is also Vice President of the Berwind Fuel Co.

THEODORE B. FRYER, Secretary, Director and General Manager of Sales Pardee Bros. & Co., Drexel Building, Philadelphia, Pennsylvania, was born in Philadelphia, April 11, 1884, and has been in the coal business sixteen years.

G. RICHARDSON GABELL, Sales Manager and Director Thorne, Neale & Co., Philadelphia, Pennsylvania, was born in Burlington County, New Jersey, January 19, 1882, and has been in the coal business twenty-one years. He was formerly with the Davis Coal & Coke Co., and Hite & Rafetto.

ARNOLD GERSTELL, General Manager of Sales Percy Heilner & Son, Philadelphia, Pennsylvania, was born in Keyser, West Virginia, March 24, 1878, and has been in the coal business for twenty-one years. He is also interested in the Lynn Coal & Coke Co. and Davis Coal Mining Co., and was formerly with the Century Coal Co. and Davis Colliery Co.

WALTER C. HANCOCK of John C. Hancock & Co., Philadelphia, Pennsylvania, was born in Philadelphia, and has been in the coal business twenty-six years. He is a Director of the Coal Club of Philadelphia. John C. Hancock, senior member of the firm, organized the business in 1866 and is still active in the business of the company.

COAL MEN OF AMERICA

JOHN J. HASLETT, Manager National Fuel Co., Widener Building, Philadelphia, Pennsylvania, was born in Philadelphia June 15, 1878, and has been in the coal business for fourteen years. He was formerly with the Henderson Coal Co., Pittsburgh, Pennsylvania.

S. PEMBERTON HUTCHINSON, President Westmoreland Coal Co., 224 South Third Street, Philadelphia, Pennsylvania, was born in Philadelphia April 27, 1861. He attended St. Paul's School, Concord, New Hampshire, and was at the University of Pennsylvania two years. He entered the service of the Pennsylvania Railroad Co. as rodman Nov. 1, 1881; went through various grades in the Pennsylvania Railroad and was appointed Superintendent of the Lewistown Division Jan. 1, 1899, and Assistant General Agent at New York April 1, 1900. He resigned May 15, 1901, to become associated with Phelps-Dodge & Co. of New York in their railroad enterprise; resigned March 1, 1902, and was appointed Superintendent of the Pittsburgh Division of the Baltimore & Ohio Railroad March 9; resigned Nov. 30 to become Assistant General Superintendent of Michigan Central Railroad; appointed General Superintendent July 1, 1903; resigned Nov. 15, 1905, and became associated with the banking firm of Cramp, Mitchell & Shober of Philadelphia Sept. 1, 1906. He was elected President of the Westmoreland Coal Co. June 14, 1910, which position he now holds. Mr. Hutchinson is a Director in the Pennsylvania Company for Insurances on Lives and Granting Annuities, Farmers and Mechanics National Bank, Philadelphia National Bank, Stonega Coke & Coal Co., and Philadelphia Contributionship for the Insurance of Houses Against Loss by Fire, Manager of the Philadelphia Savings Fund Society, Trustee Penn Mutual Life Insurance Co., and a member of the Executive Council Philadelphia Board of Trade.

DAVID ISAACMAN, Keystone Coal & Wood Co., Philadelphia, Pennsylvania, was born in Philadelphia March 25, 1886, and has been in the coal business ten years.

W. ARTHUR JARDEN of W. A. Jarden & Co., Philadelphia, Pennsylvania, was born in Philadelphia in 1877, and has been in the coal business seventeen years.

JAMES M. KELLEY of M. Kelley's Sons, Poplar Street, Philadelphia, Pennsylvania, was born in Delaware County, Pennsylvania, July 25, 1856, and has been in the coal business forty-six years. Michael Kelley established the business in 1869. Mr. Kelley is Treasurer of the Philadelphia Coal Exchange.

W. KISHLAUGH, General Sales Agent Mill Creek Coal Co., Widener Building, Philadelphia, Pennsylvania, was born in Mauch Chunk, and has been in the coal business for thirty-seven years. He is also President of the Delano Coal Co.

ARTHUR KUPPINGER, Philadelphia, Pennsylvania, General Manager of Sales of the Valley Smokeless Coal Co., Niveah Coal & Coke Co., and Beccaria Coke Corp., was born in Philadelphia September 22, 1874, and has been engaged in the coal business fifteen years.

AMBROSE LETTER of Owen Letter's Sons, Philadelphia, Pennsylvania, was born in Philadelphia September 13, 1869, and has been in the coal business thirty-six years. He is a Director of the Philadelphia Coal Exchange.

HARRY A. LING is Secretary of the Imperial Coal Co., 1330 Widener Building, Philadelphia, Pennsylvania.

SAMUEL J. LIVINGSTON, Vice President and Treasurer The Rockhill Iron & Coal Co., Philadelphia, Pennsylvania, was born in Philadelphia December 22, 1879, and has been in the coal business seventeen years. He is also Secretary of the Union Improvement Co., Highland Coal Co. and Big Black Creek Improvement Co.

JOHN E. LLOYD, President William M. Lloyd Co., Philadelphia, Pennsylvania, was born in Philadelphia in 1878, and has been in the coal business eighteen years. He is President of the Philadelphia Coal Exchange and Resident Vice President of the National Retail Coal Merchants' Association. He is very popular and highly respected in the trade.

PERCY C. MADEIRA, President Madeira, Hill & Co., Philadelphia, Pennsylvania, was born in Philadelphia November 14, 1862, and has been in the coal business thirty-nine years. Mr. Madeira is also interested in about twenty other companies and was formerly with Percy C. Madeira & Co., afterwards Madeira, Hill & Co. He was President of Geo. B. Newton & Co. from 1899 to 1912. Mr. Madeira is a man of great executive ability and is well known throughout the trade.

FRANK B. MARRIOTT of Marriott Bros., Philadelphia, Pennsylvania, was born in Philadelphia January 22, 1873, and has been in the coal business twenty-nine years.

JAMES W. MASON, President Mason-Hepplin Coal Co. and Mason-Scholes Coal Co., Philadelphia, Pennsylvania, was born in Virginia December 17, 1869, and has been in the coal business twenty-six years. He was formerly with the Mason Coal Co. and the Geo. B. Newton Coal Co.

GEORGE GILBERT MATCHETT, Sales Agent Ayers & Bro., Philadelphia, Pennsylvania, was born January 27, 1864, and has been in the coal business seven years.

FRANK F. MATHERS, owner of J. W. Mathers & Sons and the Atlantic Fuel Co., Philadelphia, Pennsylvania, was born in Philadelphia September 25, 1867, and has been in the coal business thirty-four years.

HOWARD L. MEHICK, President Geo. W. Bailey Co., Philadelphia, Pennsylvania, was born in Philadelphia June 16, 1865, and has been in the coal business thirty-two years. He is also President of the Priscilla Coal Mining Co., South Fork, Pennsylvania.

GEORGE D. MILLER, Philadelphia, Pennsylvania, was born in Pennsylvania February 3, 1839, and has been in the retail coal business thirty-one years.

ROBERT J. MONTGOMERY, Vice President Philadelphia & Reading Coal & Iron Co., Philadelphia, Pennsylvania, was born in Philadelphia February 22, 1862, and has been in the coal business thirty-seven years. His business history has been one of a steady series of promotions in the company of which he is now Vice President. He was graduated from the Philadelphia High School in the spring of 1879 and the fall of that year found him at work for the Philadelphia & Reading Railroad at the shipping office at Port Richmond. In 1880 he took a position in the office of Thomas W. Richards, General Coal Agent of the Philadelphia & Reading Coal & Iron Co., became Chief Clerk in 1890, New York Sales Agent in 1904, General Coal Agent in 1907, and Vice President in 1916.

ROBERT V. PIERCE, Assistant Secretary The Lehigh Coal & Navigation Co., Philadelphia, Pennsylvania, was born in Philadelphia January 9, 1882, and has been in the coal business seventeen years.

WILLIAM CHARLES ROSS, Philadelphia, Pennsylvania, was born in Ireland in 1860, and has been in the coal business thirty-one years.

EDWIN F. SAXMAN, President Saxman Coal & Coke Co., Philadelphia, Pennsylvania, was born in Latrobe, Pennsylvania, and has been in the coal business thirty-one years. He was formerly with the Derry Coal & Coke Co., Sonman Shaft Coal Co., Pike Consolidated Coal Co., Connelville Basin Coke Co., Conemaugh Smokeless Coal Co. and Edensburg Coal Co.

HERMAN JOHN APPLE SMITH of Smith & Hoethaus, Philadelphia, Pennsylvania, was born in Philadelphia March 3, 1869, and has been in the coal business twenty-eight years. Mr. Smith started as bookkeeper with Markmann & Haeuser and now owns the company.

WILLIAM J. STEEN of Wm. J. Steen & Co., Philadelphia, Pennsylvania, has been in the coal business eighteen years. He is a Director in the Philadelphia Coal Exchange, the Coal Club of Philadelphia and the Rotary Club of Philadelphia. He is Vice President and Secretary of Caskey & Keen, manufacturers of heaters.

JOSEPH B. VAN DUSEN, deceased, was born in Philadelphia in 1815 and died in 1897. He was engaged in the coal business from 1832 to the time of his death. He was connected with The Lehigh Coal & Navigation Co., Robarts, Walton & Co., and organized the Van Dusen-Norton Co., Hammet, Van Dusen & Lochman, Van Dusen Bros., Van Dusen, Swain & Co., and in 1878 Van Dusen, Bro. & Co., in which firm he remained until his death, his sons succeeding him in the business.

LEON WALKER, Secretary, Treasurer and General Manager Stineman Coal Mining Co., Philadelphia, Pennsylvania, was born in Wilmington, Delaware, May 4, 1878, and has been in the coal business twenty-four years. He is also Secretary, Treasurer and General Manager of the Hamilton Coal Co. of Wilmington, Delaware. He was formerly with the Puritan Coal Mining Co. and John C. Martin.

RAYMOND Y. WARNER, Treasurer Geo. B. Newton Coal Co., was born in Penns Manor, Pennsylvania, September 23, 1873, and has been in the coal business twenty-six years. He is Treasurer of B. Rowland & Bro., Frankford, Pennsylvania, and of the Newton Supply Co., Philadelphia, and also acts as Purchasing Agent for both B. Rowland & Bro. and the Geo. B. Newton Coal Co.

HOWARD B. YEARSLEY, Secretary Westmoreland Coal Co., Philadelphia, Pennsylvania, was born in Coatesville, Pennsylvania, June 27, 1869, and has been in the coal business thirty-one years.

JOHN M. YOUNG, Assistant Sales Manager Madeira, Hill & Co., Philadelphia, Pennsylvania, was born in Philadelphia January 28, 1879, and has been in the coal business eleven years. He was formerly connected with The Lehigh Coal & Navigation Co., Ayers & Bro. and H. H. Lineaweaver & Co.

COAL MEN OF AMERICA

PENNSYLVANIA—Pittsburgh

J. HARPER ADAMS, Secretary and Treasurer Tri-State Coal & Coke Co., Pittsburgh, Pennsylvania, was born in Clinton, Pennsylvania, December 21, 1860, and has been in the coal business twenty-six years. He was formerly Auditor of the Imperial Coal Co., Empire Coal Mining Co. and Moreland Coke Co.

S. N. HORNEY, President Bixler Coal & Coke Co., Pittsburgh, Pennsylvania, was born in Hopedale, Ohio, December 13, 1880, and has been in the coal business fourteen years.

ALBERT H. HUDD, Vice President and General Manager Diamond Coal & Coke Co., Pittsburgh, Pennsylvania, and President A. R. Budd Coal Co., was born in Cincinnati, Ohio, in January, 1878, and has been in the coal business twenty-three years. He was formerly General Manager of Blaine Coal Co.

ROBERT HUKA, District Manager The Valley Camp Coal Co., Pittsburgh, Pennsylvania, was born in Pittsburgh November 2, 1887, and has been in the coal business twelve years. He was formerly with the Pittsburgh-Buffalo Co.

WALTER RENTON CALVERLEY, General Manager Union Collieries Co., Pittsburgh, Pennsylvania, was born in Leeds, England, October 1, 1862, and has been in the coal business forty-eight years. He is also President and General Manager of the Central Youghiogheny Coal Co. He was formerly with the Ellsworth Colliery Co., Pittsburgh Coal Co. and the Berwind-White Mining Co.

H. CHICHESTER, Secretary and Treasurer Pittsburgh & Bessemer Coal Co., Pittsburgh, Pennsylvania, was born in Romney, West Virginia, May 6, 1880, and has been in the coal business eleven years. He is also Secretary and Treasurer of the South Pittsburgh Coal & Supply Co.

HOLMES A. DAVIS, President and Treasurer Canonsburg Gas Coal Co., Pittsburgh, Pennsylvania, was born in Dubois, Pennsylvania, January 2, 1885, and has been in the coal business twelve years. He is also President of the West Pennsylvania Coke Co., the Luzerne Coal & Coke Co., the Canonsburg Gas Coal Co. and the Country Club Coal Co. and General Manager of the Warner-Youghiogheny Coal Co. and of the Charleroi Gas Coal Co. He was formerly with the Pittsburgh Gas Coal Co., Hester Coke Co., Brownsville Coke Co. and Belle Vernon Coke Co.

JOHN C. DAVIS, Secretary, Treasurer and Manager Paul Coal & Supply Co., Pittsburgh, Pennsylvania, was born in Hubbard, Ohio, February 12, 1871, and has been in the coal business seventeen years. He was formerly with the Youghiogheny & Ohio Coal Co.

THOMAS S. DUNCAN, Purchasing Agent H. C. Frick Coke Co., Pittsburgh, Pennsylvania, was born in Pittsburgh February 20, 1868, and has been in the coal business sixteen years. He is also interested in the United States Coal & Coke Co. and the National Mining Co.

R. O. DUNNE, President Dunne Coal & Coke Co., Pittsburgh, Pennsylvania, has been in the coal business all his life and is a very well known and highly respected coalman.

JOHN WILFRED ELY, Treasurer Dunne Coal & Coke Co. and Sales Manager Union Fuel Co., Pittsburgh, Pennsylvania, was born in Wellsboro, Pennsylvania, February 27, 1889, and has been in the coal business five years.

JOHN KENNEDY EWING, JR., Pittsburgh, Pennsylvania, was born in Uniontown, Pennsylvania, November 24, 1855, and has been in the coal business thirty-one years. He was previously with the Pittsburgh Block Coal Co.

WALTER J. FLANAGAN of the W. J. Flanagan Co., Pittsburgh, Pennsylvania, was born in West Jefferson, Ohio, April 10, 1871, and has been in the coal business nineteen years.

JOHN F. FLOOD, Manager Pittsburgh Coal Co., Youghiogheny Coal Department, Pittsburgh, Pennsylvania, was born in Pittsburgh August 20, 1878, and has been in the coal business twenty-three years.

GEORGE W. FOHNEY, Sales Manager Poland Coal Co., Pittsburgh, Pennsylvania, was born June 16, 1885, in Enon Valley, Pennsylvania, and has been in the coal business thirteen years. He was formerly with the Pickands-Magee Co.

JAMES G. GEGAN, General Manager and Secretary Clyde Coal Co., Pittsburgh, Pennsylvania, was born in Pittsburgh December 27, 1872, and has been in the coal business twenty-eight years. He is a Director of the Pittsburgh Coal Exchange.

MILTON M. GRIEST, President Bess Etta Coal Co. and Pittsburgh-Cambridge Coal Co., Pittsburgh, Pennsylvania, was born in Zanesville, Ohio, December 2, 1884, and has been in the coal business ten years. He was formerly with the Carnegie Coal Co.

E. M. GROSS, Western Manager Keystone Coal & Coke Co., Pittsburgh, Pennsylvania, has been in the coal business thirty-one years. He is also President of the Delmont Gas Coal Co. and Secretary of the Latrobe-Connellsville Coal & Coke Co.

HIRAM HARRIS, Secretary and Treasurer Springer Coal Co., Pittsburgh, Pennsylvania, was born in Pittsburgh July 27, 1879, and has been in the coal business four years. He was formerly with the Bessemer Coke Co. and Secretary of the Pitt Gas Coal Co.

EUGENE PHANK HARTLAND, General Sales Agent Commonwealth Fuel Co., Pittsburgh, Pennsylvania, was born in Wilkes-Barre, Pennsylvania, August 16, 1876, and has been in the coal business nineteen years. He was formerly with the Lehigh & Wilkes-Barre Coal Co., Susquehanna Coal Co., Pittsburgh-Westmoreland Coal Co. and Kilbuck Coal Co.

THOMAS R. HEYWARD, JR., of Thomas R. Heyward Co., Pittsburgh, Pennsylvania, was born on a rice plantation in South Carolina February 15, 1881, and has been interested in the coal business for about five years.

N. P. HYNDMAN, Sales Agent Washington Coal & Coke Co., Pittsburgh, Pennsylvania, was born in Mauch Chunk, Pennsylvania, May 10, 1849, and has been in the coal business for over fifty years. He was formerly with the Lehigh Coal & Navigation Co. and the Connellsville Coke & Iron Co.

ELLIOTT KELLER of Keller Bros., Pittsburgh, Pennsylvania, was born in Pennsylvania and has been in the coal business twenty-four years.

F. C. KELLER of Keller Bros., Pittsburgh, Pennsylvania, was born in Pennsylvania and has been in the coal business twenty-four years.

DELMONT JONES KENNEDY, President Bulger Block Coal Co., Pittsburgh, Pennsylvania, was born in Pittsburgh and has been in the coal business thirty-eight years.

GEORGE B. LITTLE, Secretary and Treasurer Superba Coal & Coke Co., Pittsburgh, Pennsylvania, was born October 2, 1892, in Pittsburgh. He was formerly connected with the J. H. Hillman & Son Co. and the American Steel Co.

WALTER A. MARSH, General Sales Manager Pittsburgh Coal Co., Pittsburgh, Pennsylvania, was born in Pittsburgh May 7, 1874, and has been in the coal business twenty-nine years. He was formerly with the F. L. Robbins' interests.

E. L. MORRIS, General Superintendent United Coal Co., Pittsburgh, Pennsylvania, was born in Clarksburg, West Virginia, and has been in the coal business twenty-six years. He is interested in the Hysylvania Coal Co. of Ohio. He was formerly with the Monongahela River Consolidated Coal & Coke Co. and the Pittsburgh Coal Co.

FRED J. MULHOLLAND, Sales Manager Clyde Coal Co., Pittsburgh, Pennsylvania, was born in Carey, Ohio, April 30, 1877, and has been in the coal business seventeen years. He is interested in a retail coal yard at Pittsburgh. He was formerly connected with the W. J. Hamilton Coal Co., W. A. Gosline & Co., New Pittsburgh Coal Co. and Pittsburgh Coal Co.

FRED E. NOW, Purchasing Agent Pittsburgh Coal Co., Pittsburgh, Pennsylvania, was born in Marietta, Ohio, July 4, 1859, and has been in the coal business twenty-six years.

WILLIAM K. RICHARDS, President Richards Coal Co., Pittsburgh, Pennsylvania, was born in Columbus, Ohio, and has been in the coal business sixteen years. He was formerly with the Monongahela River Consolidated Coal & Coke Co.

WILLIAM H. SHINN, Treasurer and General Manager W. H. Shinn Coal Co., Pittsburgh, Pennsylvania, was born in Allegheny, Pennsylvania, in August, 1863, and has been in the coal business thirty years. He was formerly with the Mansfield Coal & Coke Co. and the Pittsburgh Coal Co.

WILLIAM HENRY SIMMONS of W. H. Simmons & Co., Pittsburgh, Pennsylvania, was born in Cornwallis, West Virginia, March 30, 1866, and has been in the coal business twenty-eight years. He was formerly with M. A. Hanna & Co., Cleveland.

ALEXANDER C. SPEYER, Treasurer and General Manager Moreland Coke Co., Pittsburgh, Pennsylvania, was born in Wheeling, West Virginia, and has been in the coal business sixteen years. Mr. Speyer has numerous other coal interests.

JOEL T. M. STONEROD, Secretary and Treasurer Carnegie Coal Co., Pittsburgh, Pennsylvania, was born in Dunbar, Pennsylvania, in May, 1865, and has been in the coal business seventeen years. He is also interested in the Carnegie Dock & Fuel Co. and is well known throughout the trade.

E. SUNSTEIN, President Moreland Coke Co., Pittsburgh, Pennsylvania, was born in Pittsburgh and in his sixteen years in the coal and coke business has always been connected with his present company.

ARTHUR F. SVROTJ, Pittsburgh, Pennsylvania, Assistant Sales Agent Keystone Coal & Coke Co., was born in Pittsburgh in 1888, and has been in the coal business eleven years. He is also Sales Agent of the Delmont Gas Coal Co. and the Latrobe-Connellsville Coal & Coke Co. He was formerly with the Globe Coal & Coke Co. and the Western Coal Co.

COAL MEN OF AMERICA

SAMUEL ALFRED TAYLOR, President Creacent Coal Co., Domestic Coal Co., and Taylor Collieries Co., Pittsburgh, Pennsylvania, was born in Allegheny County, Pennsylvania, October 24, 1863, and has been in the coal business forty-four years. Mr. Taylor is an expert mining engineer and has numerous mining interests.

JAMES P. WALSH, Vice President Pittsburg Coal Co., Pittsburgh, Pennsylvania, was born in Cleveland, Ohio, and has been in the coal business for thirty-six years. He was formerly with the Walsh-Upstill Coal Co.

PENNSYLVANIA—Reading

MILLER CUSTER AMMON of Ammon & Bro., Reading, Pennsylvania, was born in Reading September 3, 1867, and has been in the retail coal business for twenty-two years. He was with the Farmers National Bank of Reading for fourteen years.

FRANK J. BOYER, President Warala Coal Co., Reading, Pennsylvania, was born in Shartlesville, Pennsylvania, April 19, 1862, and has been in the operating end of the coal business sixteen years.

CARL BURKHOLDER, Reading, Pennsylvania, a salesman for Percy Hellner & Son, Philadelphia, was born in Reading in 1892, and has been in the coal business for seven years.

LOYAL BURKHOLDER, Reading, Pennsylvania, Reading Manager for Percy Heilner & Son, Philadelphia, was born in Reading in 1876 and has been in the coal business for twenty-one years.

JOSEPH W. HOLMES of J. W. Holmes & Co., Reading, Pennsylvania, was born in Reading November 27, 1859, and has been in the retail coal business for ten years.

MILTON A. KOLLER, Reading, Pennsylvania, was born in Shoemakersville, Pennsylvania, March 10, 1850, and has been in the retail coal business for twenty years. He was formerly with Farming & Nulling.

ARTHUR RICK, Reading, Pennsylvania, was born in Reading December 22, 1878, and has been in the coal business for eleven years. Previously he was with Hutchison & McCandlish and the Hutchison-McCandlish Coal Co.

SAMUEL F. SMEDLEY, a salesman for the Philadelphia & Reading Coal & Iron Co., Reading, Pennsylvania, was born in Philadelphia and has been in the coal business for eleven years. He was previously with the Vinton Colliery Co.

WILLIAM T. SNYDER, Reading, Pennsylvania, was born in Reading December 3, 1858, and has been in the retail coal business for twenty-nine years. He was Manager for H. E. Ahrens, whom he succeeded. He was the first President of the Pennsylvania Retail Coal Merchants Association and is now Secretary of the Retail Coal Dealers Association of Reading.

JOHN ARTHUR STRUNK, Reading, Pennsylvania, was born in Reading April 13, 1873, and has been in the retail coal business for twenty-three years. The firm of J. M. Strunk's Son was established by his father, John M. Strunk, in 1869. He is Treasurer of the Pennsylvania Retail Coal Merchants' Association.

PENNSYLVANIA—Scranton

FRANK P. BENJAMIN, Scranton Life Insurance Building, Scranton, Pennsylvania, President Mendon Hill Coal Co. and Trustee South Side Coal Co., was born in Peckville, Pennsylvania, June 17, 1876, and has been in the coal business for five years.

DAVID BOIES, 600 Clay Ave., Scranton, Pennsylvania, President Racket Brook Coal Co. and President Nay Aug Coal Co., was born in Scranton, Pennsylvania, in 1881, and has been in the coal business for some years. He is also interested in mine operations in West Virginia.

WILLIAM DE WILD BOYER, Scranton, Pennsylvania, President The Fentress Coal Co. and President Piney Mining Co., was born in Port Clinton, Pennsylvania, May 28, 1867, and has been in the coal business for eighteen years. He is also connected with the Blue Creek Coal & Land Co. and the Meadow River Coal & Land Co. and was formerly connected with the Piney Coal & Coke Co.

CHARLES E. BRADHURY, Secretary and Treasurer Elk Brook Coal Co., Connell Building, Scranton, Pennsylvania, was born in Mount Morris, New York, July 16, 1849, and has been in the coal business sixteen years. He was formerly with the Nay Aug Coal Co.

FRANK P. CHRISTIAN, Scranton, Pennsylvania, President, Treasurer and General Manager Peoples Coal Co., Oxford Colliery, was born in Oswego, New York, June 14, 1865, and has been in the coal business for twenty-six years. He was formerly with the Clearview Coal Co. and Blue Ridge Coal Co.

W. L. CONNELL, Scranton, Pennsylvania, President-General Manager Green Ridge Coal Co., The Enterprise Coal Co. and Connell Anthracite Coal Co., was born in Scranton, Pennsylvania, in 1862, and has been in the coal business for twenty-eight years.

CHARLES DORRANCE, General Manager The Hudson Coal Co., Scranton, Pennsylvania, was born in Meadville, Pennsylvania, March 12, 1883, and has been in the coal business for eleven years. He was formerly with the Lehigh Valley Coal Co., Lehigh Coal & Navigation Co. and Harwood Coal Co.

GEORGE W. ENGEL, Scranton, Pennsylvania, Chief Mining Engineer of the Temple Coal Co., Lackawanna Coal Co., Ltd., Mt. Lookout Coal Co., and Winton Coal Co., was born in Ashland, Pennsylvania, February 22, 1865, and has been in the coal business twenty-six years. He was formerly connected with the Locust Mountain Coal Co., Lehigh Coal & Navigation Co., Hudson Coal Co. and Clark Tunnel Coal Co.

OTTO C. EPP, Secretary-Treasurer Westlake Coal Co., Scranton, Pennsylvania, was born in Scranton November 28, 1887, and has been in the coal business for five years.

JAMES K. GEARHART, President Arkansas Anthracite Coal & Land Co., Scranton, Pennsylvania, was born in Scranton May 20, 1876, and has been in the coal business eleven years. He is also President of the Fernwood Mining Co.

W. H. GEARHART, Secretary-Treasurer Arkansas Anthracite Coal & Land Co., Scranton, Pennsylvania, was born in Northumberland County, Pennsylvania, December 8, 1839, and has been in the coal business thirty-six years. He is also interested in the Clear Spring Coal Co. and the Enterprise Coal Co. in the Pennsylvania anthracite fields. Mr. Gearhart is a well known coal man.

GEORGE HEIM, President Helm-James Coal Co., Scranton, Pennsylvania, was born in Waterloo, Pennsylvania, June 11, 1863, and has been in the coal business for six years. He is also interested in the Smokeless Anthracite Coal Co.

FRANK H. HEMELRIGHT, Vice President and General Manager Temple Coal Co., Scranton, Pennsylvania, was born in Beaumont, Pennsylvania, September 4, 1870, and has been in the coal business for thirty-seven years. He is also interested in the Lackawanna Coal Co., Ltd., The Lookout Coal Co., Forty Fort Coal Co. and the Edgerton Coal Co.

H. W. HOWARD, President The Howard Anthracite Coal Co., 704 Connell Building, Scranton, Pennsylvania, was born in Sturgis, Michigan, December 11, 1871, and has been connected with the coal industry for the past twelve years.

GEORGE F. HOWER of Hower & Stender, 1703 Madison Ave., Scranton, Pennsylvania, was born in Scranton November 26, 1865, and has handled coal for some years.

WILLIAM W. INGLIS, Vice President and Manager Delaware, Lackawanna & Western Railroad Co., Coal Mining Department, Scranton, Pennsylvania, was born in Scranton January 19, 1871, and has been in the coal business thirty-four years. He was previously connected with the Hillside Coal & Iron Co., N. Y., S. & W. Coal Co. and Pennsylvania Coal Co.

WILLIAM PAUL JENNINGS, 421 Arthur Avenue, Scranton, Pennsylvania, General Superintendent Pennsylvania Coal Co., was born in Great Britain in 1874 and has been in the coal business for thirty-one years.

JOSEPH J. JERMYN of Jermyn & Co., Scranton, Pennsylvania, was born in Scranton in 1852, and has been in the coal business all his life, succeeding his father, John Jermyn, who died in 1902.

EDWARD S. JONES, President Blue Creek Coal & Land Co. and Vice President Meadow Coal & Land Co., Scranton, Pennsylvania, was born in Blakely, Pennsylvania, December 22, 1864, and has been in the coal business twenty-six years. He was formerly connected with Jones, Simpson & Co., Pierce Coal Co., Clear Spring Coal Co. and Raymond Coal Co. Mr. Jones was President of the Kanawha & West Virginia Railroad until it was sold to the New York Central, and has been prominent in several banks.

JAMES KEARNEY, President The James Kearney Co., Scranton, Pennsylvania, was born in Scranton May 15, 1871, and has been in the coal business for thirty-one years.

JOHN W. KIRBY, 1702 Monroe Avenue, Scranton, Pennsylvania, Vice President Quinn Coal Co., was born in Scranton January 12, 1873, and has been in the coal business for eleven years. He was formerly with Peale, Peacock & Kerr and the Clinton Falls Coal Co.

FREDERICK L. MOORE, Mechanical Engineer of the Scranton Coal Co., Scranton, Pennsylvania, was born in Scranton in 1883, and has been in the coal business for eighteen years.

COAL MEN OF AMERICA

MICHAEL J. RAFFERTY, Secretary and General Manager Scranton Anthracite Coal Co., Scranton, Pennsylvania, was born in Scranton October 8, 1874, and has been in the coal business eleven years. He was formerly with the Milnooka Coal Co.

CHARLES EDWARD ROBERTSON, 831 Connell Building, Scranton, Pennsylvania, was born in Scranton February 11, 1876, and has been in the coal business for three years.

WALTER LINCOLN SCHLAGER, Scranton, Pennsylvania, General Manager Traders Coal Co. and Plymouth Red Ash Coal Co., was born in Scranton October 1, 1864, and has been in the coal business for about nineteen years.

SAMUEL H. SEVINGLE, Treasurer Plymouth Red Ash Coal Co., Scranton, Pennsylvania, was born in South Canaan, Pennsylvania, February 17, 1872, and has been in the coal business for six years.

HOWARD A. STELLE, Scranton, Pennsylvania, was born in Paterson, New Jersey, in 1870, and has been in the coal business eleven years. He is also interested in the Traders Coal Co.

FRANK G. WOLFE, Chief Engineer Scranton Coal Co., Scranton, Pennsylvania, was born in Stroudsburg, Pennsylvania, April 21, 1860, and has been in the coal business since 1877. He was formerly with the Delaware, Lackawanna & Western Railroad.

PENNSYLVANIA—Uniontown

J. W. ABRAHAM, General Manager Banning-Connellsville Coke Co., Wineland-Gilmore Coal & Coke Co., Newcomer Coke Co., and the South Fayette Coke Co., Uniontown, Pennsylvania, was born in Smithfield, Pennsylvania, October 15, 1866, and has been in the coal business for twenty-five years. He was previously with the H. C. Frick Coke Co.

WILLIAM ALLISON, Secretary-Treasurer and Manager Union Connellsville Coke Co., and a Director Waltersburg Coke Co., Uniontown, Pennsylvania, was born in Greensburg, Pennsylvania, October 10, 1858, and has been in the coal business sixteen years.

JAMES G. BINNS, Treasurer and General Manager of the Buckhannon River Coal Co., Uniontown, Pennsylvania, was born in Fayette City, Pennsylvania, August 8, 1881, and has been in the coal business two years.

MARSHALL D. BROOKE of the Smock Coal Co., Uniontown, Pennsylvania, also interested in the Buckhannon River Coal Co., was born in Uniontown November 21, 1890, and has been in the coal business for six years. He is Secretary of the Coke Producers Association, Connellsville region.

JAMES R. CRAY, President Union Connellsville Coke Co. and Puritan Coal Co., Uniontown, Pennsylvania, was born in Darlington, Pennsylvania, March 8, 1860, and has been in the coal business twenty years. He is also President of the Indian Creek Valley Railway Co., a Director in the Wallace Coal & Coke Co., and Vice President of the Coke Producers Association of the Connellsville Coke Region.

A. Q. DAVIS, President Browning Coke Co., Uniontown, Pennsylvania, and President Davis Fuel Co. and General Manager Hess Coal Co., Morgantown, West Virginia, was born in Lafayette County, Pennsylvania, in 1875, and has been in the coal business eighteen years. He was previously with the American Steel & Wire Co. and the H. C. Frick Coke Co.

GUY B. GILMORE, General Manager of the Gilmore Coke Co., the Plumer Coke Co. and the Menallen Coke Co., Uniontown, Pennsylvania, was born in Uniontown September 14, 1876, and has been in the coal business eighteen years. He was previously with the Frick Coke Co., the Stonega Coke Co., and the Producers Coke Co., all of the Connellsville District.

JAMES EDGAR HUSTEAD, Secretary and Treasurer of the Hustead-Semans Coal & Coke Co., the Hope Coke Co., and South Fayette Coke Co., Uniontown, Pennsylvania, was born in Dunbar, Pennsylvania, November 6, 1880, and has been in the coal business for fifteen years.

THOMAS W. KEIGHLEY, Superintendent of the coal mines and coke works of the Stewart Iron Co., Uniontown, Pennsylvania, was born in Youngstown, Pennsylvania, July 15, 1882, and has been in the coal business for fourteen years. He was formerly Superintendent of mines and coke works for the Shenango Furnace Co., Ligonier, Pennsylvania.

JOHN W. SIMPSON, Manager Evans Coal & Coke Co., Uniontown, Pennsylvania, was born in Lawrence County, Ohio, December 5, 1875, and has worked in and about mines since his early boyhood. He was formerly with the Wheeling & Lake Erie Coal Co., Beech Bottom Coal Co. and Stauffer-Quemahoning Coal Co.

LLOYD H. SMITH, Sales Manager for the Arden Fuel Co., Uniontown, Pennsylvania, was born in Mt. Pleasant, Pennsylvania, March 8, 1867, and has been in the coal business for seventeen years. He was previously with the Harris-Smith Coal & Coke Co.

JOSIAH V. THOMPSON, President of the Tower Hill-Connellsville Coke Co., Uniontown, Pennsylvania, also interested in the Thompson Connellsville Coke Co., and the Richhill Coal & Coke Co., was born in Uniontown February 15, 1854, and has been in the coal business for forty years.

PENNSYLVANIA—Wilkes-Barre

DAVID T. DAVIS, Wilkes-Barre, Pennsylvania, State Inspector of Mines for Pennsylvania, was born in Pottsville, Pennsylvania, in 1867, and has held various positions with the anthracite collieries for forty years. He attended Wyoming Seminary and is considered an authority on coal mining matters.

JOHN C. HADDOCK, Treasurer and Purchasing Agent for the Haddock Mining Co., Wilkes-Barre, Pennsylvania, also Manager of the Wilkes-Barre branch of the Alden Coal Mining Co., was born in New York City November 24, 1893, and has been in the coal business for about three years.

JOHN COURTNEY HADDOCK, JR., of Haddock & Payne, and Treasurer of the Haddock Mining Co. and the Haddock Coal Sales Co., Wilkes-Barre, Pennsylvania, was born in New York City November 24, 1893, and has been in the coal business three years.

JOHN MILTON HEMPHREY, Wilkes-Barre, Pennsylvania, Chief Engineer of the Lehigh Valley Coal Co., also a Director of the E. E. White Coal Co., Glen White, West Virginia, was born in Philadelphia December 25, 1866, and has been in the coal business for twenty-seven years.

GEORGE F. LEE, General Manager and Treasurer of the George F. Lee Coal Co., Wilkes-Barre, Pennsylvania, was born in Plymouth, Pennsylvania, in 1870, and has been engaged in the mining and shipping of Red Ash anthracite sixteen years. This company maintains an office in the McGill Building, Montreal, Quebec, to care for its Canadian shipments.

BRUCE PAYNE of Haddock & Payne, Wilkes-Barre, Pennsylvania, also interested in the Blue Creek Coal & Land Co., Charleston, West Virginia, was born in Kingston, Pennsylvania, April 27, 1889.

PAUL STERLING, Wilkes-Barre, Pennsylvania, Mechanical Engineer of the Lehigh Valley Coal Co., was born in Wilkes-Barre, and has been in the coal business eighteen years.

THOMAS J. WILLIAMS, Wilkes-Barre, Pennsylvania, Inspector of Mines for Pennsylvania, was born in Wales in 1850, and has been in the coal business for forty-seven years. Previously he was with the Delaware, Lackawanna & Western Coal Co., the Lehigh Valley Coal Co. and the T. M. Dodson Coal Co.

FREDEMIC EDGAR ZERBEV, Wilkes-Barre, Pennsylvania, is General Manager of the Kingston Coal Co.

PENNSYLVANIA

SHERWOOD L. ANDERSON, Manager S. L. Anderson & Co., Easton, Pennsylvania, was born in Bloomsbury, New Jersey, January 31, 1882, and has been in the coal business ten years.

JAMES H. ALLPORT, Barnesboro, Pennsylvania, President Rich Hill Coal Co., was born in Philipsburg, Pennsylvania, April 13, 1874, and has been in the coal business a quarter of a century.

ARTHUR C. AMESBURY, retail coal merchant of Danville, Pennsylvania, was born in Danville March 21, 1873, and has been in the coal business for a quarter of a century.

STEPHEN FRANKLIN ARNOLD, sole owner of the Royal Coal Yard, Lebanon, Pennsylvania, was born in Annville, Pennsylvania, November 10, 1861, and has been in the coal business for thirteen years.

E. Y. BARNES, Yardley, Pennsylvania, was born in Richmond, Indiana, August 25, 1870, and has been in the retail coal business for four years.

H. K. BAUMGARDNER, President and Treasurer of the B. B. Martin Co., Lancaster, Pennsylvania, was born in Lancaster January 29, 1841, and has been in the retail coal business for thirty years.

L. L. BEACHY, Treasurer and Manager of the Tub Mill Coal Co., West Salisbury, Pennsylvania, was born in West Salisbury January 1, 1864, and has been in the coal business thirty-one years.

COAL MEN OF AMERICA

ROBERT HARCLAY BEAHM, Sharon Hill, Pennsylvania, President Beahm & Co., Inc., Philadelphia, was born in Mauch Chunk, Pennsylvania, in 1853, and has been engaged forty years in various lines in the coal business. He is also President of The Mt. Hope Coal Co., a Director of the Manufacturers Coal Co., Bellefonte, Pennsylvania, and of the Garrett County Coal & Mining Co. He was formerly General Sales Manager for Weston Dodson & Co., holding that position for twenty years. He is a member of the Union League of Philadelphia.

JAMES FIFE BEATTIE, President of the Beattie Mining Co., Fairmount City, Pennsylvania, was born in Scotland in October, 1852, and since ten years of age has been employed in some capacity in the coal industry. For eleven years he was Superintendent of Mines for the Cambria Steel Co., Johnstown, Pennsylvania; three years with the Shawmut Mining Co., St. Mary's, Pennsylvania, and fourteen years in Texas and Alabama.

JOHN A. BELL, President Carnegie Coal Co., Carnegie, Pennsylvania, was born in Carnegie in 1855 and has been in the coal business seventeen years. Mr. Bell is also interested in the Carnegie Dock & Fuel Co. He has been a Director of the Pittsburgh Coal Co.

ELMER J. BENDER, Treasurer and Manager Lehigh Coal Co., Bethlehem, Pennsylvania, was born in Bethlehem August 28, 1873, and has been in the coal business nine years. Mr. Bender was previously with the Lehigh Valley Coal Co. and Weston Dodson & Co.

CHARLES A. BESWICK, Manager C. A. Beswick Coal Co., Altoona, Pennsylvania, was born in Paterson, New Jersey, November 21, 1870, and has been in the coal business twelve years. He is also interested in the Junlata Coal Mining Co. Mr. Beswick was formerly connected with the Henrietta Coal Mining Co.

FRED G. BETTS, President and General Manager Goshen Coal Co., Clearfield, Pennsylvania, was born in Clearfield April 11, 1869, and has been in the coal business twenty-two years. Mr. Betts is also President of the Janesville Coal Co. He was formerly with the Madeira-Hill Coal Mining Co.

WILLIAM I. BETTS, General Manager Conestoga Coal Co., Clearfield, Pennsylvania, was born in Clearfield June 3, 1870, and has been in the coal business a quarter of a century. He was formerly with the Summit Coal Mining Co. and the Madeira-Hill Mining Co.

JOHN NELSON BEVERIDGE, Secretary and Manager United Coal Co., Clarion, Pennsylvania, is a native of Scotland, born in 1875, and has been actively engaged in the coal industry since he was twelve years of age. Mr. Beveridge is also interested in the Co-operative Coal Co., Ells Coal Co. and Beveridge-Herman Coal Co. He was formerly with the Harvey Coal Co. and the Beveridge & Harvey Coal Co.

DAVID BLAIR, President of the Blair Coal Co., Indiana, Pennsylvania, was born in Indiana April 25, 1872, and has been in the coal business for ten years.

JAMES S. BLAIR, Treasurer of the Blair Coal Co., Indiana, Pennsylvania, was born in Indiana in 1870, and has been in the coal business for two years.

WALTER STILSON BLAISDELL, Punxsutawney, Pennsylvania, Secretary, Treasurer and Manager of the Anita Coal Mining Co., Williams Run Coal Co., and Punxsutawney Coal Mining Co., was born in Newcomb, Illinois, May 21, 1866, and has been in the coal business fourteen years.

WILLIAM L. BOENING, President and General Manager of the Tobyhanna Co., Tobyhanna, Pennsylvania, was born in Germany September 20, 1872, and has been in the coal business for thirteen years. He was with the Delaware, Lackawanna & Western Coal Co. for two years in New York City.

EDGAR D. BOITNER, Hanover, Pennsylvania, was born in Hanover April 10, 1865, and has been in the coal business for five years.

FRANK G. BOYER, Millersburg, Pennsylvania, was born in Washington August 7, 1872, and has been in the retail coal business for seven years.

GEO. E. BOYD, General Manager of the Geo. E. Boyd Coal Co., Tarentum, Pennsylvania, was born in Tarentum in 1870, and has been in the coal business for twenty-seven years. He was previously with the McKean Coal Co. and Boyd Bros. Coal Co.

EDWARD F. BRACKEN, Paoli, Pennsylvania, was born in Colerain, Ohio, March 14, 1870, and has been in the retail coal business for twenty-three years. He was previously with Henry Hall, Dewees & Bracken.

JOHN J. BRADLEY of the J. J. Bradley Co., Gallitzen, Pennsylvania, was born in Gallitzen in September, 1895, and has been in the coal business about two years.

CHARLES Y. BROUGH of the Schmuck Co., Hanover, Pennsylvania, was born in Hanover in 1881, and has been in the coal business for five years.

CHARLES D. BROWN, retail coal merchant of Emaus, Pennsylvania, was born in Lehigh County, Pennsylvania, April 10, 1847, and has been in the coal business twenty-eight years. He has held various offices of honor and trust in his community.

CHARLES E. BROWN, General Manager of the Cheston Coal Co., Hastings, Pennsylvania, was born in Henschletown, Pennsylvania, on August 12, 1877, and has been in the coal business for himself for four years. He was previously with the Coal Run Coal Co., Red Top Coal Co., and Rich Hill Coal Co. as Foreman.

JAMES M. BROWN, with A. C. Thorpe Co., Chester, Pennsylvania, was born in Chester September 15, 1889, and has been in the coal business eleven years. Mr. Brown was formerly connected with Tyler & Co.

GUY WATSON BROWN, Treasurer of Gillespie Coal Co., Fayette City, Pennsylvania, was born near Fayette City, and has been in the coal business since 1914.

MAX J. BUCHER, Manager Columbia Coal & Ice Co., Columbia, Pennsylvania, was born in Columbia September 6, 1875, and has been in the coal business thirteen years.

R. S. BURCHINAL, General Manager and Treasurer of the Smithfield Coal & Coke Co., Smithfield, Pennsylvania, was born in Pennsylvania in June, 1865, and has been in the coal business for fourteen years.

THOMAS J. BURKE, Secretary and Treasurer of the Sharon Coal & Ice Co., Sharon, Pennsylvania, was born in Staunton, Virginia, and has been in the retail coal business for two years.

JOHN J. BUTTERMORE, President Pittsmtont Coal Co., Connellsville, Pennsylvania, was born in Connellsville August 17, 1857, and has been identified with the coal business ten years. Mr. Buttermore is also President of the J. J. Buttermore Coal Co. and the Catawba Coal Co.

DAVID G. BYERLY of D. G. Byerly & Son, Glenmoore, Pennsylvania, was born in Glenmoore December 27, 1860, and has been in the coal business for twenty-three years.

HARVEY W. CALHOON of the H. W. Calhoon Coal Co., New Brighton, Pennsylvania, was born in New Brighton May 17, 1869, and has been in the retail coal business for fifteen years.

JOSEPH ALFRED CAMERON, SR., Manager Easton Coal & Supply Co., Easton, Pennsylvania, was born in Easton September 12, 1865, and has been in the coal business since 1913.

GEORGE W. CAMPBELL, Manager Etna Connellsville Coke Co., Connellsville, Pennsylvania, was born in Normalville, Pennsylvania, in 1853, and has been in the coal business eleven years. Mr. Campbell is also a Director of the Northern Connellsville Coke Co. and owns coal lands in West Virginia and Pennsylvania coal fields.

A. K. CAROTHERS, Williamsport, Pennsylvania, was born in Williamsport October 5, 1839, and has been in the retail coal business for twenty-one years.

LEE S. CLYMER, Riegelsville, Pennsylvania, was born in Mt. Laurel, Pennsylvania, April 2, 1863, and has been in the retail coal business for fifteen years.

TIMOTHY COCKILL, President, Treasurer and Manager of the Girard Mammoth Coal Co., Mahanoy City, Pennsylvania, also interested in the Bryson Mt. Coal & Coke Co., Bryson, Kentucky, was born in Lewellyn, Pennsylvania, October 21, 1853, and has been for twenty-six years in bituminous coal mining and ten years in anthracite mining.

GEORGE S. CONNELL, Secretary-Treasurer Pittsmtont Coal Co., Connellsville, Pennsylvania, was born in Waterford, Virginia, December 28, 1885, and has been in the coal business five years. He is also Secretary-Treasurer of the J. J. Buttermore Coal Co. and Vice President of the Catawba Coal Co.

CHESTER P. COOK, Narbeth, Pennsylvania, was born in Baltimore, Maryland, November 6, 1877, and has been in the retail coal business since February 18, 1905.

NATHAN B. CORTRIGHT of N. D. Cortright & Son, Mauch Chunk, Pennsylvania, and President of the Beaver Run Coal Co., was born in Mauch Chunk November 24, 1847, and has been in the operating end of the coal industry for fifty years.

D. W. COX of D. W. Cox & Co., Harrisburg, Pennsylvania, was born in Maryland, and has been in the coal business thirty-two years. Mr. Cox is a Civil War veteran and has served two terms as City Controller of Harrisburg. He is the author of "Cox's Calculated Tonnage Rates."

J. WATSON CRAFT, retail coal merchant of Ambler, Pennsylvania, was born in Gwynedd, Pennsylvania, in 1847, and has been in business at Ambler thirty-three years. Mr. Craft has taken a prominent interest in association and elvic matters.

COAL MEN OF AMERICA

HUGH M. CRANKSHAW, General Manager of the Harwood Coal Co. and Cranberry Creek Coal Co., Hazleton, Pennsylvania, was born in Lancashire, England, in 1883. He was graduated from Victoria University, Manchester, E. Sc., and is also a first class certificated colliery manager. Previously he was with the Mexican Coal & Coke Co., New River Collieries Co. and Lehigh Coal & Navigation Co. He is a member of various mining societies.

HARLEY ASHADEL CRANMER of H. A. Cranmer & Sons, Monroeton, Pennsylvania, was born in Monroeton December 3, 1863, and has been in the coal business for thirty-seven years. A. L. Cranmer & Son was the original company, established in 1873. They were succeeded by Cranmer & Munselman.

JOHN E. DARE, Harrisburg, Pennsylvania, was born in Perry, Pennsylvania, in 1877, and has been in the coal business for fifteen years. He is a Director of the Harrisburg Coal Exchange.

CHARLES G. DE HUFF, Lebanon, Pennsylvania, was born in Lebanon July 28, 1871, and has been eight years in the retail coal business. Previously he was with Case & DeHuff, wholesale coal merchants.

RAYMOND SAMUEL DE LONG, Manager Empire Coal Mining Co., Reading, Pennsylvania, was born in Slatington, Pennsylvania, January 21, 1880, and has been in the coal business for eight years.

MOTT M. DE WOLFE, retail coal merchant of Albion, Pennsylvania, was born in Albion January 4, 1882, and has been engaged in the coal business five years. Mr. DeWolfe was formerly connected with Bancroft & DeWolfe.

AMOS DINKEY, Manager Hilliard, Dinkey & Co., Easton, Pennsylvania, was born in Easton May 8, 1847, and has been in the coal business twenty-eight years. Mr. Dinkey was formerly with the Lehigh Coal & Navigation Co.

ALAN C. DODSON, President Weston Dodson & Co., Bethlehem, Pennsylvania, was born in Bethlehem August 27, 1880, and has been interested in the coal business sixteen years. Mr. Dodson is also interested in the Dodson Coal Co., Charles M. Dodson & Co., Locust Mountain Coal Co., Garrett County Coal & Mining Co., and Monroe Coal Mining Co. He is Secretary of the Anthracite Coal Operators' Association.

E. C. DODSON, with the sales department of the Grazier Coal & Coke Co., Johnstown, Pennsylvania, also interested in the Grazier Coal Mining Co., was born in Snicksburg, Pennsylvania, May 25, 1881, and has been in the coal business about two years.

TRUMAN MONROE DODSON, Bethlehem, Pennsylvania, Vice President and General Manager of the Dodson coal interests, which embrace the Locust Mt. Coal Co., Charles M. Dodson & Co., Monroe Coal Mining Co., Garrett County Coal Mining Co. and Albright Smokeless Coal Co., was born in Bethlehem May 19, 1877, and has been in the coal business eighteen years.

JOHN P. DONOHUE, Vice President and General Manager of the Donohoe Coke Co. and the Potter Coal & Coke Co., Greensburg, Pennsylvania, was born in Greensburg February 12, 1873, and has been in the coal business for twenty-one years. He was previously with the Alexandria Coal Co.

CLAYTON CRESSWELL DOVEY, General Manager of the Valley Smokeless Coal Co., Johnstown, Pennsylvania, President Wilmore Basin Smokeless Coal Co., and Consulting Engineer Ninevah Coal & Coke Co., was born in Shenandoah, Pennsylvania, June 26, 1880, and has been twenty years in the coal business. He was four years with the Pittsburgh-Buffalo Co. and eight years with the M. W. Saxman interests.

W. H. DRUCKEMILLER, Sunbury, Pennsylvania, was born in Sunbury September 28, 1856, and has been in the mining end of the coal business for twenty-five years. He was previously in the firm of Charles W. Nickerson & Co.

CHARLES A. DUNLAP, President of the Hazlewood Coal Co., Phillipsburg, Pennsylvania, also interested in the Meadow Brook Coal Co. and the Burley Coal Co., was born in Houtzdale, Pennsylvania, November 18, 1872, and has been in the coal business for twenty-five years. He was previously with the United Collieries Co. He owned a two-thirds interest in the Raney Coal Co. for several years.

IRWIN PHILLIP EASTMAN, sole owner of the Eastman Coal Co., Lebanon, Pennsylvania, was born in Lebanon November 15, 1871, and has been in the coal business for fifteen years. He began with the Lackawanna Iron & Steel Co. He is a Director of the Pennsylvania Retail Coal Merchants Association, Secretary of the Lebanon Retailers Association, and the Lebanon County Coal Dealers Association.

ALVIN B. EBERLY of Eberly Bros., Ephrata, Pennsylvania, was born in Clay Township, Pennsylvania, May 10, 1872, and has been in the coal business since 1915.

CLEMENT B. EBERLY of Eberly Bros., Ephrata, Pennsylvania, was born in Clay, Pennsylvania, December 31, 1876, and has been in the coal business four years.

WILLIAM B. ECKENROTH, Lebanon, Pennsylvania, was born in Lebanon September 13, 1847, and has been in the retail coal business for forty-nine years.

LEWIS W. EDLER of L. W. Edler & Co., Williamsport, Pennsylvania, also interested in Bennetts Branch Coal Co., was born in Williamsport June 16, 1876, and has been in the retail coal business for eighteen years.

J. S. EDWARDS, retail coal merchant of Bloomsburg, Pennsylvania, was born in Berwick, Pennsylvania, June 30, 1859, and has been in the coal business ten years.

J. A. EICHELBERGER, General Manager (sole surviving partner) of E. Eichelberger & Co., miners, Saxton, Pennsylvania, was born in Saxton May 4, 1872, and has been in the coal business for twenty-five years.

JOHN BRUCE ELLIOTT, General Manager Thermic Coal & Supply Co., also interested in the Thermic Coal & Coke Co., Hollidaysburg, Pennsylvania, was born in Hollidaysburg October 4, 1884. He started in the coal business in 1903, being associated with R. H. Spendley, Altoona, Pennsylvania.

HAROLD BERTELS FELL, Superintendent and Engineer of the Wyoming Valley Water Supply Co., Hazleton, Pennsylvania, was born in Wilkes-Barre, Pennsylvania, August 18, 1889, and has been with the Lehigh Valley Coal Co. ever since his graduation from Princeton University five years ago, first in the mining department until April 1, 1916, and then transferred to look after the water supply.

FRANK FINSTHWAIT, Treasurer Thermal Smokeless Coal Co., Cherry Tree, Pennsylvania, was born in 1878.

THOMAS W. FISHER of the Thomas-Haines Co., Malvern, Pennsylvania, was born in the county of Cork, Ireland, in 1850, and has been in the retail coal business for thirty-four years. He is also interested in another retail coal business in another town.

E. W. FLUK, Williamsburg, Pennsylvania, was born in Wilkes-Barre May 10, 1885, and has been in the retail coal business for six years.

WILLIAM H. FOGELSONGER, Shippensburg, Pennsylvania, was born in Shippensburg May 2, 1869, and has been in the retail coal business for twelve years.

J. FRED FORSEMAN, Williamsport, Pennsylvania, was born in Williamsport November 4, 1876, and has been in the retail coal business six years.

LAWRENCE FOWLER, Manager Citizens Coal Co., Dunmore, Pennsylvania, was born in Honesdale, Pennsylvania, in 1869, and has been in the coal business twenty-one years. He was formerly with the Mount Pleasant Coal Co. and Nay Aug Coal Co.

WILLIAM H. FRITZ, retail coal merchant of Berwyn, Pennsylvania, was born in Berwyn December 21, 1864, and has been in the retail coal business thirty-two years.

HARRY B. GALL of Gall Bros., Lancaster, Pennsylvania, was born in Lancaster July 14, 1875, and has been in the retail coal business for fifteen years.

JAMES H. GALLAGHER, New Alexandria, Pennsylvania, Secretary and Treasurer of the Delmont Gas Coal Co., has been in the coal business for the past ten years.

CHARLES WILLIAM GALLOWAY, Lewisburg, Pennsylvania, was born in Sandsburg, New York, September 3, 1864, and has been in the retail coal business about two years.

S. CARL GARNER, Hatboro, Pennsylvania, was born in Hatboro September 8, 1883, and has been in the coal business for six years.

CHARLES G. GAWTHROP, Manager of the C. G. Gawthrop Co., Kennett Square, Pennsylvania, was born in Pennsylvania January 17, 1864, and has been in the coal business for twenty-nine years. His previous experience was with W. W. & H. H. Gawthrop.

JAMES ALONZO GEALEY, General Manager and Treasurer of the Leesburg Coal Co., New Castle, Pennsylvania, was born in Plain Grove, Pennsylvania, August 23, 1879, and has been in the coal business for nine years. He was previously with the Pennsylvania Fuel Co.

G. J. GEHARDT of the G. J. Gebhardt Coal & Coke Co., Erie, Pennsylvania, has been in the retail coal business thirty-five years.

L. C. GEERMAN, with the firm of D. M. Wertz & Co., Quincy, Pennsylvania, has been in the coal business for twenty years.

JOSEPH C. GERBRON, retail coal merchant of Cheltenham, Pennsylvania, was born in Philadelphia, Pennsylvania, November 17, 1870, and has been in the coal business fifteen years.

WM. H. GIVIN of H. Gawthrop & Co., Kennett Square, Pennsylvania, was born in New Jersey August 26, 1858, and has been in the coal business for forty years, connected with the same firm and predecessors all this period.

L. A. GLESSMAN, retail coal merchant of Conneautville, Pennsylvania, was born in Strongsville, Ohio, May 28, 1874, and has been in the coal business four years.

COAL MEN OF AMERICA

CHARLES G. GOOD, Manager of the Chas. C. Good Co., North Girard, Pennsylvania, was born July 26, 1869, and has been in the retail coal business for five years.

FISK GOODYEAR of Goodyear Bros., Carlisle, Pennsylvania, was born in Carlisle in 1868.

S. M. GOODYEAR of Goodyear Bros., Carlisle, Pennsylvania, was born in Carlisle in 1870 and has been in the coal business twenty-four years.

THOMAS V. GOULD, Secretary Craig-Gould Coal Co., Bristol, Pennsylvania, was born in Dudley, Pennsylvania, December 23, 1870, and has been in the coal business twenty years. Mr. Gould is also interested in the Jaffa Coal Mining Co. and W. A. Gould & Bro. He was previously with the Kettle Creek Coal Mining Co.

JOHN CHARLES GRAHAM of the John C. Graham Coal Co., Butler, Pennsylvania, was born in Butler October 8, 1868, and has been interested in the coal business three years. Mr. Graham is a practicing attorney and also has other interests. He has served as President of the Thin Seam Coal Operators' Association, and successfully waged the fight before the United States Fuel Administration and the Senatorial Investigating Committee that secured a 60-cent differential for Thin Seam operators of Pennsylvania.

H. MALIN GREEN, retail coal merchant of Darby, Pennsylvania, was born at Philadelphia August 27, 1873, and has been in the coal business thirteen years.

JOSEPH J. GRIEBEL, General Manager of Grlebel Bros., Lucinda, Pennsylvania, was born in Lucinda December 24, 1863, and has been in the coal business for over a quarter of a century.

JAMES H. S. GRIESS of James H. S. Griess & Co., Pottstown, Pennsylvania, was born in Pottstown March 28, 1860, and has been in the coal business for twenty-four years. The firm was formerly Miller, Griess & Co., and Miller & Griess.

LOUISE MARIE GROTHIE, York, Pennsylvania, was born in Cleveland, Ohio, July 16, 1871, and has been in the retail coal business for five years.

MILES H. GROVE of J. C. Grove & Son, York, Pennsylvania, was born in Dillsburg, Pennsylvania, February 20, 1889, and has been in the retail coal business for eight years. He has been Secretary of the York Coal Exchange.

JOHN G. HAINES, the oldest member of the Thomas-Haines Co., Malvern, Pennsylvania, was born in Medford, New Jersey, October 20, 1848, and began the coal business in 1883 with Thomas & Haines. He is also interested in another retail coal business in another town.

HARRY HAMILTON, Grove City, Pennsylvania, President and Treasurer of the Standard Coal Mining Co. and Mutual Coal Mining Co., was born in Brookfield, Ohio, in 1862, and has been interested in coal mining for twenty-eight years.

C. C. HAMMOND, General Sales Agent McConnell Coal Co., Dubois, Pennsylvania, was born in Clearfield, Pennsylvania, March 4, 1887, and has been in the coal business six years.

CHRISTIAN K. HARNISH, Lancaster, Pennsylvania, was born in West Lampeter, Pennsylvania, October 3, 1864, and has been in the retail coal business for seven years.

WILLIAM HARRIS, General Manager of James Harris & Sons, miners at Lilly, Pennsylvania, was born in Lilly September 9, 1891, and has been in the coal business for about eight years.

FRANK F. HARRISON, retail coal merchant of Edinboro, Pennsylvania, was born in McGrann, Pennsylvania, January 3, 1879, and has been in the coal business five years.

JOSEPH WHITTIER HARRISON, Superintendent of Big Bend Coal Mining Co., Exposit, Pennsylvania, was born in Mount Savage, Maryland, in 1866.

H. FRANK HARTZEL of F. D. Hartzel's Sons, Chalfont, Pennsylvania, was born in Montgomery County, Pennsylvania, January 9, 1856, and has been in the coal business twenty-seven years.

JAMES M. HARTZEL of F. D. Hartzel's Sons, Chalfont, Pennsylvania, was born in Montgomery County, Pennsylvania, August 23, 1851.

J. M. HARVEY, Superintendent Harvey Coal Co., the Elm Coal Co., and the Bauldorf Coal & Coke Co., Strattonville, Pennsylvania, was born in Scotland September 20, 1873, and has been in the coal business for thirty years.

A. M. HAUBER, Munhall, Pennsylvania, Credit and Office Manager of the Merchants Coal Co. of Pennsylvania, Secretary of the Pennsylvania Smokeless Coal Co. and Treasurer of the Orenda Coal Co., was born in Elizabeth, Pennsylvania, October 10, 1877, and has been in the coal business for sixteen years. He was previously with the United Coal Co. for fifteen years.

ALDEN F. HAYS, Sewickley, Pennsylvania, was born in Pittsburgh, Pennsylvania, June 27, 1850, and has been in the coal business for thirty-six years.

H. SAMUEL HAYS, Manager of the Geo. A. Barnitz Estate, York, Pennsylvania, was born in York August 3, 1868, and has been in the retail coal business for nineteen years. He has been President of the York Coal Exchange and a Director of the Pennsylvania Retail Coal Merchants' Association.

HARRY J. HECK, with the Estate of George J. Heck, Easton, Pennsylvania, was born in Easton March 11, 1879, and has been in the coal business thirty years. He was formerly associated with Jacob Heck, Heck & Bro., and George J. Heck. He is a Director of the Pennsylvania Retail Coal Merchants' Association.

GEORGE D. HEDENBURG of Hedenburg & Son, Milton, Pennsylvania, was born in Danville, Pennsylvania, in 1871, and has been in the coal business for fifteen years. He was formerly with the Philadelphia & Reading Coal & Iron Co.

WADE W. HEGARTY, General Manager S. Hegarty's Sons, Coalport, Pennsylvania, was born in Coalport December 14, 1862. Mr. Hegarty is a graduate of Lafayette College and has been identified with the coal industry twenty-two years, ten years of which he followed mining engineering. He is also interested in West Virginia coal lands.

LLEWELLYN G. HELMAN, retail coal merchant of Allentown, Pennsylvania, was born May 13, 1873, and has been in the coal business for five years.

SAMUEL STEWART HENDERSON, Vice President and Treasurer of the Dilltown Smokeless Coal Co., Brookville, Pennsylvania, was born in Brookville March 8, 1855, and has been in the coal business four years. Mr. Henderson is also interested in coal lands.

C. R. HENRIE, Millville, Pennsylvania, was born in Millville February 2, 1856, and has been in the coal business for about thirty-five years.

GEORGE E. HENRY, Treasurer Marquette Coal Co., East Brady, Pennsylvania, was born in Mahoning, Pennsylvania, July 24, 1856, and has been in the coal business thirty-seven years. He is also interested in the Keystone Mining Co. and was formerly with the Bradys Bend Mining Co. Mr. Henry has served as President of the Allegheny Valley Coal Operators' Association.

THOMAS L. HERB, President of Petty Bros. & Co., Lebanon, Pennsylvania, was born in Pitman, Pennsylvania, July 24, 1893, and has been in the retail coal business for three years.

J. W. G. HERSHEY, Secretary of Hershey, Leaman & Co., Lititz, Pennsylvania, was born in Lititz February 6, 1867, and has been engaged in the coal business for twelve years.

EARL E. HEWITT, Manager Dilltown Smokeless Coal Co., Dilltown, Pennsylvania, was born in Penfield, Pennsylvania, July 22, 1872, and has been in the coal business fourteen years. Mr. Hewitt was formerly with the Buffalo, Rochester & Pittsburgh Coal Co., Morris-Poston Coal Co. and United Coal Co. He served as Secretary of the Coal Mining Institute of America for two years.

WILLIAM D. HILL, Secretary and Treasurer of the Hill Bros. Coal Co., Morrisdale, Pennsylvania, was born in Hazleton, Pennsylvania, November 9, 1883, and has been in the coal business for seventeen years.

CHRISTIAN A. HOFFMAN, Manager of the Hoffman Co., Lewistown, Pennsylvania, was born in Lewistown in 1882. He comes of an old coal family.

SEYMOUR HOOD, retail coal merchant of Cambridge Springs, Pennsylvania, was born near Cambridge Springs in 1868 and has been in the coal business three years.

MILTON HOODMACHER, Throop, Pennsylvania, was born in Mauch Chunk, Pennsylvania, in 1863, and has been engaged in mining coal for thirty-seven years. He has been connected with the Sandy Run Coal Co., Midvalley Coal Co., Susquehanna Coal Co., the Parish Coal Co., and the Moosic Mountain Coal Co.

ROALSTON R. HOOPES, West Chester, Pennsylvania, was born in East Bradford, Pennsylvania, September 27, 1838, and has been in the retail coal business for forty-three years. The present business of Mr. Hoopes was established in 1858 by John G. Robison.

EVAN GARFIELD HOUCK, Manager of the Peoples Coal Co., Shippensburg, Pennsylvania, was born at Broad Top, Pennsylvania, April 20, 1882, and has been in the retail coal business for ten years.

JOHN H. HOY of J. H. Hoy & Son, York, Pennsylvania, was born in Cumberland County, Pennsylvania, August 31, 1854, and has been in the retail coal business nine years.

IRWIN P. HULL, Manager of George Hull & Sons, Hanover, Pennsylvania, also interested in the Casselman River Smokeless Coal Co., was born in Hanover January 30, 1883, and has been in the coal business for twenty-two years. He was previously with the Brodbeck Coal Co.

COAL MEN OF AMERICA

B. F. JAMES, Pottsville, Pennsylvania, was born in Mahanoy City, Pennsylvania, in 1873, and all his industrial life has been passed in the mining of coal. He is interested in the Cambridge Coal Co. and the Shipman Coal Co., Shamokin, Pennsylvania. He was formerly with the Girard Mammoth Coal Co. and the East Bear Ridge Colliery Co.

W. J. JAMES, Pottsville, Pennsylvania, was born in Mahanoy City, Pennsylvania, in 1871, and has devoted his time to the mining of coal. He is interested in the Cambridge Coal Co. and the Shipman Coal Co., Shamokin, Pennsylvania.

ELMER E. JOHNSON, Tullytown, Pennsylvania, was born in Burl County, New Jersey, and has been in the coal business for twenty-six years.

JOHN CRANSTON JOHNSON, Colliery Superintendent Hillside Coal & Iron Co., Avoca, Pennsylvania, was born in Avoca November 26, 1881, and has been in the coal business twenty-seven years. Mr. Johnson was formerly connected with the Pennsylvania Coal Co.

ROBERT JOHNSON, Pittston, Pennsylvania, State Mine Inspector of Pennsylvania, was born in England March 9, 1874, and has been in the coal business for twenty-seven years. He was previously in the employ of the Lehigh Valley Coal Co. and the Lehigh & Wilkes-Barre Coal Co.

GEORGE H. JONES, General Superintendent of the Trevorton Colliery Co., Shamokin, Pennsylvania, was born in Hazleton, Pennsylvania, in 1889, and has been in the coal business for ten years. He was previously with the engineering corps of the Philadelphia & Reading Coal & Iron Co.

JOSEPH E. JONES, Superintendent Banning-Connellsville Coke Co., Banning, Pennsylvania, was born in Gloucester, Ohio, August 20, 1870, and has been engaged in the coal business twenty years. Mr. Jones was previously with W. P. Rend & Co., Continental Coal Co. and Sunday Creek Coal Co.

HARRY MOHTIMER KANARR, Punxsutawney, Pennsylvania, was born near Indiana, Pennsylvania, August 31, 1876. Mr. Kanarr was formerly Chief Engineer for the Rochester & Pittsburgh Coal & Iron Co. and its allied interests.

CHARLES BLAIR KANTNER, Sharpville, Pennsylvania, was born in Altoona, Pennsylvania, September 19, 1861, and has been in the retail coal business for six years.

ROBERT H. KAY, Mine Superintendent of the Colonial Iron Co., also interested in the Octoraro Coal Co., Saxton, Pennsylvania, was born in Cecil County, Maryland, June 24, 1875, and has been in the coal business for twenty-one years. He was previously associated with the Morrisdale Coal Co., Joseph E. Throop, and A. Pardee & Co. He was a member of the Board of Examiners for Mine Inspectors for the bituminous region of Pennsylvania.

ALLEN F. KELLAR, General Outside Foreman for the Pine Hill Coal Co., Minersville, Pennsylvania, was born January 27, 1870, and has been in the coal business for twenty-eight years.

LOUIS R. KENDERDINE of T. S. Kenderdine & Sons, Newtown, Pennsylvania, was born in Lumberton, Pennsylvania, October 14, 1869, and has been in the retail coal business twenty-seven years.

ROBERT KENDERDINE of T. S. Kenderdine & Sons, Newtown, Pennsylvania, was born in Lumberton, Pennsylvania, August 17, 1865, and has been in the retail coal business thirty-one years.

T. S. KENDERDINE of T. S. Kenderdine & Sons, Newtown, Pennsylvania, was born in Lumberton, Pennsylvania, in 1836, and has been in the retail coal business fifty-three years.

SYDNEY R. KEPNER of Sydney R. Kepner & Co., Pottstown, Pennsylvania, was born in Pottstown, Pennsylvania, December 28, 1871, and has been in the retail coal business for seven years.

WILLIAM H. KNEAS, Norristown, Pennsylvania, was born in Norristown August 16, 1859, and has been in the coal business thirty-five years. He has been a Director of the Pennsylvania Retail Coal Merchants' Association since its organization.

JOHN A. KNECHT, Secretary and Manager of the Tub Mill Coal Co., West Salisbury, Pennsylvania, was born in Garrett County, Maryland, in 1871, and has been in the coal business for four years.

WILLIAM RUTER KOCHER, retail coalman of Bloomsburg, Pennsylvania, was born in Pennsylvania July 27, 1853, and has been in the coal business thirty-five years.

GEORGE J. KOEHLER, JR., retail coal merchant of Easton, Pennsylvania, was born in Ebervale, Pennsylvania, December 17, 1870, and has been associated with the coal business twenty-nine years.

JOSIUA T. KREHS of Glen Rock, Pennsylvania, was born in Codorus, Pennsylvania, December 3, 1860, and has been in the coal business for twenty-five years. The firm was formerly Bortner & Krebs.

CHARLES ROBERT KRISE, retail coal merchant of Canton, Pennsylvania, was born in Canton October 23, 1888, and has been in the coal business six years.

F. A. LANE, coal operator, Lane Mills, Pennsylvania, was born in Lane Mills April 14, 1862, and has been in the coal business ten years.

CHESTER JOHN LANGDON, General Manager and Mining Engineer for the mines of John Langdon, Hopewell, Pennsylvania, was born August 10, 1882. For eleven years, since graduation from college, he has been associated with the present firm. He is a member of the Executive Committee of the Association of Bituminous Coal Operators of Central Pennsylvania.

JOHN LANGDON, Huntingdon, Pennsylvania, operating under lease the coal lands of the Chevington & Bunn Coal Co., was born in Minersville, Pennsylvania, May 18, 1856, and has been in the coal business all his life. He was previously with the Crescent Coal Mining Co., the Lambirth Coal Mining Co., Puritan Coal Mining Co., Clearfield Consolidated Coal Co., United Collieries Co., and Zeth, Langdon & Co.

ASA H. LANPHER, Manager of the Meadville Coal & Feed Co., Meadville, Pennsylvania, was born in Wellington, Ohio, March 8, 1861, and has been in the retail coal business for two years.

JOHN E. LATTA, Haverford, Pennsylvania, of Mehl & Latta, Rosemont, Pennsylvania, was born in Philadelphia, and has been in the retail coal business sixteen years.

J. S. LAUGHREY, Manager McDonald & Laughrey, Dawson, Pennsylvania, was born in Dawson in 1872 and has been in the coal business twenty-nine years. He was formerly with Brown & Cochran and the Victoria Coal Co.

NATHANIEL D. LEAMAN, President of Hershey, Leaman & Co., Lititz, Pennsylvania, was born in Neffsville, Pennsylvania, January 17, 1861, and has been engaged in the retail coal business for about eight years.

E. H. LEANING, General Manager Racket Brook Coal Co., Red Oak Coal Co. and Nay Aug Coal Co., Carbondale, Pennsylvania, was born at Cooperstown, New York, December 28, 1882, and has been in the coal business ten years. He was formerly with the Lehigh Valley Coal Co.

WILLIAM C. LEIB, Manager of the Mount Holly Feed & Grain Co., Mount Holly Springs, Pennsylvania, was born in East Berlin, Pennsylvania, March 22, 1872, and has been in the coal business for seventeen years. He was previously with J. N. Hershey & Co., W. C. Leib & Co. and W. C. Leib.

FRANK H. LEISTER, North Wales, Pennsylvania, was born in North Wales in 1872, and has been in the coal business for twenty-seven years.

ALVIN G. LEONARD, Avella, Pennsylvania, Manager and Secretary Duquesne Coal & Coke Co., Pittsburgh, Pennsylvania, was born in Millsboro, Pennsylvania, and has been in the coal business forty-one years. Mr. Leonard was previously connected with the Beaumont Coal Co., A. & J. Leonard, Fort Pitt Coal Co. and Carlton Coal Mining Co.

EUGENE E. LEVIS, retail coal merchant of Coatesville, Pennsylvania, was born in Doe Run, Pennsylvania, February 18, 1863, and has been in the coal business since 1892.

ROBERT B. LEWIS, West Chester, Pennsylvania, was born in Honeybrook, Pennsylvania, October 17, 1864, and has been in the retail coal business for fifteen years. He was in the retail coal business in Ogden, Utah, 1898 to 1911, and at West Chester for two years.

WILLIAM WALLACE L'HOMMEDIEU of Zabriskie & L'Homedieu, Stroudsburg, Pennsylvania, was born in Stroudsburg in 1882, and has been in the retail coal business for fifteen years.

BOAZ G. LIGHT, Lebanon, Pennsylvania, Sales Agent for H. H. Lineaweaver & Co., Philadelphia, was born in Avon, Pennsylvania, in 1887, and has been in the coal business ten years. He was formerly in the retail coal business, having served his apprenticeship with the Consumers Co. in Chicago.

CHARLES S. LING, Secretary and Manager of the Ideal Coal Co., Johnstown, Pennsylvania, also interested in the Sunnyside Coal Co., was born in Bedford, Pennsylvania, August 27, 1870, and has been in the coal business for fifteen years. Previously he was with the Valley Smokeless Coal Co.

HENRY LUCKING, JR., York, Pennsylvania, was born in York August 18, 1860, and has been in the retail coal business for thirty-three years. He has been Treasurer of the York Coal Exchange.

JOHN H. LONG, retail coal merchant of Cleona, Pennsylvania, was born in Cornwall, Pennsylvania, March 22, 1862, and has been interested in the coal business twenty-eight years.

H. H. LYKENS, JR., Martinsburg, Pennsylvania, was born in Fredericksburg, Pennsylvania, May 8, 1886, and has been in the retail coal feed and builders' supply business eight years. He was previously with Skyles, Miller & Co.

COAL MEN OF AMERICA

ROBERT M. MARTIN of C. Martin & Son, Mechanicsburg, Pennsylvania, was born in Mechanicsburg January 29, 1873, and has been in the coal business for twenty years.

W. H. MANBECK of W. H. Manbeck & Co., Mifflin, Pennsylvania, was born in Thompsettown, Pennsylvania, February 15, 1863, and has been in the retail coal business for thirty years. He has been with Manbeck & Nelson, Manbeck, Nelson & Co., and W. H. Manbeck & Son.

J. C. McCREADY, New Castle, Pennsylvania, was born in New Castle October 16, 1862, and has been in the retail coal business for twenty-seven years.

JOSEPH J. McCANN, Cresson, Pennsylvania, General Superintendent Dexter & Carpenter, is a native of Scotland, born June 10, 1862, and has been in the coal business forty-six years.

W. D. McGINNIS, President Connellsville Coal Co. and Connellsville Coal & Coke Co., and Treasurer Connellsville Coke Co., Clark Coal Co., Federal Fuel Co., Old Connellsville Coke Co., and Wick Haven Coal Co., Connellsville, Pennsylvania, was born in Fayette County, Pennsylvania, and has been in the coal business twelve years. Mr. McGinnis is also identified with the Champion Gas Coal Co., Mill Run Coal Co. and Calvin-Essex Coal Co., and is a Director of the First National Bank and Vice President Youghiogheny Trust Co., Connellsville, Pennsylvania.

THOMAS McGLYNN, President of the Yorkshire Coal Co., Madera, Pennsylvania, was born in South Wales December 22, 1853, and has been in the coal business for sixteen years.

FRANK J. McGRAW of John McGraw & Sons, Downingtown, Pennsylvania, was born in St. Marys, Pennsylvania, September 15, 1867, and has been in the retail coal business thirty-four years.

JOHN P. McGRAW of John McGraw & Sons, Downingtown, Pennsylvania, was born in St. Marys, Pennsylvania, February 4, 1866, and has been in the coal business thirty-four years.

LEE McQUISTON of Fredonia, Pennsylvania, was born in Hartstown, Pennsylvania, December 25, 1855, and has been in the coal business for fifteen years.

J. FRANK MEAD, Sayre, Pennsylvania, was born in Athens, Pennsylvania, August 9, 1875, and has been in the retail coal business for two years.

J. HOWARD MEAGER, President Grassy Run Coal Co., Elk Lick, Pennsylvania, was born in Frostburg, Maryland, May 24, 1875, and has been in the coal business twenty-one years. Mr. Meager has other coal interests in West Virginia. He has served as a Director of the Somerset County Coal Association.

THEODORE A. MEHL, Overbrook, Philadelphia, of Mehl & Latta, Rosemont, Pennsylvania, was born in Philadelphia, and has been in the retail coal business sixteen years.

OLIVER H. MEIXEL, Montgomery, Pennsylvania, was born in Jersey Shore November 15, 1860, and has been in the retail coal business for thirteen years.

LEVI M. MELLINGER, retail coal merchant of Denver, Pennsylvania, was born in Denver in 1871 and has been in the coal business eleven years.

WALTER H. MERRICK, General Manager Acme Milling Co., Corry, Pennsylvania, was born in Shamokin, Pennsylvania, April 23, 1877, and has been in the coal business twenty-four years.

CHARLES A. MERRILL, President of the Merrill & Brown Co. of Garrett, Pennsylvania, Vice President and General Manager of the Enterprise Coal Co., and Treasurer and General Manager of the W. A. Merrill & Son Co., was born in Garrett February 27, 1894, and has been in the coal business four years.

W. A. MERRILL, President of the Enterprise Coal Co., W. A. Merrill & Co., W. A. Merrill & Son, Edwena Coal Mining Co., and Romesburg Coal Co., Garrett, Pennsylvania, and holder of 2,000 acres of undeveloped coal land two miles south of Gassaway, West Virginia, was born in Oil City, Pennsylvania, in 1869, and has been in the coal business for twenty-two years. Previously he was connected with the Enterprise Coal Co., the Erie Coal & Coke Co., and the Penn Marva Coal Co.

H. F. MEYER, Towanda, Pennsylvania, was born in Monroeton, Pennsylvania, March 9, 1843, and has been in the coal business for thirty years.

G. FRANK MULLEISEN, Harrisburg, Pennsylvania, was born in Harrisburg February 2, 1861, and has been in the coal business for twenty-one years. For thirteen years he was associated with J. S. Sibley. He was President of the Harrisburg Coal Exchange for about eight years.

GLEN P. MILLER of Miller & Parsons, Corry, Pennsylvania, was born in Wayne, Pennsylvania, April 22, 1877, and has been in the coal business three years.

JOHN H. MILLER, Lewistown, Pennsylvania, was born in Lewistown May 22, 1866, and has been in the retail coal business for three years. He was previously with Miller & Knapp as Superintendent.

NEVIN N. MILLER, Secretary-Treasurer and General Manager of the Tyrone Fuel & Supply Co., Tyrone, Pennsylvania, also interested in mines at Mountindale, Pennsylvania, was born in Martinsburg, Pennsylvania, February 17, 1884, and has been in the coal business for fourteen years. He was previously with Skyles, Miller & Co., Martinsburg, Pennsylvania.

SAMUEL F. MILLER, Mechanicsburg, Pennsylvania, was born in Mechanicsburg September 20, 1856, and has been in the coal business for forty years.

CHARLES H. MILSOM, President and Manager Milsom Coal Co., Carrolltown, Pennsylvania, was born in Brookfield, Ohio, February 21, 1868, and has been in the coal business eighteen years. He was formerly with the Townsend & Milsom Coal Co., Chambers & Milsom Coal Co., Milsom & Hughes Coal Co., and Hancock Coal Co.

JOHN H. MINNIG, Schuylkill Haven, Pennsylvania, was born in Friendsburg in 1846, and has been in the retail coal business for twenty-six years.

FRANK MISSNER, Pottstown, Pennsylvania, was born in Pottstown September 21, 1851, and has been in the retail coal business for thirty years. The firm was formerly F. S. Missner & Son.

J. L. MONTGOMERY, Treasurer Bellefonte Fuel & Supply Co., Bellefonte, Pennsylvania, was born in Bellefonte August 13, 1866, and has been in the coal business twenty-eight years.

GRIFFITH D. MORGAN, General Manager Red Bank Coal Co., East Brady, Pennsylvania, was born in Quemahoning, Pennsylvania, August 20, 1874, and has been in the coal business six years. He was formerly employed at the Monarch mine.

J. A. MORIARTY, retail coal merchant of Columbia, Pennsylvania, was born in Columbia February 5, 1891, and has been in the coal business five years. He was formerly associated with P. Moriarty. He has served as Secretary of the Pennsylvania Retail Coal Merchants' Association.

HORATIO HOWARD MORRIS, Superintendent Lawrence colliery of the Harleigh-Brookwood Coal Co., Frackville, Pennsylvania, was born in Bala, Pennsylvania, September 24, 1889, and has been in the coal business for six years.

JOHN R. MULKIE of the Union Coal & Supply Co., Union City, Pennsylvania, was born in Little Valley, New York, August 15, 1842, and has been engaged in the retail coal business for forty years. He served as agent of the Erie Railroad at Union City for thirty-four years and as a member of the Pennsylvania legislature for four years.

ROY H. MULKIE of the Union Coal & Supply Co., Union City, Pennsylvania, was born in Union City October 7, 1875. By profession he is a civil engineer.

JOHN W. MUMMA, Assistant Manager of the Geo. A. Barnitz Estate, York, Pennsylvania, was born in Lancaster County, Pennsylvania, August 25, 1868, and has been in the retail coal business for fifteen years.

FRANK MUSSELMAN, Starsburg, Pennsylvania, was born in New Danville, Pennsylvania, May 5, 1865, and has been in the coal business for twenty-five years. He was previously with J. C. Walker & Son, Gap, Pennsylvania.

JAMES FRANCIS NEILAN, Saxton, Pennsylvania, General Superintendent of the coal and coke department of Joseph E. Throop and President of the Neilan Coal Co., was born in Hume, New York, August 28, 1885, and has been in the mining end of the coal business eleven years. He has been with the Sunshine Coal & Coke Co., Cambria Fuel Co., Pittsburgh Coal Co., and the Rockhill Iron & Coal Co.

E. H. NEUMEYER of the Saucon Supply Co., South Bethlehem, Pennsylvania, was born in Nazareth, Pennsylvania, February 2, 1876, and has been in the retail coal business four years.

R. E. NEUMEYER of the Saucon Supply Co., South Bethlehem, Pennsylvania, was born in Nazareth, Pennsylvania, February 12, 1867, and has been in the retail coal business four years.

JOHN W. NEWBROUGH, President Rogers Coal Co., Scottsdale, Pennsylvania, was born in Fairmont, West Virginia, August 5, 1881, and has been mining coal four years.

GEORGE H. NICHOLS, retail coal merchant of Clarks Summit, Pennsylvania, was born in Clarks Summit July 23, 1867, and has been in the coal business eleven years. He is President of the Abington National Bank and Vice President of the Abington Electric Light Co.

W. S. NORTH of North & Son, Mifflin, Pennsylvania, was born in Mifflin and has been in the coal business for thirty-seven years.

MAX OPSATNIK, retail coal merchant of Allquippa, Pennsylvania, was born in Hungary December 15, 1879, and has been in the coal business four years. He was formerly connected with Pittsburgh Coal Co. and Whitney & Kemmerer.

COAL MEN OF AMERICA

JOHN H. PANCO, General Foreman of the Harwood Coal Co., Harwood Mine, Pennsylvania, was born in Germany in 1860 and has worked about the coal mines for forty-nine years, starting before he was nine years old as a slate picker. He was previously with Linderman & Skeer.

FRANK W. PARSONS of Miller & Parsons, Corry, Pennsylvania, was born in Concord, Pennsylvania, May 27, 1875, and has been in the coal business three years.

GEORGE B. PASSMORE of H. P. Passmore & Bro., Oxford, Pennsylvania, was born in Oxford, and has been a partner in the retail firm for twenty years.

H. P. PASSMORE of H. P. Passmore & Bro., Oxford, Pennsylvania, was born in Oxford January 22, 1866, and has been engaged in the retail coal business for thirty-two years.

ROBERT JAMES ELLIOTT PEGG, retail coal merchant of Danville, Pennsylvania, was born in Simcoe, Ontario, Canada, December 3, 1848, and had been in the retail coal business thirty-three years when he retired in 1918.

MORRIS P. PENROSE, Phoenixville, Pennsylvania, was born in Nashaminy, Pennsylvania, November 8, 1875, and has been engaged in the retail coal business for ten years.

HARRY PHYTHON, Belle Vernon, Pennsylvania, Mine Inspector of Pennsylvania, is a native of Brookfield, born July 10, 1872, and has been identified with the coal business twenty-five years. Mr. Python was formerly associated with the Pittsburgh-Buffalo Coal Co., Ellsworth Collieries, and Pittsburgh Coal Co.

JAMES H. PIERCE, General Superintendent of the East Bear Ridge Colliery Co., Frackville, Pennsylvania, was born in Frackville September 26, 1887, and has been in the coal business for eight years. He was previously with the Lehigh Valley Coal Co., Consolidation Coal Co., and the Paint Creek Collieries Co.

ROBERT WILLIAM PIERPOINT, Narberth, Pennsylvania, Sales Manager and Secretary of the James Pierpoint & Sons Co. of Philadelphia, was born in Pittsburgh, Pennsylvania, July 17, 1890, and has been engaged in the coal business for five years.

FRED S. PYFER, Secretary and Manager of the B. B. Martin Co., Lancaster, Pennsylvania, was born in Lancaster November 6, 1867, and has been in the retail coal business thirty-five years. He was six years with G. Sener & Sons of Lancaster. He has been a Director of the Pennsylvania Retail Coal Merchants Association for six years and Chairman of the Lancaster County Coal Merchants Association.

JOHN QUINN, Secretary-Treasurer and Manager of Quinn & Co., Houtzdale, Pennsylvania, was born in Scotland July 1, 1858, and has been in the coal business for thirty-five years. He surveyed most of the coal lands in Cambria, Clearfield and Centre counties, Pennsylvania. He was previously with the Freeman-Wilson Coal Co., Moshannon Coal Co. and the Hoversville Coal Co.

THOMAS QUINN, South Bethlehem, Pennsylvania, was born in Ireland, September 16, 1850, and has been in the coal business for twenty-four years.

EARL G. RAKER with P. W. G. Raker, Elizabethville, Pennsylvania, was born in Williamstown, Pennsylvania, June 27, 1894, and has been interested in the coal business five years.

GEORGE A. REIFSNYDER, Norristown, Pennsylvania, a salesman for the Philadelphia & Reading Coal & Iron Co., was born in Pottstown, Pennsylvania, November 14, 1879, and has been engaged in the coal business twenty-three years.

T. MANNING RENTZ, Manager of the Thermic Coal & Supply Co., Hollidaysburg, Pennsylvania, was born in Hollidaysburg February 28, 1897, and has been in the retail coal business for two years.

LAVERNA LEE RICE, retail coal merchant of Carlisle, Pennsylvania, was born in Landisburg, Pennsylvania, March 22, 1884, and has been in the coal business seven years. Mr. Rice is the successor of F. E. Thompson.

P. N. RICH, Manager Standard Coal Co., Altoona, Pennsylvania, was born in Altoona June 10, 1878, and has been in the coal business fifteen years. Mr. Rich was formerly associated with the Cambria Coal Mining Co., Philadelphia, Pennsylvania.

SOL. C. RITCHEY, retail coal merchant of Bedford, Pennsylvania, was born in Bedford January 8, 1854, and has been in the coal business thirty years. Mr. Ritchie was formerly with Harderod & Co.

G. B. ROBERTS, Vanderbilt, Pennsylvania, Treasurer of the Franklin Coal Co., also interested in West Virginia mines, was born in Kirby, Pennsylvania, in 1857, and has been in the coal business for nine years.

CAREL ROBINSON, Manager of the Superior Fuel Co., Russelton, Pennsylvania, was born in Coalburg, West Virginia, in 1881, and has been in the coal mining business for sixteen years. He was previously connected with the New River Co. and the Clinchfield Coal Corp.

GEORGE THOMAS ROBINSON, Secretary and Treasurer of the Operators Coal Mining Co., Vice President and General Manager of the Citizens Coal Co., Secretary of the Dixonville Coal Co. and a Director of the Conemaugh Smokeless Coal Co., Johnstown, Pennsylvania, was born in England February 23, 1868, and has been in the coal business for thirty-seven years. He was formerly with the Cambria Steel Co. as Superintendent of Mines.

C. W. RODGERS of Rodgers & Raub, retailers of Edinburg, Pennsylvania, has been in the coal business thirteen years. He was formerly associated with Ashton & Rodgers.

V. L. ROUSE, Manager of W. P. Rouse & Son, North East, Pennsylvania, was born in Wattsburg, Pennsylvania, December 30, 1884, and has been in the retail coal business for sixteen years.

CHARLES FOSTER ROY, President of the MacGregor Coal Co. and Vice President E. J. Frauenheim Coal Co., Somerset, Pennsylvania, and President Scull Coal Co., was born in Glenroy, Ohio, November 3, 1879, and has been engaged in the coal business fifteen years.

H. R. SACKETT, Manager of the H. R. Sackett Coal & Coke Co., Smithfield, Pennsylvania, was born in New Geneva, Pennsylvania, March 12, 1860, and has been in the coal business eighteen years. He was previously with the Sackett Coke Co., the United Connellsville Coke Co. and the Westmoreland Coke Co., and also promoter, Manager and President of two coal and coke companies.

FRANK G. ST. CLAIR, President and General Manager of the McConnell Coal Co., Dubois, Pennsylvania, was born in Punxsutawney, Pennsylvania, December 3, 1866, and has been in the coal business thirty years. Mr. St. Clair was formerly connected with the Rochester & Pittsburgh Coal & Iron Co., Jefferson & Clearfield Coal & Iron Co., Cowanshannock Coal & Coke Co., Pittsburgh Gas Coal Co. and St. Clair, Rign & Co.

JESSE H. SANFORD, Vice President and General Manager Carnegie Coal Co., Carnegie, Pennsylvania, was born in Vienna, Ohio, December 16, 1861, and has been in the coal business since 1886. Mr. Sanford is also President of the Carnegie Dock & Fuel Co. and the Pittsburgh & Lehigh Dock Co.

CLINTON R. SAVIDGE, President and General Manager of the Mt. Equity Coal & Coke Co., Sunbury, Pennsylvania, was born in Weaverland, Pennsylvania, January 19, 1851, and has been in the coal business for twenty years.

RALPH W. SAVIDGE, Superintendent of the Mt. Equity Coal & Coke Co., Sunbury, Pennsylvania, was born December 16, 1884, and has been connected with the mining end of the coal business for sixteen years.

JV. H. SAYLOR of W. H. Saylor & Son, Pottstown, Pennsylvania, was born in Upper Potts Grove, Pennsylvania, October 10, 1856, and has been in the coal business for thirty years.

CLARENCE M. SCHAEFFER of the Schmuck Co., Hanover, Pennsylvania, was born in Westminster, Maryland, in 1885, and has been in the coal business for ten years.

HARRY S. SCHEIBLER, Secretary-Treasurer and General Manager of the Superior-Connellsville Coke Co. and of the Westmoreland Fayette Coal & Coke Co., Greensburg, Pennsylvania, was born in Greensburg July 27, 1877, and has been in the coal business four years.

S. P. SCHIEK, Owner and Manager of the City Coal Co., Meadville, Pennsylvania, was born in New York City July 30, 1872, and has been in the retail coal business twelve years. He bought his present plant of S. Merrell & Co.

SAMUEL L. SCHIVELY, a retail coal merchant of Jenkintown, Pennsylvania, was born in Jenkintown in 1860.

M. SCHLOSSER, Pittston, Pennsylvania, was born in New York City April 26, 1864, and has been in the coal business for twenty years. He was formerly with the Black Diamond Coal Co. as Secretary.

FRANCIS AIKEN SCHMIDT, Secretary of the Allegheny River Mining Co., Kittanning, Pennsylvania, was born in Washington, D. C., May 30, 1892, and has been in the coal business for seven years.

C. F. SCHROYER, Manager of the Franciscus Co., Lewis-town, Pennsylvania, was born in Milesburg, Pennsylvania, April 16, 1881, and has been in the coal business for twelve years.

CHARLES SCHULTZ, Blossburg, Pennsylvania, President and General Manager Logan Hill Coal Co., was born in Germany April 28, 1865, and has been in the coal business eighteen years. Mr. Schultz was previously connected with the Barney Hill Coal Co. and the Corning-Blossburg Coal Corp.

SOLOMON IRWIN SCHWOYER, junior partner of Schwoyer, Savage & Co., Robesonia, Pennsylvania, was born in Kutztown, Pennsylvania, January 17, 1891, and has been in the retail coal business about four years.

COAL MEN OF AMERICA

W. RALPH SENSENICH, Lancaster, Pennsylvania, was born in Cedar Lane, Pennsylvania, December 21, 1884, and has been in the retail coal business thirteen years, six years in business for himself. The first seven years he was with Esbenshade & Co. and G. H. Shreiner & Son.

I. A. SHAFFER, JR., Secretary, Treasurer and General Manager of Falls Creek Coal Co., Lock Haven, Pennsylvania, was born in Lock Haven March 10, 1868, and has been in the coal business fifteen years.

W. H. SHANK, retail coal merchant of Chambersburg, Pennsylvania, was born in Mont Alto, Pennsylvania, December 20, 1854, and has been in the coal business four years.

OSCAR H. SHAW, Superintendent of the Coalmont Moshannon Coal Co., Houtzdale, Pennsylvania, was born in Shawville May 22, 1864, and has been in the coal business for five years. He was previously with the Red Jacket Coal Mining Co. and the Ajax Consolidated Coal Co.

JAMES G. SHEARIN, Superintendent J. G. Shearn & Son, Canonsburg, Pennsylvania, was born in England in 1855 and has been in the coal business forty years.

SYLVESTER S. SHELLER, retail coal merchant of Duncannon, Pennsylvania, was born in Duncannon in 1854 and has been in the coal business thirty-seven years.

JOSEPH H. SHEPP, Chief Clerk and Assistant Manager of the East Lehigh Colliery Co., Tamaqua, Pennsylvania, was born in Tamaqua in 1881, and has been in the coal business for fifteen years. He comes of a mining family, being the youngest son of D. Shepp, deceased, who was in the coal business for forty years and operated at Summit Hill, Pennsylvania.

GEORGE WEBB SHILLINGFORD, Secretary and Treasurer Empire Coal Mining Co., Clearfield, Pennsylvania, was born in Peale, Pennsylvania, September 13, 1888, and has been in the coal business eight years.

JOSEPH K. SHULTZ, Washington Borough, Pennsylvania, was born in Washington Borough June 19, 1848, and has been in the coal business for forty years. In addition to a retail lumber business he has a 100-acre tobacco plantation, one of the largest in Pennsylvania.

SMEDLEY & MEHL, retail coal and lumber merchants at Ardmore, Pennsylvania, have been in the coal business twenty-six years.

ALEXANDER G. SMITH, President of the Harrison Coal Co., Rosemont, West Virginia, General Manager of the Meyersdale Fuel Co. and the Randolph Coal Co., Meyersdale, Pennsylvania, was born in Scotland March 4, 1871, and has been in the coal business thirty-five years. He was previously with the Consolidation Coal Co., Pennsylvania division, and the Davis Coal & Coke Co., Thomas, West Virginia. He is a Director of the Somerset County Coal Operators Association.

A. M. SMITH, Halifax, Pennsylvania, was born in Falmouth, Pennsylvania, July 16, 1872, and has been associated with others in the coal business at Halifax twenty-three years, and in business for himself ten years.

ANTHONY SMITH of the Boggs Coal Mining Co., Kittanning, Pennsylvania, was born in Strasburg, W. P., in 1865, and has been in the coal business for thirty-five years.

HARRY K. SMITH, Administrator of the Cal. G. Smith Estate, Wrightsville, Pennsylvania, was born in Wrightsville April 7, 1871, and has been in the coal business for five years.

WILLIAM C. SMITH, General Superintendent of the Commercial Coal Mining Co., Expedite, Pennsylvania, was born in Plains, Pennsylvania, January 14, 1879, and has been in the coal business all his life. He was previously with the Pennsylvania Coal & Coke Co., Mitchell Coal & Coke Co., Peerless Coal & Coke Co., and the Columbia Coal Mining Co.

WILLIAM HENRY SMITH, Newport, Pennsylvania, was born in Newport April 11, 1849, and has been in the retail coal business for ten years.

WILLIAM W. SMITH, President Echard Coal & Coke Co., Connellsville, Pennsylvania, was born in Dunbar in 1868 and has been in the coal business twenty-one years. He is also interested in the Etna Connellsville Coke Co.

H. FRANK SNAVELY, Secretary and Manager of the Consumers Ice & Coal Co., Lancaster, Pennsylvania, was born in Lime Valley, Pennsylvania, September 15, 1878, and has been in the coal business for nine years. He started in with his father, F. H. Snavely, first President of the Consumers Ice & Coal Co., who died November 17, 1917.

JOHN W. SNYDER, Huntingdon, Pennsylvania, was born in Huntingdon, September 30, 1850, and has been in the coal business for thirty-four years.

GEORGE M. SPALDING, Wellsboro, Pennsylvania, was born in Troy, Pennsylvania, in 1860, and has been in the retail coal business for twenty-two years.

EDWIN STANTON STACKHOUSE of Bloomsburg, Pennsylvania, General Manager E. S. Stackhouse Coal Co., Shickshinny, Pennsylvania, was born in Shickshinny in 1866 and has been in the coal business ten years.

ELMER H. STAUDT of Staudt & Schwoyer, Pennsburg, Pennsylvania, was born in Kirbyville, Pennsylvania, October 1, 1882, and has been in the coal business for five years.

HENRY K. STAUFFEL, Special Agent for B. Nicoll & Co. at Johnstown, Pennsylvania, was born in Hollidaysburg, Pennsylvania, in 1873, and has been in the coal business for twenty-five years. His previous experience has been with the Allport Coal Mining Co. and the Watkins Coal Co.

J. S. STEVENSON, senior member of the retail firm of Stevenson Bros., Midvale, Pennsylvania, was born in 1876 in Smithsburg, Maryland, and has been in the coal business since June, 1917, when Stevenson Bros. succeeded J. F. Good, who had been in business in Midvale thirty-seven years.

W. H. STEVENSON of the firm of Stevenson Bros., Midvale, Pennsylvania, was born in 1891 in Smithsburg, Maryland. He has been in the coal business since 1917.

HENRY M. STAUFFER, Leola, Pennsylvania, was born in New Holland, Pennsylvania, April 24, 1863, and has been engaged in the retail coal business for twenty-six years. He has one of the most complete retail plants in Eastern Pennsylvania.

GEORGE H. STORY of Geo. H. Story & Co., Chester, Pennsylvania, was born in New Haven, Connecticut, in 1850, and has been in the coal business twenty-one years.

FRED STOVER, General Manager and Treasurer Zenith Coal Co., Butler, Pennsylvania, was born in Emlenton, Pennsylvania, December 2, 1874, and has been in the coal business twenty-six years. Mr. Stover was formerly with the Pickands-Magee Coke Co.

ABRAHAM L. STROUSE, Secretary and Treasurer of the Kerr Coal Co., Freeport, Pennsylvania, was born in Kittanning, Pennsylvania, December 19, 1861, and has been in the coal business for twenty-two years.

CHARLES J. SWARR of Charles J. Swarr & Co., Lancaster, Pennsylvania, was born in Lancaster September 21, 1862, and has been in the retail coal business for thirty-five years.

Albert J. THOMPSON, Wycombe, Pennsylvania, was born in Penns Park, Pennsylvania, September 27, 1873, and has been in the retail coal business for twenty-one years.

C. A. THOMPSON, Mountain Top, Pennsylvania, was born in Foster, Pennsylvania, June 6, 1860, and has been in the retail coal business for twenty-one years.

W. H. THOMPSON, Waynesboro, Pennsylvania, was born in Franklin County, Pennsylvania, September 17, 1862, and has been in the retail coal business for eleven years. He was previously with Thompson & Myers.

ALFRED CHARLES THORPE, retail coal merchant of Chester, Pennsylvania, has been in the coal business eleven years.

DOUGLAS SCOTT THROPP, Earlston, Pennsylvania, General Manager of the coal, coke and iron interests of Joseph Earlston Thropp, was born in Lansdowne, Pennsylvania, in July, 1891, and has been in the coal business since leaving college.

JOSEPH EARLSTON THROPP of Earlston, Pennsylvania, was born in Valley Forge, Pennsylvania, and has been twenty-eight years in the coal business. His great grandfather was the largest coal and iron factor in England in his day.

RAYMOND MEYERS TINGLEY, Herrick Centre, Pennsylvania, was born in Herrick Centre July 21, 1870, and has been interested for twelve years in the coal business. He was formerly with G. S. Tingley and Tingley & Lumley.

H. W. TODD, General Manager and Treasurer of the Lane Coal Co., Philipsburg, Pennsylvania, was born in Philipsburg January 23, 1874, and has been in the coal business for twenty years.

GUYSON PREVOST TROUTMAN, Assistant General Manager of the G. B. Markie Co., Jeddo, Pennsylvania, was born in Centuria, Pennsylvania, in 1880, and has been in the coal business twenty-one years. He was formerly with the Lehigh Valley Coal Co.

THOMAS H. TUDOR, Superintendent Hecla Coal & Coke Co., Brownsville, Pennsylvania, was born in England October 25, 1872, and has been in the coal business thirty-two years. Mr. Tudor was formerly connected with the Keystone Coal & Coke Co. and the Pittsburgh-Westmoreland Coal Co.

HOMER J. TURNER of Turner Bros., Cambridge Springs, Pennsylvania, was born in Cambridge Springs and has been in the coal business six years.

RAY H. TURNER of Turner Bros., Cambridge Springs, Pennsylvania, was born in Cambridge Springs and has been in the coal business six years.

COAL MEN OF AMERICA

WILLIAM RICHARDSON TURNEY, Secretary, Treasurer and General Manager of the Avella Coal Co., also interested in the Pryor Coal Co. and the Station Coal Co., Greensburg, Pennsylvania, was born in Greensburg, September 7, 1859, and has been in the coal business for thirty years. He is by training a mining engineer.

ADDISON H. ULSIL, Millerstown, Pennsylvania, was born in Millerstown November 6, 1852, and has been engaged in the retail coal business thirty-seven years.

LYMAN J. UMSTEAD, retail coal merchant of Birdsboro, Pennsylvania, was born in Birdsboro December 17, 1889, and has been in the coal business nine years.

H. J. VAN DUSEN, President of the Oak Ridge Coal & Coke Co., Hastings, Pennsylvania, has been in the coal business for about twenty-two years.

EDWARD VERO, Millvale, Pennsylvania, was born in Irontale, Ohio, October 21, 1869, and has been in the retail coal business for twenty-five years. He is a member of the Executive Committee of the Pittsburgh Retail Coal Dealers Association.

THEODORE VOGLEY, Owner of the Vogeley Coal Co., Butler, Pennsylvania, was born in Butler June 27, 1867, and has been in the coal business six years.

CHARLES W. WALKER of Wells & Walker, Downingtown, Pennsylvania, was born in Devon December 27, 1867, and has been in the coal business for a quarter of a century.

GEORGE WALKER, retail coal merchant of Chambersburg, Pennsylvania, was born in St. Thomas, Pennsylvania, July 9, 1861, and has been in the coal business fifteen years.

WILLIAM H. WALKER of W. H. Walker & Co., Kennett Square, Pennsylvania, was born in Delaware September 28, 1870, and has been in the coal business for nineteen years. He was formerly with S. C. Walker & Co., Chaddsford Junction, Pennsylvania.

FRANK J. WALLIS, Manager of the Wallis Coal Co., Harrisburg, Pennsylvania, was born in Pennsylvania November 23, 1868, and has been in the coal business since February 10, 1890. He was previously with J. B. Montgomery, Harrisburg. He has been a Director, Vice President and President of the Pennsylvania Retail Coal Merchants' Association.

SAMUEL WALLWORK, General Manager of the Wallwork Coal Co., Summerville, Pennsylvania, was born in England in 1862, and has been in the coal business ten years. He was previously with the Northwestern Mining Exchange Co.

B. FRANK WALTER, retail coal merchant of Christiana, Pennsylvania, was born in Chester County, Pennsylvania, in 1856, and has been in the coal business thirty years.

HARRY H. WEAVER of Fred Weaver & Son, Elizabethville, Pennsylvania, was born in Berrysburg, Pennsylvania, September 13, 1861, and has been in the coal business over thirty years. This firm was established in 1870 by the late Fred Weaver.

GEORGE W. WERTZ, Wernersville, Pennsylvania, was born in Harrisburg, Pennsylvania, February 26, 1836, and has been in the retail coal business for twenty-five years.

JEROME C. WHITE, Assistant Superintendent Penker Coal Co., Portage, Pennsylvania, was born in Sonman, Pennsylvania, July 16, 1896, and has been in the coal business five years. He was previously with the Buffalo, Rochester & Pittsburgh Railway and the Rochester & Pittsburgh Coal & Iron Co.

JOHN L. WHITE, General Superintendent Penker Coal Co., Portage, Pennsylvania, was born in Heckley, Pennsylvania, June 24, 1854, and has been engaged in the coal business forty years. He was previously with the Rochester & Pittsburgh Coal & Iron Co. and the Pittsburgh Terminal Railway & Coal Co.

C. FRANK WILLIAMSON, Media, Pennsylvania, was born in Media, Pennsylvania, February 28, 1861. He started as clerk in 1879 and now has two yards at Media and one at Morton, Pennsylvania. He is a Director and the first Treasurer of the Pennsylvania Retail Coal Merchants' Association.

CHARLES E. WILSON, President Smithfield Coal & Coke Co., Dunbar, Pennsylvania, was born in Pennsylvania and has been in the coal business fourteen years.

E. H. WINSLOW, President of the Ritter & Winslow Co., Punxsutawney, Pennsylvania, also interested in the Summit Coal Mining Co. and the Little Coal Co., was born in Punxsutawney October 10, 1881, and has been in the coal business for twelve years.

HARRY C. WINSLOW, Superintendent of the Williams Coal Co., Punxsutawney, Pennsylvania, was born in Winslow, Pennsylvania, May 24, 1871, and has been in the coal business for seven years. He was formerly President of the Hudson Coal Co.

R. WINTER JR., Royersford, Pennsylvania, was born in Royersford in 1861, and has been the owner of his present business, established in 1865, for twenty years.

C. H. WISSER, McKeesport, Pennsylvania, Treasurer and a Director of the Lake Shore Gas Coal Co. and the Haywood Coal Mining Co., was born in Dravosburg, Pennsylvania, in 1849, and has been active in coal mining thirty-six years. He is also financially interested in the Haywood Coal Mining Co., Shinnston, West Virginia.

F. R. WISSER, Buena Vista, Pennsylvania, Secretary and a Director of the Lake Shore Gas Coal Co. and the Haywood Coal Mining Co., was born in Dravosburg, Pennsylvania, in 1884, and has been engaged in coal mining ten years. He is also financially interested in the Haywood Coal Mining Co., Shinnston, West Virginia.

RALPH A. WOODS, Sharon, Pennsylvania, was born in Clark, Pennsylvania, and has been in the retail coal business for five years.

A. E. WOOLRIDGE, Secretary, Treasurer and General Manager of the Woodland Cannel Coal Co., also interested in the Sterling Coal Mining Co., Woodland, Pennsylvania, was born in Woodland May 17, 1857, and has been in the coal business for twenty-five years.

DANIEL F. WORMAN of the Estate of Thomas Worman, Bath, Pennsylvania, was born in Stewartsville, New Jersey, July 14, 1861, and has been in the coal business twenty years.

A. K. WRIGHT is General Manager of the Peerless Coal Mining Co., Clearfield, Pennsylvania.

JOHN F. WRIGHT, retail coal merchant of Benton, Pennsylvania, is a native of Ireland, born in 1866, and has been in the coal business nine years.

CHARLES P. YEAMANS, retail coal merchant of Bristol, Pennsylvania, was born in Bristol December 15, 1840, and has been in the coal business thirty years.

WILMER W. YOUNG, President and General Manager of the Octoraro Coal Co., Riddlesburg, Pennsylvania, was born in Riddlesburg June 4, 1873, and has been in the operating end of the coal business for twenty-seven years. He was previously with the Keystone Coal Co.

ABRAHAM J. ZABRISKIE, Manager of Zabriskie & L'Hommedieu, Stroudsburg, Pennsylvania, was born in Hackensack, New Jersey, May 7, 1875, and has been in the retail coal business for fifteen years.

W. E. ZIMMERMAN, Superintendent for the Huff Coal Co., Humbert, Pennsylvania, was born in Humbert July 26, 1860, and has been in the coal business thirty years.

ELI Z. ZINN of Zinn Bros., York, Pennsylvania, was born in York March 24, 1871, and has been in the retail coal business eighteen years. The firm was formerly Zinn & Senft. Mr. Zinn is a Director of the Pennsylvania Retail Coal Merchants' Association.